

Datasheet for ABIN7505922
anti-CLEC4A antibody



[Go to Product page](#)

2 Images

Overview

| | |
|--------------|---|
| Quantity: | 0.1 mg |
| Target: | CLEC4A |
| Reactivity: | Human, Non-Human Primate |
| Host: | Mouse |
| Clonality: | Monoclonal |
| Conjugate: | This CLEC4A antibody is un-conjugated |
| Application: | ELISA, Flow Cytometry (FACS), Immunocytochemistry (ICC) |

Product Details

| | |
|---------------|---|
| Purpose: | Anti-Hu CD367 Purified |
| Immunogen: | CD367 ectodomain fused with human Fc |
| Clone: | 9E8 |
| Isotype: | IgG1 kappa |
| Specificity: | The mouse monoclonal antibody 9E8 recognizes an extracellular epitope of human CD367, a type II transmembrane protein of C-lectin family, expressed mainly on antigen presenting cells. |
| Purification: | Purified by protein-A affinity chromatography. |

Target Details

| | |
|-------------------|---|
| Target: | CLEC4A |
| Alternative Name: | CD367 (CLEC4A Products) |

Target Details

Background: C-type lectin domain family 4 member A,CD367 is an approximately 20-28 kDa C-type lectin with immunoreceptor tyrosine-based inhibitory motif (ITIM) in its cytoplasmic part. CD367 binds in calcium-dependent manner to mannose, fucose, and weakly also to N-acetylglucosamine. It is expressed on dendritic cells, macrophages, monocytes, B cells, and neutrophils. In rheumatoid arthritis patients CD367 is expressed also on CD4+ T cells. After ligand-mediated triggering, it is internalized by clathrin-dependent endocytosis and contributes to the antigen presentation to CD8+ T cells. It may also be involved in modulation of the antigen presenting cell response.,DCIR, CLEC4A, LLIR

Gene ID: 50856

UniProt: [Q9UMR7](#)

Application Details

Application Notes: Flow cytometry: Recommended dilution: 1-4 µg/mL

Restrictions: For Research Use only

Handling

Concentration: 1 mg/mL

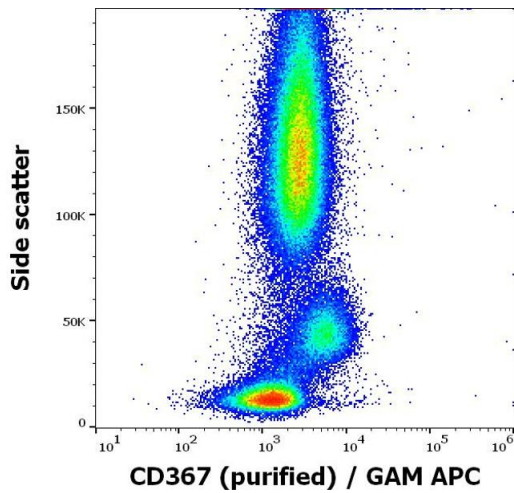
Buffer: Phosphate buffered saline (PBS), pH 7.4, 15 mM sodium azide

Preservative: Sodium azide

Precaution of Use: This product contains Sodium azide: a POISONOUS AND HAZARDOUS SUBSTANCE which should be handled by trained staff only.

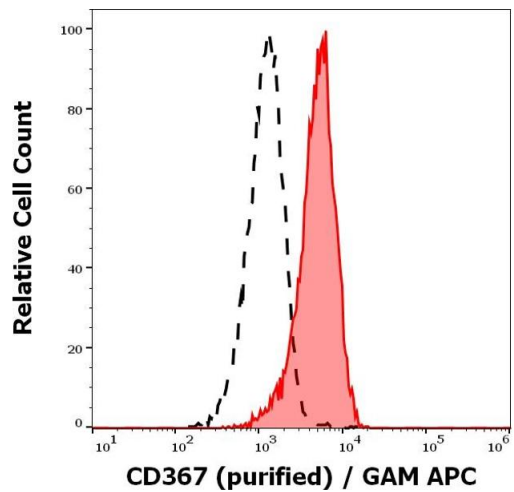
Storage: 4 °C

Storage Comment: Store at 2-8°C. Do not freeze.



Flow Cytometry

Image 1. Flow cytometry surface staining pattern of human peripheral whole blood stained using anti-human CD367 (9E8) purified antibody (concentration in sample 0,6 µg/mL, GAM APC).



Flow Cytometry

Image 2. Separation of human monocytes (red-filled) from human lymphocytes (black-dashed) in flow cytometry analysis (surface staining) stained using anti-human CD367 (9E8) purified antibody (concentration in sample 0,6 µg/mL, GAM APC).