

Datasheet for ABIN7505923
anti-CLEC4A antibody (PE)[Go to Product page](#)

2 Images

Overview

Quantity:	100 tests
Target:	CLEC4A
Reactivity:	Human, Non-Human Primate
Host:	Mouse
Clonality:	Monoclonal
Conjugate:	This CLEC4A antibody is conjugated to PE
Application:	Flow Cytometry (FACS)

Product Details

Purpose:	Anti-Hu CD367 PE
Immunogen:	CD367 ectodomain fused with human Fc
Clone:	9E8
Isotype:	IgG1 kappa
Specificity:	The mouse monoclonal antibody 9E8 recognizes an extracellular epitope of human CD367, a type II transmembrane protein of C-lectin family, expressed mainly on antigen presenting cells.
Purification:	Purified antibody is conjugated with R-phycoerythrin (PE) under optimum conditions. Unconjugated antibody and free fluorochrome are removed by size-exclusion chromatography.

Target Details

Target:	CLEC4A
---------	--------

Target Details

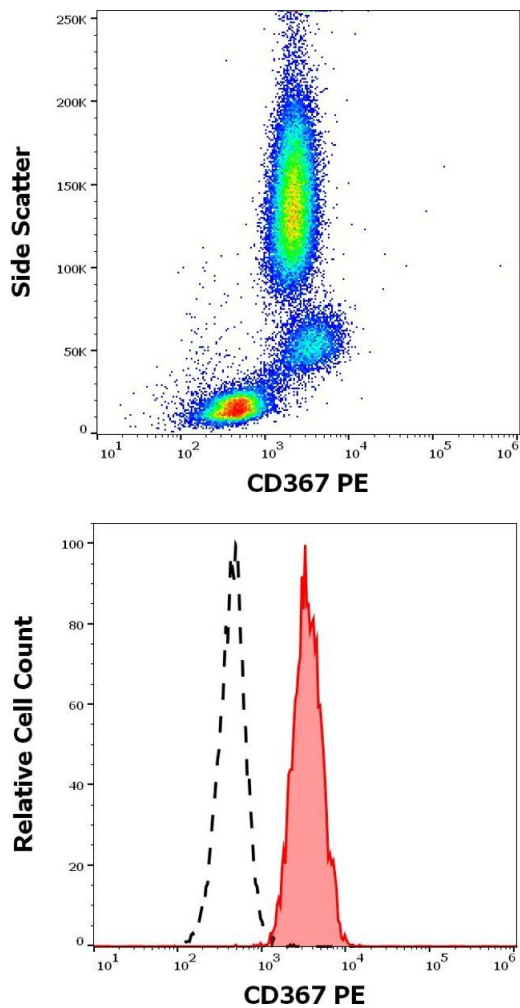
Alternative Name:	CD367 (CLEC4A Products)
Background:	C-type lectin domain family 4 member A,CD367 is an approximately 20-28 kDa C-type lectin with immunoreceptor tyrosine-based inhibitory motif (ITIM) in its cytoplasmic part. CD367 binds in calcium-dependent manner to mannose, fucose, and weakly also to N-acetylglucosamine. It is expressed on dendritic cells, macrophages, monocytes, B cells, and neutrophils. In rheumatoid arthritis patients CD367 is expressed also on CD4+ T cells. After ligand-mediated triggering, it is internalized by clathrin-dependent endocytosis and contributes to the antigen presentation to CD8+ T cells. It may also be involved in modulation of the antigen presenting cell response.,DCIR, CLEC4A, LLIR
Gene ID:	50856
UniProt:	Q9UMR7

Application Details

Application Notes:	Flow cytometry: The reagent is designed for analysis of human blood cells using 10 µL reagent / 100 µL of whole blood or 10 ⁶ cells in a suspension. The content of a vial (1 ml) is sufficient for 100 tests.
Restrictions:	For Research Use only

Handling

Buffer:	Stabilizing phosphate buffered saline (PBS), pH 7.4, 15 mM sodium azide
Preservative:	Sodium azide
Precaution of Use:	This product contains Sodium azide: a POISONOUS AND HAZARDOUS SUBSTANCE which should be handled by trained staff only.
Storage:	4 °C
Storage Comment:	Store at 2-8°C. Protect from prolonged exposure to light. Do not freeze.



Flow Cytometry

Image 1. Flow cytometry surface staining pattern of human peripheral whole blood stained using anti-human CD367 (9E8) PE antibody (10 μ L reagent / 100 μ L of peripheral whole blood).

Flow Cytometry

Image 2. Separation of human monocytes (red-filled) from lymphocytes (black-dashed) in flow cytometry analysis (surface staining) of human peripheral whole blood stained using anti-human CD367 (9E8) PE antibody (10 μ L reagent / 100 μ L of peripheral whole blood).