

Datasheet for ABIN7505928  
**anti-CLEC7A antibody (PE)**[Go to Product page](#)

## 2 Images

## Overview

Quantity:	100 tests
Target:	CLEC7A
Reactivity:	Human
Host:	Mouse
Clonality:	Monoclonal
Conjugate:	This CLEC7A antibody is conjugated to PE
Application:	Flow Cytometry (FACS)

## Product Details

Purpose:	Anti-Hu CD369 PE
Immunogen:	Extracellular part of human CD369 with hIgG FC tag
Clone:	15E2
Isotype:	IgG2a kappa
Specificity:	The mouse monoclonal antibody 15E2 recognizes an extracellular epitope LWEDGSTFSSN of human CD369 (Dectin-1), a 33 kDa transmembrane glycoprotein expressed predominantly on dendritic cells.
Purification:	Purified antibody is conjugated with R-phycoerythrin (PE) under optimum conditions. Unconjugated antibody and free fluorochrome are removed by size-exclusion chromatography.

## Target Details

Target:	CLEC7A
---------	--------

## Target Details

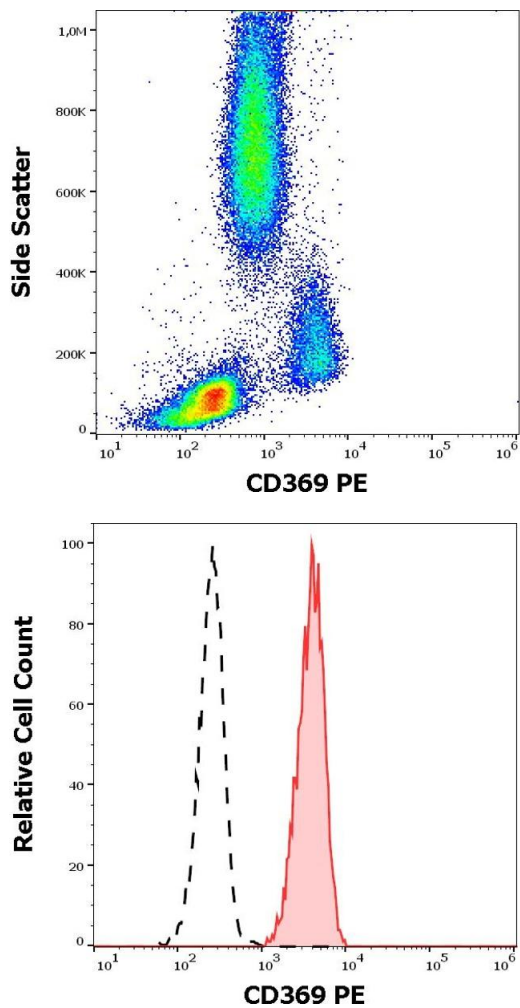
Alternative Name:	CD369 ( <a href="#">CLEC7A Products</a> )
Background:	<p>C-type lectin domain containing 7A,CD369 (dectin-1, beta-glucan receptor) is a 33 kDa type II transmembrane glycoprotein of lectin family, and serves as a part of innate immunity system by binding to beta-glucan polymers, which are typical for yeast and mycobacterial cell walls.</p> <p>CD369 is expressed predominantly on dendritic cells, but it can be detected also on monocytes, macrophages, mast cells, eosinophils, B cells, endothelial cells, and sometimes also on some T cell subsets.,Dectin-1, CLEC7A, BGR, CANDF4, SCARE2</p>
Gene ID:	64581
UniProt:	<a href="#">Q9BXN2</a>
Pathways:	<a href="#">Activation of Innate immune Response</a>

## Application Details

Application Notes:	Flow cytometry: The reagent is designed for analysis of human blood cells using 10 µL reagent / 100 µL of whole blood or 10 <sup>6</sup> cells in a suspension. The content of a vial (1 ml) is sufficient for 100 tests.
Restrictions:	For Research Use only

## Handling

Buffer:	Stabilizing phosphate buffered saline (PBS), pH 7.4, 15 mM sodium azide
Preservative:	Sodium azide
Precaution of Use:	This product contains Sodium azide: a POISONOUS AND HAZARDOUS SUBSTANCE which should be handled by trained staff only.
Storage:	4 °C
Storage Comment:	Store at 2-8°C. Protect from prolonged exposure to light. Do not freeze.



### Flow Cytometry

**Image 1.** Flow cytometry surface staining pattern of human peripheral whole blood stained using anti-human CD369 (15E2) PE antibody (10  $\mu$ L reagent / 100  $\mu$ L of peripheral whole blood).

### Flow Cytometry

**Image 2.** Separation of human monocytes (red-filled) from lymphocytes (black-dashed) in flow cytometry analysis (surface staining) of human peripheral whole blood stained using anti-human CD369 (15E2) PE antibody (10  $\mu$ L reagent / 100  $\mu$ L of peripheral whole blood).