

Datasheet for ABIN7505929

**anti-CD37 antibody**

3 Images

[Go to Product page](#)

## Overview

Quantity:	0.1 mg
Target:	CD37 (TSPAN26)
Reactivity:	Human
Host:	Mouse
Clonality:	Monoclonal
Conjugate:	This CD37 antibody is un-conjugated
Application:	Flow Cytometry (FACS), Immunoprecipitation (IP), Immunohistochemistry (Frozen Sections) (IHC (fro))

## Product Details

Purpose:	Anti-Hu CD37 Purified
Immunogen:	lymphomatous lymph node cells
Clone:	MB-1
Isotype:	IgG1 kappa
Specificity:	The mouse monoclonal antibody MB-1 recognizes an extracellular epitope of CD37, a tetraspanin family transmembrane glycoprotein.
Purification:	Purified by protein-A affinity chromatography.

## Target Details

Target:	CD37 (TSPAN26)
---------	----------------

## Target Details

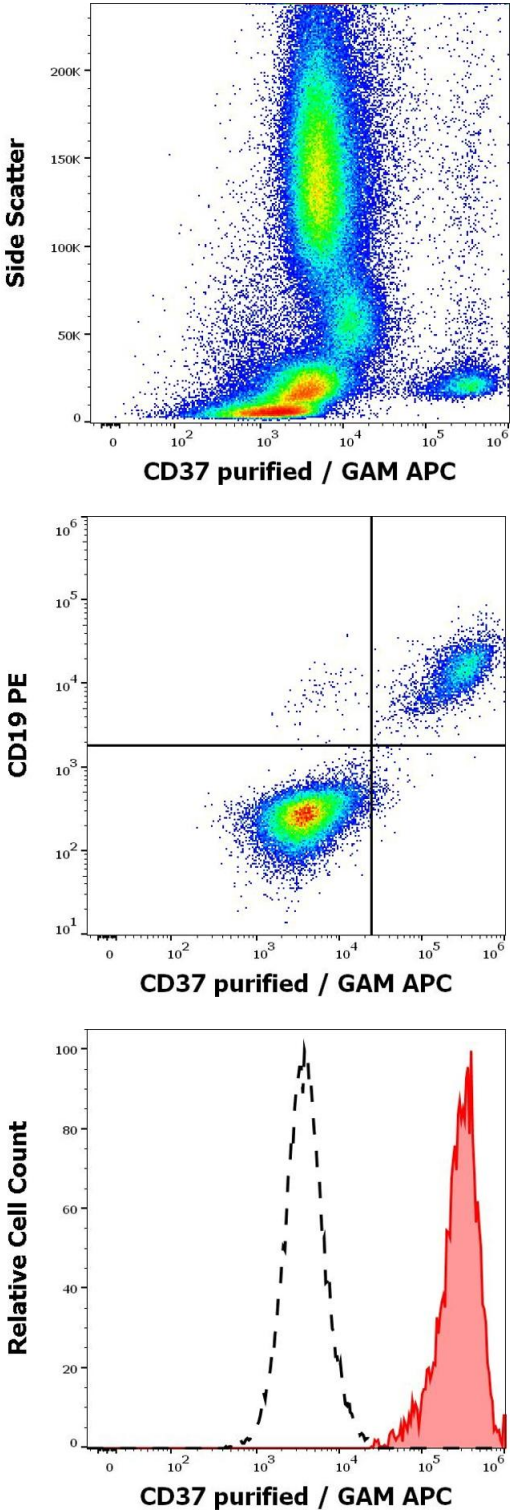
Alternative Name:	CD37 ( <a href="#">TSPAN26 Products</a> )
Background:	CD37 Molecule,CD37 is a 40-64 kDa tetraspanin family glycoprotein, which forms complexes in the B cell membrane with MHC class II, CD53, CD81, and CD82. It is expressed highly on mature B cells and neoplastic B cells, but it is lost on plasma cells, as well as on pro-B cells. Lower expression was detected on monocytes, macrophages, and dendritic cells.,GP52-40, tetraspanin 26
Gene ID:	951
UniProt:	<a href="#">P11049</a>
Pathways:	<a href="#">Positive Regulation of Immune Effector Process</a> , <a href="#">Production of Molecular Mediator of Immune Response</a>

## Application Details

Application Notes:	Flow cytometry: Recommended dilution: 1-4 µg/mL.
Restrictions:	For Research Use only

## Handling

Concentration:	1 mg/mL
Buffer:	Phosphate buffered saline (PBS), pH 7.4, 15 mM sodium azide
Preservative:	Sodium azide
Precaution of Use:	This product contains Sodium azide: a POISONOUS AND HAZARDOUS SUBSTANCE which should be handled by trained staff only.
Storage:	4 °C
Storage Comment:	Store at 2-8°C. Do not freeze.



### Flow Cytometry

**Image 1.** Flow cytometry surface staining pattern of human peripheral whole blood stained using anti-human CD37 (MB-1) purified antibody (concentration in sample 0,2 µg/mL, GAM APC).

### Flow Cytometry

**Image 2.** Flow cytometry multicolor surface staining of human lymphocytes stained using anti-human CD37 (MB-1) purified antibody (concentration in sample 0,2 µg/mL, GAM APC) and anti-human CD19 (LT19) PE antibody (20 µL reagent / 100 µL of peripheral whole blood).

### Flow Cytometry

**Image 3.** Separation of human CD37 positive lymphocytes (red-filled) from human CD37 negative lymphocytes (black-dashed) in flow cytometry analysis (surface staining) of peripheral whole blood stained using anti-human CD37 (MB-1) purified antibody (concentration in sample 0,2 µg/mL, GAM APC).