

Datasheet for ABIN7505932
anti-CD39 antibody (FITC)

2 Images

[Go to Product page](#)

Overview

Quantity:	100 tests
Target:	CD39 (ENTPD1)
Reactivity:	Human
Host:	Mouse
Clonality:	Monoclonal
Conjugate:	This CD39 antibody is conjugated to FITC
Application:	Flow Cytometry (FACS)

Product Details

Purpose:	Anti-Hu CD39 FITC
Clone:	TU66
Isotype:	IgG2b kappa
Specificity:	The mouse monoclonal antibody TU66, also known as Tü66, recognizes an extracellular epitope of CD39, a 78 kDa cell surface enzyme expressed by regulatory T cells, mantle zone B cells, activated T cells, NK cells, macrophages, dendritic cells, neurons, endothelial cells and platelets.
Purification:	Purified antibody is conjugated with fluorescein isothiocyanate (FITC) under optimum conditions and unconjugated antibody and free fluorochrome are removed by size-exclusion chromatography.

Target Details

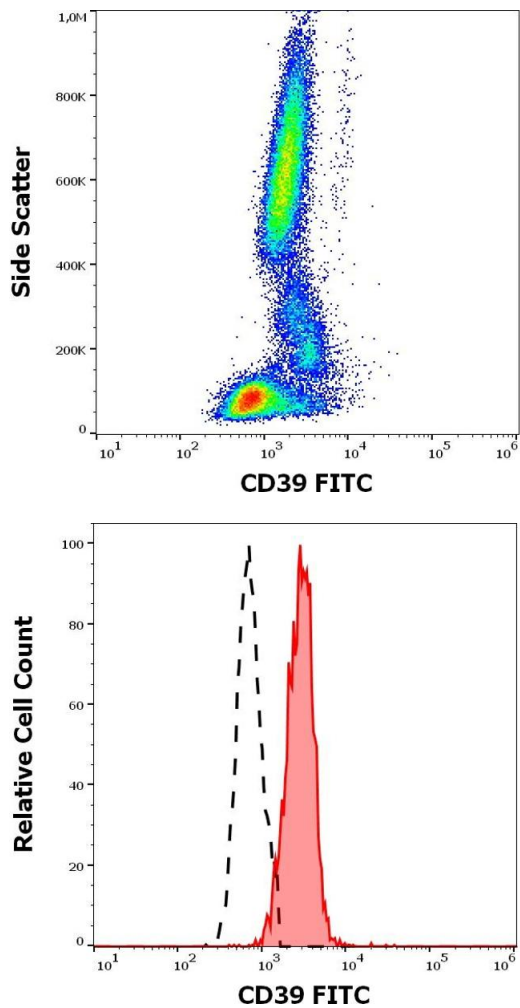
Target:	CD39 (ENTPD1)
Alternative Name:	CD39 (ENTPD1 Products)
Background:	Ectonucleoside triphosphate diphosphohydrolase 1,CD39, also known as ectonucleoside triphosphate diphosphohydrolase 1 (ENTPD1), is a cell surface enzyme (with intracellular N- and C-terminus) which hydrolyzes extracellular ATP and ADP to AMP. Inhibition of its enzymatic activity may confer anticancer benefits. The formation of oligomers in the plasma membrane is essential for enzyme activity. It is expressed on Treg cells, and in other cell types, such as mantle zone B cells, activated T cells, NK cells, macrophages, dendritic cells, neurons, endothelial cells and platelets. Hydrolysis of ATP and ADP inhibits inflammatory and thrombotic responses. In the nervous system, it regulates purinergic neurotransmission.,ETDH1, LCAA, Ecto-ATPase 1, Ecto-apyrase, ENTPD1
Gene ID:	953
UniProt:	P49961

Application Details

Application Notes:	Flow cytometry: The reagent is designed for analysis of human blood cells using 4 µL reagent / 100 µL of whole blood or 10 ⁶ cells in a suspension. The content of a vial (0.4 ml) is sufficient for 100 tests.
Restrictions:	For Research Use only

Handling

Buffer:	Stabilizing phosphate buffered saline (PBS), pH 7.4, 15 mM sodium azide
Preservative:	Sodium azide
Precaution of Use:	This product contains Sodium azide: a POISONOUS AND HAZARDOUS SUBSTANCE which should be handled by trained staff only.
Storage:	4 °C
Storage Comment:	Store at 2-8°C. Protect from prolonged exposure to light. Do not freeze.



Flow Cytometry

Image 1. Flow cytometry surface staining pattern of human peripheral whole blood stained using anti-human CD39 (TU66) FITC antibody (4 μ L reagent / 100 μ L of peripheral whole blood).

Flow Cytometry

Image 2. Separation of human monocytes (red-filled) from CD39 negative lymphocytes (black-dashed) in flow cytometry analysis (surface staining) of human peripheral whole blood stained using anti-human CD39 (TU66) FITC antibody (4 μ L reagent / 100 μ L of peripheral whole blood).