

Datasheet for ABIN7505935
anti-Integrin alpha 1 antibody[Go to Product page](#)

1 Image

Overview

Quantity:	0.1 mg
Target:	Integrin alpha 1 (ITGA1)
Reactivity:	Human, Non-Human Primate
Host:	Mouse
Clonality:	Monoclonal
Conjugate:	This Integrin alpha 1 antibody is un-conjugated
Application:	Flow Cytometry (FACS), Immunoprecipitation (IP), Immunohistochemistry (Frozen Sections) (IHC (fro))

Product Details

Purpose:	Anti-Hu CD49a Purified
Immunogen:	human CTL line
Clone:	TS2-7
Isotype:	IgG1
Specificity:	The mouse monoclonal antibody TS2/7 recognizes an extracellular epitope of CD49a, the alpha 1 chain of VLA integrin complex, that serves as an adhesion receptor for collagen IV and laminin 1.
Purification:	Purified by protein-A affinity chromatography.

Target Details

Target:	Integrin alpha 1 (ITGA1)
---------	--------------------------

Target Details

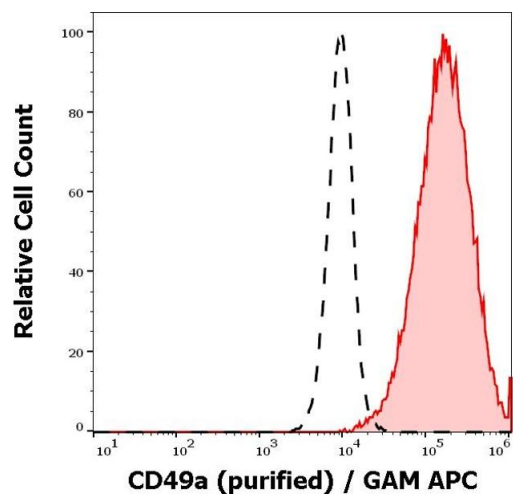
Alternative Name:	CD49a (ITGA1 Products)
Background:	Integrin subunit alpha 1,CD49a is the alpha 1 chain of VLA integrin complex (together with CD29, serving as the beta 1 chain), and is expressed on activated T cells, monocytes, NK cells, cultured neuronal cells, melanoma cells, mesenchymal cells (including smooth muscle cells), fibroblasts, hepatocytes, and microvascular endothelium. It binds to collagen IV and laminin 1. It is important for leukocyte migration into tissues. It is upregulated in inflammatory tissues, such as inflammed intestine.,alpha 1 integrin, VLA-1 alpha, ITGA1
Gene ID:	3672
UniProt:	P56199
Pathways:	EGFR Signaling Pathway , CXCR4-mediated Signaling Events , Signaling of Hepatocyte Growth Factor Receptor , Integrin Complex

Application Details

Application Notes:	Flow cytometry: Recommended dilution: 1-4 µg/mL.
Restrictions:	For Research Use only

Handling

Concentration:	1 mg/mL
Buffer:	Phosphate buffered saline (PBS), pH 7.4, 15 mM sodium azide
Preservative:	Sodium azide
Precaution of Use:	This product contains Sodium azide: a POISONOUS AND HAZARDOUS SUBSTANCE which should be handled by trained staff only.
Storage:	4 °C
Storage Comment:	Store at 2-8°C. Do not freeze.



Flow Cytometry

Image 1. Separation of HeLa cells stained using anti-CD49a (TS2/7) purified antibody (concentration in sample 0,6 $\mu\text{g/mL}$, GAM APC, red-filled) from HeLa cells unstained by primary antibody (GAM APC, black-dashed) in flow cytometry analysis (surface staining).