

Datasheet for ABIN7505936
anti-Integrin alpha 1 antibody (PE)



[Go to Product page](#)

3 Images

Overview

Quantity:	100 tests
Target:	Integrin alpha 1 (ITGA1)
Reactivity:	Human, Non-Human Primate
Host:	Mouse
Clonality:	Monoclonal
Conjugate:	This Integrin alpha 1 antibody is conjugated to PE
Application:	Flow Cytometry (FACS)

Product Details

Purpose:	Anti-Hu CD49a PE
Immunogen:	human CTL line
Clone:	TS2-7
Isotype:	IgG1
Specificity:	The mouse monoclonal antibody TS2/7 recognizes an extracellular epitope of CD49a, the alpha 1 chain of VLA integrin complex, that serves as an adhesion receptor for collagen IV and laminin 1.
Purification:	Purified antibody is conjugated with R-phycoerythrin (PE) under optimum conditions. Unconjugated antibody and free fluorochrome are removed by size-exclusion chromatography.

Target Details

Target:	Integrin alpha 1 (ITGA1)
---------	--------------------------

Target Details

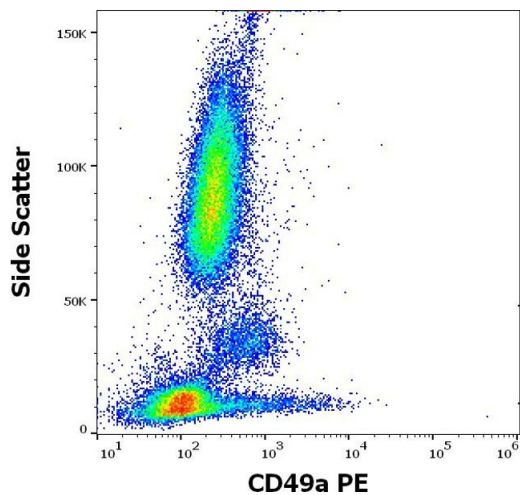
Alternative Name:	CD49a (ITGA1 Products)
Background:	Integrin subunit alpha 1,CD49a is the alpha 1 chain of VLA integrin complex (together with CD29, serving as the beta 1 chain), and is expressed on activated T cells, monocytes, NK cells, cultured neuronal cells, melanoma cells, mesenchymal cells (including smooth muscle cells), fibroblasts, hepatocytes, and microvascular endothelium. It binds to collagen IV and laminin 1. It is important for leukocyte migration into tissues. It is upregulated in inflammatory tissues, such as inflammed intestine.,alpha 1 integrin, VLA-1 alpha, ITGA1
Gene ID:	3672
UniProt:	P56199
Pathways:	EGFR Signaling Pathway , CXCR4-mediated Signaling Events , Signaling of Hepatocyte Growth Factor Receptor , Integrin Complex

Application Details

Application Notes:	Flow cytometry: The reagent is designed for analysis of human blood cells using 10 µL reagent / 100 µL of whole blood or 10 ⁶ cells in a suspension. The content of a vial (1 ml) is sufficient for 100 tests.
Restrictions:	For Research Use only

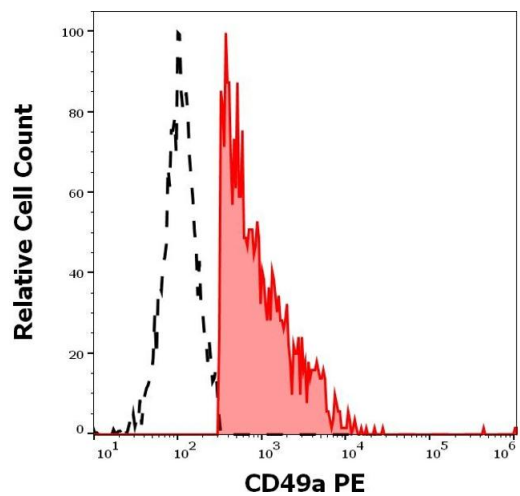
Handling

Buffer:	Stabilizing phosphate buffered saline (PBS), pH 7.4, 15 mM sodium azide
Preservative:	Sodium azide
Precaution of Use:	This product contains Sodium azide: a POISONOUS AND HAZARDOUS SUBSTANCE which should be handled by trained staff only.
Storage:	4 °C
Storage Comment:	Store at 2-8°C. Protect from prolonged exposure to light. Do not freeze.



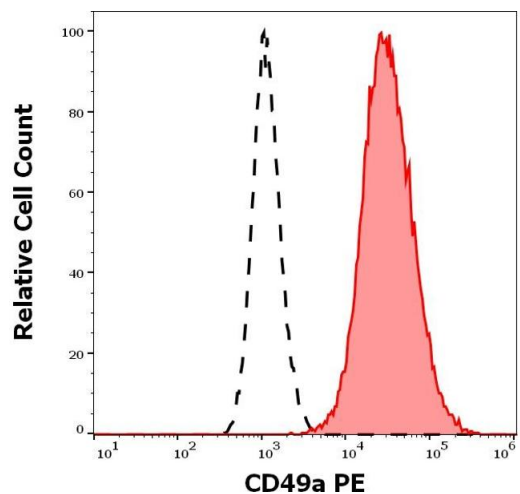
Flow Cytometry

Image 1. Flow cytometry surface staining pattern of human peripheral whole blood stained using anti-human CD49a (TS2/7) PE antibody (10 μ L reagent / 100 μ L of peripheral whole blood).



Flow Cytometry

Image 2. Separation of human CD49a positive lymphocytes (red-filled) from CD49a negative lymphocytes (black-dashed) in flow cytometry analysis (surface staining) of human peripheral whole blood stained using anti-human CD49a (TS2/7) PE antibody (10 μ L reagent / 100 μ L of peripheral whole blood).



Flow Cytometry

Image 3. Separation of HeLa cells stained using anti-human CD49a (TS2/7) PE antibody (10 μ L reagent per million cells in 100 μ L of cell suspension, red-filled) from HeLa cells stained using mouse IgG1 isotype control (MOPC-21) PE antibody (concentration in sample 3 μ g/mL, same as CD49a PE concentration, black-dashed) in flow cytometry analysis (surface staining) of HeLa cell suspension.