

Datasheet for ABIN7505938

**anti-ITGA5 antibody****2** Images[Go to Product page](#)

## Overview

Quantity:	0.1 mg
Target:	ITGA5
Reactivity:	Human, Non-Human Primate
Host:	Mouse
Clonality:	Monoclonal
Conjugate:	This ITGA5 antibody is un-conjugated
Application:	Flow Cytometry (FACS), Immunoprecipitation (IP), Immunohistochemistry (Frozen Sections) (IHC (fro))

## Product Details

Purpose:	Anti-Hu CD49e Purified
Immunogen:	U937 cells
Clone:	SAM1
Isotype:	IgG2b
Specificity:	The mouse monoclonal antibody SAM1 recognizes an extracellular epitope of CD49e (integrin 5 alpha), a transmembrane glycoprotein expressed on thymocytes, early and activated B cells, monocytes, NK cells, dendritic cells, osteoblast and endothelial cells.
Purification:	Purified by protein-A affinity chromatography.

## Target Details

Target:	ITGA5
---------	-------

## Target Details

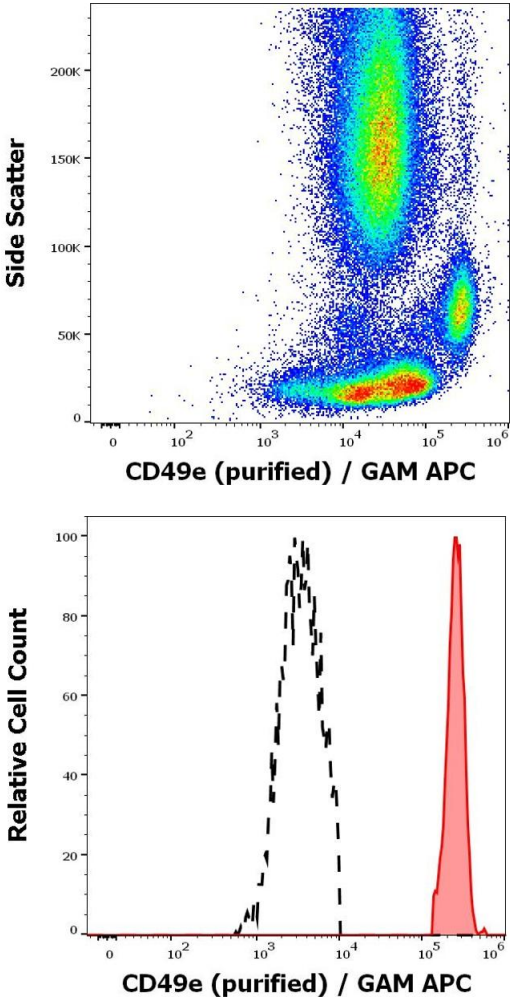
Alternative Name:	CD49e ( <a href="#">ITGA5 Products</a> )
Background:	Integrin subunit alpha 5,CD49e (VLA5 alpha) is a type I transmembrane glycoprotein of the integrin alpha subclass (intergrin 5 alpha), expressed on thymocytes, early and activated B cells, monocytes, NK cells, dendritic cells, osteoblast and endothelial cells. It binds to RGD sequence in fibronectin and to neural adhesion molecule L1. CD49e interactions are important for maintaining the integrity of the endothelial monolayer, as well as it is involved in monocyte migration, T cell costimulation, regulation of cell survival, and other.,VLA5 alpha, integrin 5 alpha, FNRA
Gene ID:	3678
UniProt:	<a href="#">P08648</a>
Pathways:	<a href="#">Integrin Complex</a>

## Application Details

Application Notes:	Flow cytometry: Recommended dilution: 1-4 µg/mL.
Restrictions:	For Research Use only

## Handling

Concentration:	1 mg/mL
Buffer:	Phosphate buffered saline (PBS), pH 7.4, 15 mM sodium azide
Preservative:	Sodium azide
Precaution of Use:	This product contains Sodium azide: a POISONOUS AND HAZARDOUS SUBSTANCE which should be handled by trained staff only.
Storage:	4 °C
Storage Comment:	Store at 2-8°C. Do not freeze.



### Flow Cytometry

**Image 1.** Flow cytometry surface staining pattern of human peripheral whole blood stained using anti-human CD49e (SAM1) purified antibody (concentration in sample 1,7  $\mu$ g/mL, GAM APC).

### Flow Cytometry

**Image 2.** Separation of human CD49e positive monocytes (red-filled) from human CD49e negative lymphocytes (black-dashed) in flow cytometry analysis (surface staining) of peripheral whole blood stained using anti-human CD49e (SAM1) purified antibody (concentration in sample 1,7  $\mu$ g/mL, GAM APC).