

Datasheet for ABIN7505942
anti-CD51/CD61 antibody (PE)[Go to Product page](#)

1 Image

Overview

Quantity:	100 tests
Target:	CD51/CD61 (ITGAV/ITGB3)
Reactivity:	Human, Chicken
Host:	Mouse
Clonality:	Monoclonal
Conjugate:	This CD51/CD61 antibody is conjugated to PE
Application:	Flow Cytometry (FACS)

Product Details

Purpose:	Anti-Hu CD51/CD61 PE
Immunogen:	A cell suspension containing osteoclasts from osteoclastomas
Clone:	23C6
Isotype:	IgG1
Specificity:	The mouse monoclonal antibody 23C6 recognizes an extracellular epitope on CD51/CD61 complex, that is expressed mainly on human osteoclasts, but also e.g. on placenta, or melanoma cell lines. The epitope is native and sensitive to fixation. In chicken this antibody can be used to selectively identify the thrombocytes.
No Cross-Reactivity:	Cow, Pig, Rabbit
Purification:	Purified antibody is conjugated with R-phycoerythrin (PE) under optimum conditions. Unconjugated antibody and free fluorochrome are removed by size-exclusion chromatography.

Target Details

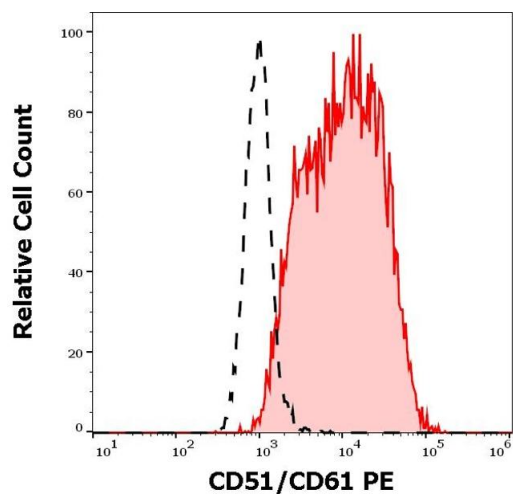
Target:	CD51/CD61 (ITGAV/ITGB3)
Alternative Name:	CD51/CD61 (ITGAV/ITGB3 Products)
Background:	CD51/CD61 (integrin alpha5beta3), also known as osteoclast functional antigen, serves as a vitronectin receptor, and binds also to fibronectin, fibrinogen, thrombospondin, osteopontin, collagen, and von Willebrand factor. Expression of this antigen increases with melanoma progression. In healthy individuals CD51/CD61 is expressed mainly on osteoclasts, placenta, and endothelial cells, at lower levels on platelets and macrophages.,VNRA, MSK8, ITGB3, ITGAV, Integrin alpha5beta3, OFA, VR

Application Details

Application Notes:	Flow cytometry: The reagent is designed for analysis of human blood cells using 10 µL reagent / 100 µL of whole blood or 10 ⁶ cells in a suspension. The content of a vial (1 ml) is sufficient for 100 tests.
Restrictions:	For Research Use only

Handling

Buffer:	Stabilizing phosphate buffered saline (PBS), pH 7.4, 15 mM sodium azide
Preservative:	Sodium azide
Precaution of Use:	This product contains Sodium azide: a POISONOUS AND HAZARDOUS SUBSTANCE which should be handled by trained staff only.
Storage:	4 °C
Storage Comment:	Store at 2-8°C. Protect from prolonged exposure to light. Do not freeze.



Flow Cytometry

Image 1. Separation of REH cells stained using anti-human CD51/CD61 (23C6) PE antibody (10 μ L reagent per million cells in 100 μ L of cell suspension, red-filled) from REH cells stained using mouse IgG1 isotype control (MOPC-21) PE antibody (concentration in sample 7 μ g/mL, same as CD51/CD61 PE concentration, black-dashed) in flow cytometry analysis (surface staining) of REH cell suspension.