



[Go to Product page](#)

Datasheet for ABIN7505945  
**anti-CD52 antibody (FITC)**

2 Images

Overview

Quantity:	100 tests
Target:	CD52
Reactivity:	Human
Host:	Mouse
Clonality:	Monoclonal
Conjugate:	This CD52 antibody is conjugated to FITC
Application:	Flow Cytometry (FACS)

Product Details

Purpose:	Anti-Hu CD52 FITC
Immunogen:	human lymphocytes
Clone:	4C8
Isotype:	IgG3
Specificity:	The mouse monoclonal antibody 4C8 recognizes CD52, a GPI-anchored glycopeptide expressed on the surface of lymphocytes, macrophages, epithelial cells of male reproductive tract, and mature sperms.
Purification:	Purified antibody is conjugated with fluorescein isothiocyanate (FITC) under optimum conditions and unconjugated antibody and free fluorochrome are removed by size-exclusion chromatography.

## Target Details

---

Target:	CD52
Alternative Name:	CD52 ( <a href="#">CD52 Products</a> )
Background:	CD52 Molecule,CD52 (CAMPATH-1, HE5) is a highly glycosylated GPI-anchored 21-28 kDa glycopeptide which is present at high levels on lymphocytes, macrophages, epithelial cells of male reproductive tract and mature sperm. Its 12-amino acid backbone carries a complex N-linked carbohydrate moiety, which differs between sperm and leukocyte CD52, as well as the GPI anchor does. CD52 can be acquired by sperm cells from seminal plasma, where it is released by epithelial cells. Although CD52 is not an essential T-cell costimulator, its triggering results in activation of normal human T cells. CD52 is a very good target for antibody/complement-mediated cell lysis.,CAMPATH-1, HE5, ESPE5
Gene ID:	1043
UniProt:	<a href="#">P31358</a>

## Application Details

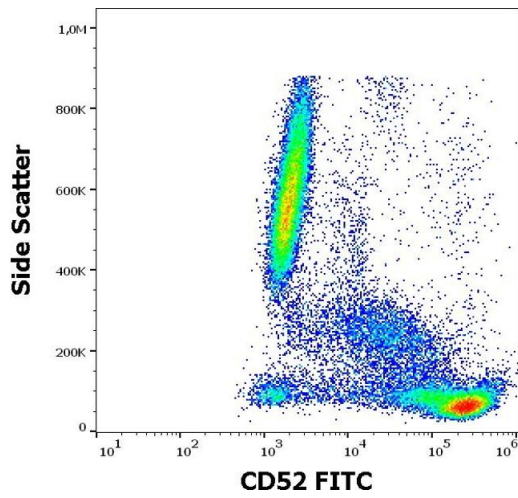
---

Application Notes:	Flow cytometry: The reagent is designed for analysis of human blood cells using 4 µL reagent / 100 µL of whole blood or 10 <sup>6</sup> cells in a suspension. The content of a vial (0.4 ml) is sufficient for 100 tests.
Restrictions:	For Research Use only

## Handling

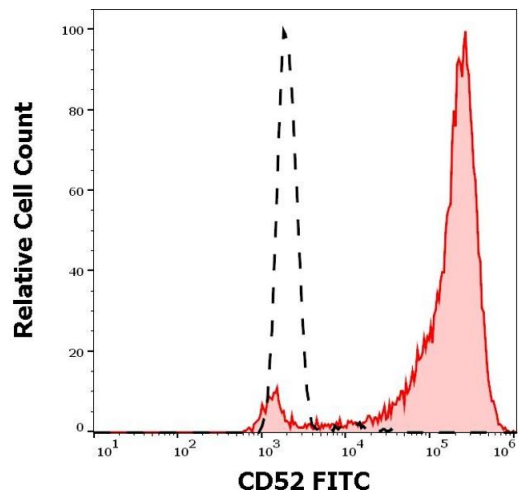
---

Buffer:	Stabilizing phosphate buffered saline (PBS), pH 7.4, 15 mM sodium azide
Preservative:	Sodium azide
Precaution of Use:	This product contains Sodium azide: a POISONOUS AND HAZARDOUS SUBSTANCE which should be handled by trained staff only.
Storage:	4 °C
Storage Comment:	Store at 2-8°C. Protect from prolonged exposure to light. Do not freeze.



### Flow Cytometry

**Image 1.** Flow cytometry surface staining pattern of human peripheral whole blood stained using anti-human CD52 (4C8) FITC antibody (4  $\mu$ L reagent / 100  $\mu$ L of peripheral whole blood).



### Flow Cytometry

**Image 2.** Separation of human lymphocytes (red-filled) from neutrophil granulocytes (black-dashed) in flow cytometry analysis (surface staining) of human peripheral whole blood stained using anti-human CD52 (4C8) FITC antibody (4  $\mu$ L reagent / 100  $\mu$ L of peripheral whole blood).