



Datasheet for ABIN7505948
anti-CEACAM6 antibody (PE)



[Go to Product page](#)

2 Images

Overview

Quantity:	100 tests
Target:	CEACAM6
Reactivity:	Human
Host:	Mouse
Clonality:	Monoclonal
Conjugate:	This CEACAM6 antibody is conjugated to PE
Application:	Flow Cytometry (FACS)

Product Details

Purpose:	Anti-Hu CD66c PE
Immunogen:	Extracts from human breast carcinoma cells
Clone:	B6-2
Isotype:	IgG1 kappa
Specificity:	The mouse monoclonal antibody B6.2 recognizes a conformationally dependent epitope of native CD66c, a GPI-anchored extracellular glycoprotein expressed on granulocytes and epithelial cells.
Purification:	Purified antibody is conjugated with R-phycoerythrin (PE) under optimum conditions. Unconjugated antibody and free fluorochrome are removed by size-exclusion chromatography.

Target Details

Target:	CEACAM6
---------	---------

Target Details

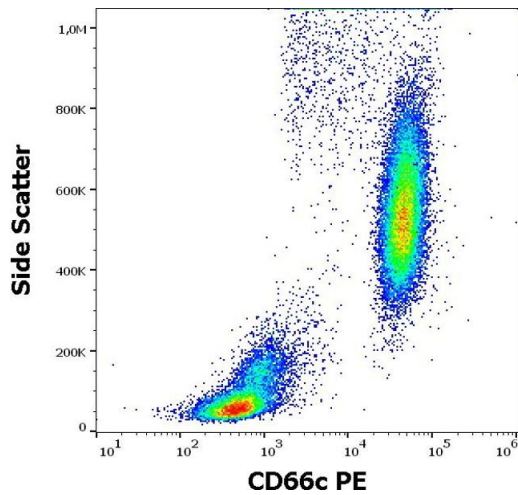
Alternative Name:	CD66c (CEACAM6 Products)
Background:	CEA cell adhesion molecule 6,CD66c is a GPI-anchored glycoprotein capable of homophilic adhesion and heterophilic binding to CD66a-e, CD62E, and galectins. It is expressed on granulocytes and epithelial cells, and has potential applications in the detection of sites of infection and inflammation.,CEAL, NCA, CEACAM6
Gene ID:	4680
UniProt:	P40199

Application Details

Application Notes:	Flow cytometry: The reagent is designed for analysis of human blood cells using 10 µL reagent / 100 µL of whole blood or 10 ⁶ cells in a suspension. The content of a vial (1 ml) is sufficient for 100 tests.
Restrictions:	For Research Use only

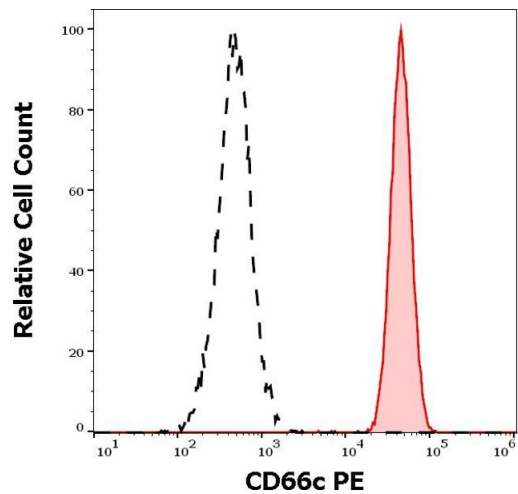
Handling

Buffer:	Stabilizing phosphate buffered saline (PBS), pH 7.4, 15 mM sodium azide
Preservative:	Sodium azide
Precaution of Use:	This product contains Sodium azide: a POISONOUS AND HAZARDOUS SUBSTANCE which should be handled by trained staff only.
Storage:	4 °C
Storage Comment:	Store at 2-8°C. Protect from prolonged exposure to light. Do not freeze.



Flow Cytometry

Image 1. Flow cytometry surface staining pattern of human peripheral whole blood stained using anti-human CD66c (B6.2) PE antibody (10 μ L reagent / 100 μ L of peripheral whole blood).



Flow Cytometry

Image 2. Separation of human neutrophil granulocytes (red-filled) from lymphocytes (black-dashed) in flow cytometry analysis (surface staining) of human peripheral whole blood stained using anti-human CD66c (B6.2) PE antibody (10 μ L reagent / 100 μ L of peripheral whole blood).