

Datasheet for ABIN7505949  
**anti-CD68 antibody (FITC)**



[Go to Product page](#)

2 Images

## Overview

Quantity:	100 tests
Target:	CD68
Reactivity:	Human
Host:	Mouse
Clonality:	Monoclonal
Conjugate:	This CD68 antibody is conjugated to FITC
Application:	Flow Cytometry (FACS)

## Product Details

Purpose:	Anti-Hu CD68 FITC
Immunogen:	Lysosomal contents of lung macrophages
Clone:	Y1-82A
Isotype:	IgG2b
Specificity:	The mouse monoclonal antibody Y1/82A recognizes CD68 (LAMP4), a 110 kDa glycoprotein expressed mainly in cytoplasmic granules of monocytes/macrophages, granulocytes, and dendritic cells.
Purification:	Purified antibody is conjugated with fluorescein isothiocyanate (FITC) under optimum conditions and unconjugated antibody and free fluorochrome are removed by size-exclusion chromatography.

## Target Details

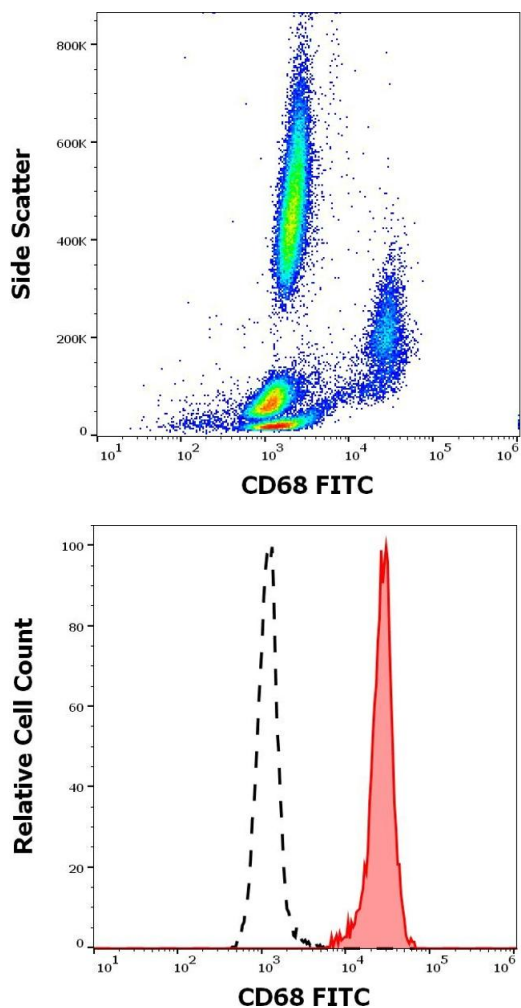
Target:	CD68
Alternative Name:	CD68 ( <a href="#">CD68 Products</a> )
Background:	CD68 Molecule,CD68 (also known as LAMP4 or SCARD1) is a 110 kDa type I transmembrane glycoprotein of the lysosomal/endosomal-associated membrane glycoprotein (LAMP) family and the scavenger receptor family. Although CD68 primarily localizes to lysosomes and endosomes, its fraction circulates to the cell surface. By the heavily glycosylated extracellular domain CD68 binds to tissue- and organ-specific lectins or selectins. It is expressed mainly in cytoplasmic granules of monocytes/macrophages, granulocytes, and dendritic cells, but also e.g. in a proportion of epithelial tumours (diagnosis of poorly differentiated neoplasms), GP110, LAMP4, SCARD1
Gene ID:	968
UniProt:	<a href="#">P34810</a>

## Application Details

Application Notes:	Flow cytometry: The reagent is designed for analysis of human blood cells using 4 µL reagent / 100 µL of whole blood or 10 <sup>6</sup> cells in a suspension. The content of a vial (0.4 ml) is sufficient for 100 tests. Extracellular and intracellular staining.
Restrictions:	For Research Use only

## Handling

Buffer:	Stabilizing phosphate buffered saline (PBS), pH 7.4, 15 mM sodium azide
Preservative:	Sodium azide
Precaution of Use:	This product contains Sodium azide: a POISONOUS AND HAZARDOUS SUBSTANCE which should be handled by trained staff only.
Storage:	4 °C
Storage Comment:	Store at 2-8°C. Protect from prolonged exposure to light. Do not freeze.



### Flow Cytometry

**Image 1.** Flow cytometry intracellular staining pattern of human peripheral whole blood stained using anti-human CD68 (Y1/82A) PE antibody (4  $\mu$ L reagent / 100  $\mu$ L of peripheral whole blood).

### Flow Cytometry

**Image 2.** Separation of human monocytes (red-filled) from lymphocytes (black-dashed) in flow cytometry analysis (intracellular staining) of human peripheral whole blood stained using anti-human CD68 (Y1/82A) PE antibody (4  $\mu$ L reagent / 100  $\mu$ L of peripheral whole blood).