



[Go to Product page](#)

Datasheet for ABIN7505951
anti-ST6GAL1 antibody (FITC)

2 Images

Overview

Quantity:	100 tests
Target:	ST6GAL1
Reactivity:	Human
Host:	Mouse
Clonality:	Monoclonal
Conjugate:	This ST6GAL1 antibody is conjugated to FITC
Application:	Flow Cytometry (FACS)

Product Details

Purpose:	Anti-Hu CD75 FITC
Immunogen:	Stimulated human PBL
Clone:	LN1
Isotype:	IgM kappa
Specificity:	The mouse monoclonal antibody LN1 recognizes CD75, a lactosamine structure present mainly on the surface of B cell types.
Purification:	Purified antibody is conjugated with fluorescein isothiocyanate (FITC) under optimum conditions and unconjugated antibody and free fluorochrome are removed by size-exclusion chromatography.

Target Details

Target:	ST6GAL1
---------	---------

Target Details

Alternative Name: CD75 (ST6GAL1 Products)

Background: CD75 is a lactosamine structure, which is present mainly on the surface of germinal center B cells. With lower level it is present on other mature B cells, and it is downregulated during differentiation to plasma cells. It is a marker which differentiates between malignant B cell types.,lactosamine

Application Details

Application Notes: Flow cytometry: The reagent is designed for analysis of human blood cells using 4 μL reagent / 100 μL of whole blood or 10^6 cells in a suspension. The content of a vial (0.4 ml) is sufficient for 100 tests.

Restrictions: For Research Use only

Handling

Buffer: Stabilizing Tris buffered saline (TBS), pH 8.0, 15 mM sodium azide

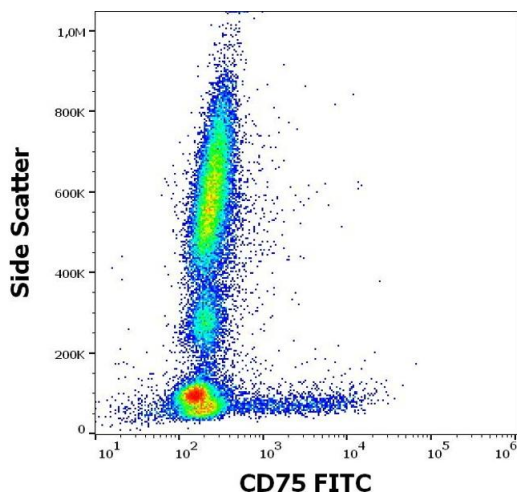
Preservative: Sodium azide

Precaution of Use: This product contains Sodium azide: a POISONOUS AND HAZARDOUS SUBSTANCE which should be handled by trained staff only.

Storage: 4 °C

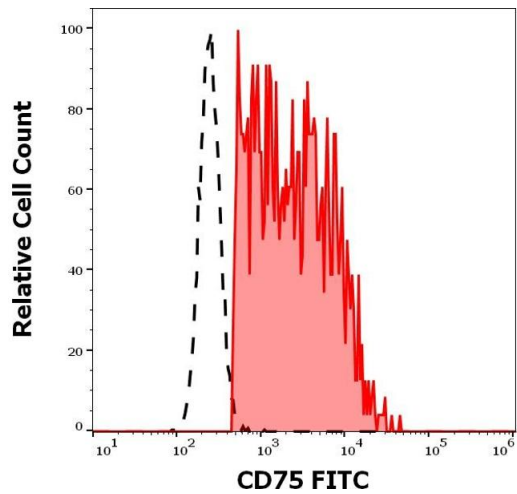
Storage Comment: Store at 2-8°C. Protect from prolonged exposure to light. Do not freeze.

Images



Flow Cytometry

Image 1. Flow cytometry surface staining pattern of human peripheral whole blood stained using anti-human CD75 (LN1) PE antibody (4 μL reagent / 100 μL of peripheral whole blood).



Flow Cytometry

Image 2. Separation of human CD75 positive lymphocytes (red-filled) from neutrophil granulocytes (black-dashed) in flow cytometry analysis (surface staining) of human peripheral whole blood stained using anti-human CD75 (LN1) PE antibody (4 μ L reagent / 100 μ L of peripheral whole blood).