

Datasheet for ABIN7505963

**anti-C5AR1 antibody (AA 15-27) (FITC)****2** Images[Go to Product page](#)

## Overview

Quantity:	100 tests
Target:	C5AR1
Binding Specificity:	AA 15-27
Reactivity:	Human, Cow, Rabbit, Ferret
Host:	Mouse
Clonality:	Monoclonal
Conjugate:	This C5AR1 antibody is conjugated to FITC
Application:	Flow Cytometry (FACS)

## Product Details

Purpose:	Anti-Hu CD88 FITC
Immunogen:	Recombinant N-terminal peptide (Asp15-Asp27) of human C5aR
Clone:	S5-1
Isotype:	IgG2a kappa
Specificity:	The mouse monoclonal antibody S5/1 recognizes an extracellular epitope of CD88 protein, a 43 kDa receptor of C5a component of the complement cascade.
Purification:	Purified antibody is conjugated with fluorescein isothiocyanate (FITC) under optimum conditions and unconjugated antibody and free fluorochrome are removed by size-exclusion chromatography.

## Target Details

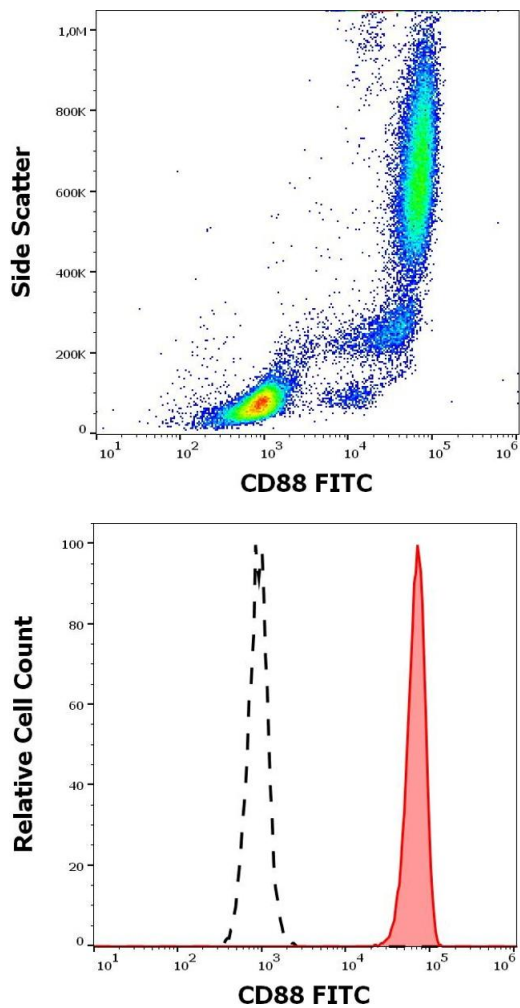
Target:	C5AR1
Alternative Name:	CD88 ( <a href="#">C5AR1 Products</a> )
Background:	Complement C5a receptor 1,CD88 / C5aR is a G protein-coupled seven membrane-spanning protein serving as a receptor for C5a component of the complement cascade, and is expressed mainly by monocytes, macrophages, neutrophils, eosinophils, and mast cells, but also e.g. by hepatocytes, glial cells, vascular endothelial cells, or cardiomyocytes. The binding of C5a to CD88 is associated with inflammatory response, including superoxide anion production, chemotaxis, and increased production of acute phase proteins. Expression of CD88 on synovial mast cells and their C5a-mediated degranulation plays a role in pathogenesis of rheumatoid arthritis.,C5A, C5R1, C5AR1
Gene ID:	728
UniProt:	<a href="#">P21730</a>
Pathways:	<a href="#">Complement System</a>

## Application Details

Application Notes:	Flow cytometry: The reagent is designed for analysis of human blood cells using 4 µL reagent / 100 µL of whole blood or 10 <sup>6</sup> cells in a suspension. The content of a vial (0.4 ml) is sufficient for 100 tests.
Restrictions:	For Research Use only

## Handling

Buffer:	Stabilizing phosphate buffered saline (PBS), pH 7.4, 15 mM sodium azide
Preservative:	Sodium azide
Precaution of Use:	This product contains Sodium azide: a POISONOUS AND HAZARDOUS SUBSTANCE which should be handled by trained staff only.
Storage:	4 °C
Storage Comment:	Store at 2-8°C. Protect from prolonged exposure to light. Do not freeze.



### Flow Cytometry

**Image 1.** Flow cytometry surface staining pattern of human peripheral whole blood stained using anti-human CD88 (S5/1) FITC antibody (4  $\mu$ L reagent / 100  $\mu$ L of peripheral whole blood).

### Flow Cytometry

**Image 2.** Separation of human neutrophil granulocytes (red-filled) from lymphocytes (black-dashed) in flow cytometry analysis (surface staining) of human peripheral whole blood stained using anti-human CD88 (S5/1) FITC antibody (4  $\mu$ L reagent / 100  $\mu$ L of peripheral whole blood).