

Datasheet for ABIN7505984

**anti-IgE antibody (PE)**

3 Images

[Go to Product page](#)

## Overview

Quantity:	0.1 mg
Target:	IgE
Reactivity:	Human
Host:	Mouse
Clonality:	Monoclonal
Conjugate:	This IgE antibody is conjugated to PE
Application:	Flow Cytometry (FACS)

## Product Details

Purpose:	Anti-Hu IgE PE
Immunogen:	Purified human IgE.
Clone:	4H10
Isotype:	IgG1
Specificity:	The mouse monoclonal antibody 4H10 reacts with human IgE, it recognizes an epitope different from the ones recognized by BE5 and 4G7 antibodies to IgE. The epitope is located within the amino acids 267-279 (TWLEDGQVMDVDL).
Purification:	Purified antibody is conjugated with R-phycoerythrin (PE) under optimum conditions. Unconjugated antibody and free fluorochrome are removed by size-exclusion chromatography.

## Target Details

Target:	IgE
---------	-----

## Target Details

Abstract: [IgE Products](#)

**Background:** Immunoglobulin E (IgE) is a 180 kDa soluble protein serving as an antigen-specific unit of mast cell effector mechanisms. IgE has the lowest serum concentration of all immunoglobulins (approximately 0.5 mg/l) in healthy individuals, but upon allergen challenge its concentration in blood increases dramatically. Although biological survival of free IgE is very short ( $T_{1/2} = 2$  days), it is stabilized after binding to its high affinity receptor. Unlike IgM- IgG- and IgA-committed B cells, IgE-switched B cells do not undergo clonal expansion.,Immunoglobulin E

## Application Details

**Application Notes:** Flow cytometry: Recommended dilution: 1-5 µg/mL.

**Restrictions:** For Research Use only

## Handling

**Buffer:** Stabilizing phosphate buffered saline (PBS), pH 7.4, 15 mM sodium azide

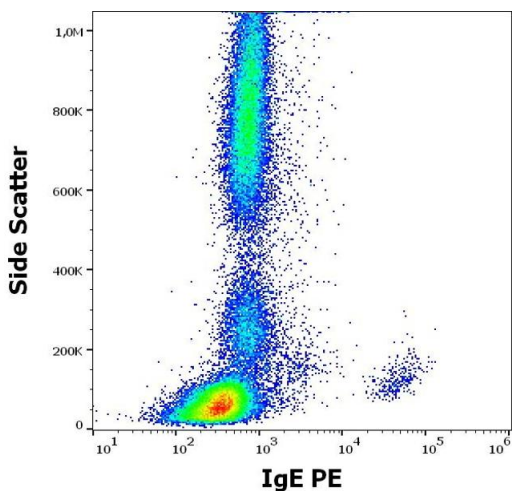
**Preservative:** Sodium azide

**Precaution of Use:** This product contains Sodium azide: a POISONOUS AND HAZARDOUS SUBSTANCE which should be handled by trained staff only.

**Storage:** 4 °C

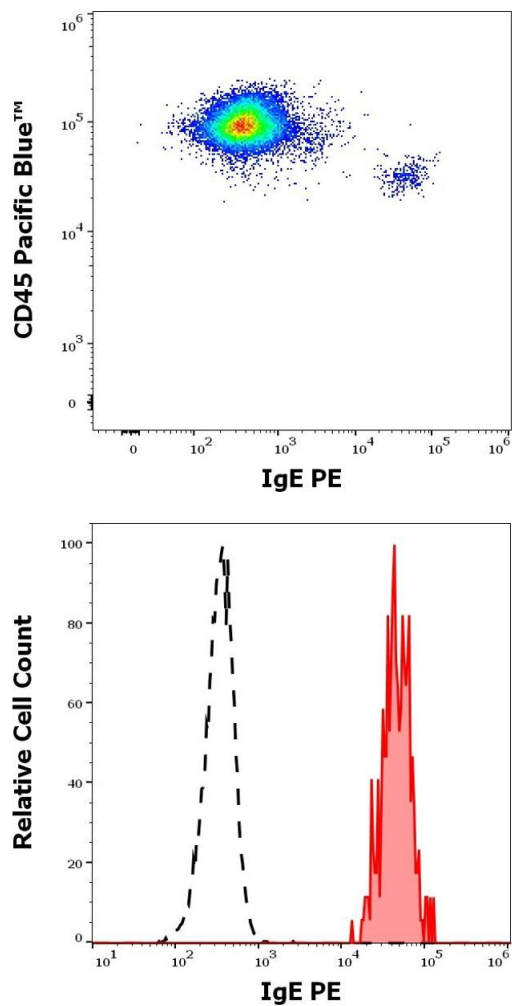
**Storage Comment:** Store at 2-8°C. Protect from prolonged exposure to light. Do not freeze.

## Images



### Flow Cytometry

**Image 1.** Flow cytometry surface staining pattern of human peripheral whole blood stained using anti-human IgE (4H10) PE antibody (concentration in sample 3 µg/mL).



Flow Cytometry

**Image 2.** Flow cytometry multicolor surface staining pattern of human peripheral blood mononuclear cells using anti-human IgE (4H10) PE antibody (concentration in sample 3  $\mu$ g/mL) and anti-human CD45 (MEM-28) Pacific Blue antibody (4  $\mu$ L reagent / 100  $\mu$ L of peripheral whole blood).

Flow Cytometry

**Image 3.** Separation of human basophils (red-filled) from lymphocytes (black-dashed) in flow cytometry analysis (surface staining) of human peripheral whole blood stained using anti-human IgE (4H10) PE antibody (concentration in sample 3  $\mu$ g/mL).