

Datasheet for ABIN7505992

**anti-OLR1 antibody****2** Images[Go to Product page](#)

## Overview

Quantity:	0.1 mg
Target:	OLR1
Reactivity:	Human
Host:	Mouse
Clonality:	Monoclonal
Conjugate:	This OLR1 antibody is un-conjugated
Application:	Immunocytochemistry (ICC), Flow Cytometry (FACS), Immunohistochemistry (Frozen Sections) (IHC (fro))

## Product Details

Purpose:	Anti-Hu LOX1 Purified
Immunogen:	fusion protein of human LOX1 ectodomain and of human IgG Fc
Clone:	15C4
Isotype:	IgG2a kappa
Specificity:	The mouse monoclonal antibody 15C4 recognizes an extracellular epitope of LOX1, a C-type lectin transmembrane protein.
Purification:	Purified by protein-A affinity chromatography.

## Target Details

Target:	OLR1
---------	------

## Target Details

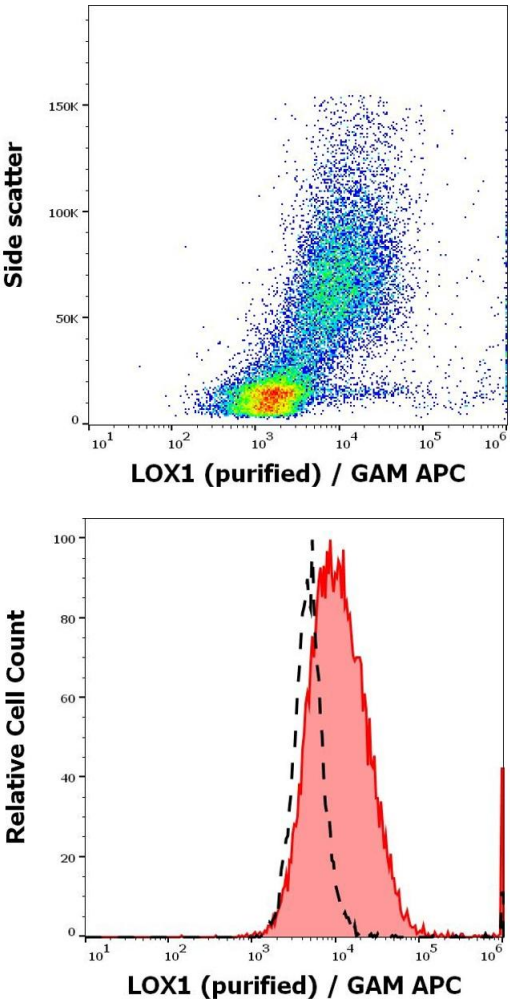
Alternative Name:	LOX1 ( <a href="#">OLR1 Products</a> )
Background:	Oxidized low density lipoprotein receptor 1, LOX1, a 31 kDa type II transmembrane protein, is a C-type lectin, functioning as a scavenger receptor for e.g. oxidized low density lipoprotein, apoptotic heat shock proteins, or CRP. It is expressed by macrophages, fibroblasts, platelets, endothelial cells, and smooth muscle cells, and its defects can lead to atherosclerosis. Its expression is enhanced under inflammatory conditions. Multiple splicing variants have been identified., OLR1, SLOX1, SCARE1, CLEC8A
Gene ID:	4973
UniProt:	<a href="#">P78380</a>

## Application Details

Application Notes:	Flow cytometry: Recommended dilution: 1-5 µg/mL
Restrictions:	For Research Use only

## Handling

Concentration:	1 mg/mL
Buffer:	Phosphate buffered saline (PBS), pH 7.4, 15 mM sodium azide
Preservative:	Sodium azide
Precaution of Use:	This product contains Sodium azide: a POISONOUS AND HAZARDOUS SUBSTANCE which should be handled by trained staff only.
Storage:	4 °C
Storage Comment:	Store at 2-8°C. Do not freeze.



### Flow Cytometry

**Image 1.** Flow cytometry surface staining pattern of human dendritic cells in flow cytometry analysis (surface staining) stained using anti-human LOX1 (15C4) purified antibody (concentration in sample 5 µg/mL, GAM APC).

### Flow Cytometry

**Image 2.** Separation of human dendritic cells (red-filled) from human lymphocytes (black-dashed) in flow cytometry analysis (surface staining) stained using anti-human LOX1 (15C4) purified antibody (concentration in sample 5 µg/mL, GAM APC).