

Datasheet for ABIN7505993
anti-OLR1 antibody (APC)

3 Images

[Go to Product page](#)

Overview

| | |
|--------------|---|
| Quantity: | 100 tests |
| Target: | OLR1 |
| Reactivity: | Human |
| Host: | Mouse |
| Clonality: | Monoclonal |
| Conjugate: | This OLR1 antibody is conjugated to APC |
| Application: | Flow Cytometry (FACS) |

Product Details

| | |
|---------------|---|
| Purpose: | Anti-Hu LOX1 APC |
| Immunogen: | fusion protein of human LOX1 ectodomain and of human IgG Fc |
| Clone: | 15C4 |
| Isotype: | IgG2a kappa |
| Specificity: | The mouse monoclonal antibody 15C4 recognizes an extracellular epitope of LOX1, a C-type lectin transmembrane protein. |
| Purification: | Purified antibody is conjugated with activated allophycocyanin (APC) under optimum conditions and unconjugated antibody and free fluorochrome are removed by size-exclusion chromatography. |

Target Details

| | |
|---------|------|
| Target: | OLR1 |
|---------|------|

Target Details

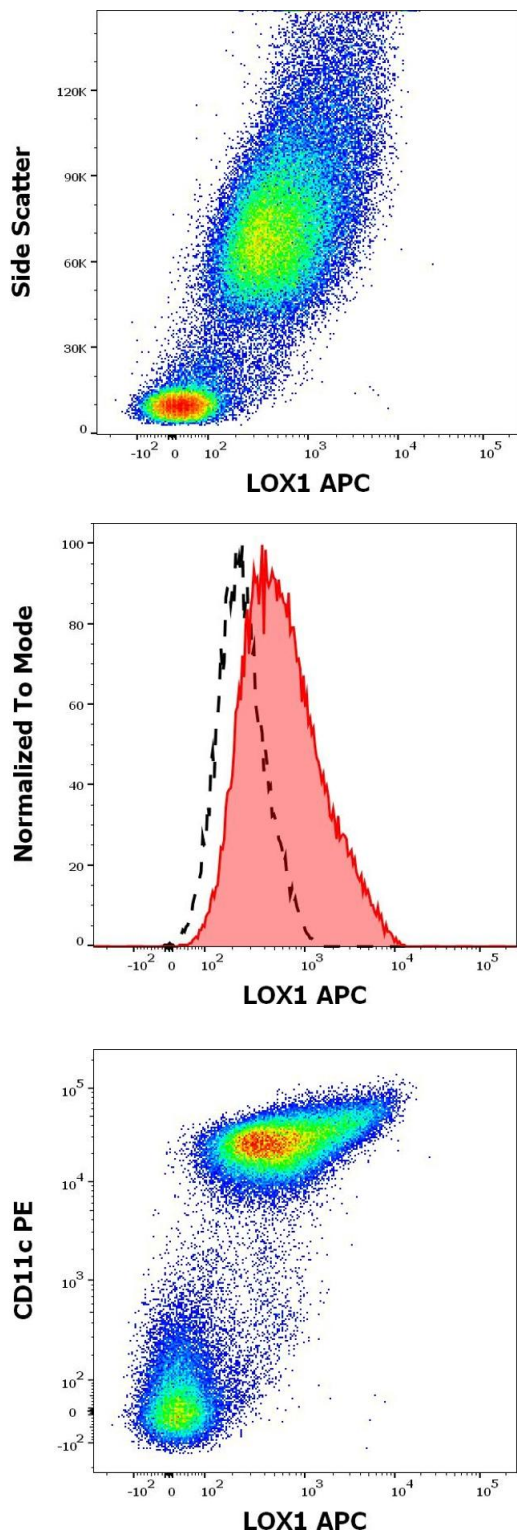
| | |
|-------------------|---|
| Alternative Name: | LOX1 (OLR1 Products) |
| Background: | Oxidized low density lipoprotein receptor 1, LOX1, a 31 kDa type II transmembrane protein, is a C-type lectin, functioning as a scavenger receptor for e.g. oxidized low density lipoprotein, apoptotic heat shock proteins, or CRP. It is expressed by macrophages, fibroblasts, platelets, endothelial cells, and smooth muscle cells, and its defects can lead to atherosclerosis. Its expression is enhanced under inflammatory conditions. Multiple splicing variants have been identified., OLR1, SLOX1, SCARE1, CLEC8A |
| Gene ID: | 4973 |
| UniProt: | P78380 |

Application Details

| | |
|--------------------|---|
| Application Notes: | Flow cytometry: The reagent is designed for analysis of human blood cells using 10 µL reagent / 100 µL of whole blood or 10 ⁶ cells in a suspension. The content of a vial (1 ml) is sufficient for 100 tests. |
| Restrictions: | For Research Use only |

Handling

| | |
|--------------------|--|
| Buffer: | Stabilizing phosphate buffered saline (PBS), pH 7.4, 15 mM sodium azide |
| Preservative: | Sodium azide |
| Precaution of Use: | This product contains Sodium azide: a POISONOUS AND HAZARDOUS SUBSTANCE which should be handled by trained staff only. |
| Storage: | 4 °C |
| Storage Comment: | Store at 2-8°C. Protect from prolonged exposure to light. Do not freeze. |



Flow Cytometry

Image 1. Flow cytometry surface staining pattern of human stimulated (GM-CSF + IL-4) peripheral blood mononuclear cells stained using anti-LOX1 (15C4) APC antibody (10 μ L reagent / 100 μ L of peripheral whole blood).

Flow Cytometry

Image 2. Separation of CD11c positive cells stained using anti-LOX1 (15C4) APC antibody (10 μ L reagent / 100 μ L of peripheral whole blood, red-filled) from CD11c positive cells stained using mouse IgG isotype control (MOPC-21) APC antibody (concentration in sample 1 μ g/mL, same as LOX APC antibody concentration, black-dashed) in flow cytometry analysis (surface staining) of human stimulated (GM-CSF + IL-4) peripheral blood mononuclear cells.

Flow Cytometry

Image 3. Flow cytometry multicolor surface staining pattern of human stimulated (GM-CSF + IL-4) peripheral blood mononuclear cells using anti-LOX1 (15C4) APC antibody (10 μ L reagent / 100 μ L of peripheral whole blood) and anti-human CD11c (BU15) PE antibody (20 μ L reagent / 100 μ L of peripheral whole blood).