

Datasheet for ABIN7505999  
**anti-NG2 antibody (APC)**[Go to Product page](#)

## 1 Image

## Overview

Quantity:	100 tests
Target:	NG2 (MCSP)
Reactivity:	Human
Host:	Mouse
Clonality:	Monoclonal
Conjugate:	This NG2 antibody is conjugated to APC
Application:	Flow Cytometry (FACS)

## Product Details

Purpose:	Anti-NG2 APC
Immunogen:	Human bone marrow stromal cells infected with SV-40
Clone:	7-1
Isotype:	IgG1
Specificity:	The mouse monoclonal antibody 7.1 recognizes an extracellular epitope of NG2, the melanoma-associated chondroitin sulfate proteoglycan 4 of Mw approximately 220-300 kDa.
Purification:	Purified antibody is conjugated with activated allophycocyanin (APC) under optimum conditions and unconjugated antibody and free fluorochrome are removed by size-exclusion chromatography.

## Target Details

Target:	NG2 (MCSP)
---------	------------

## Target Details

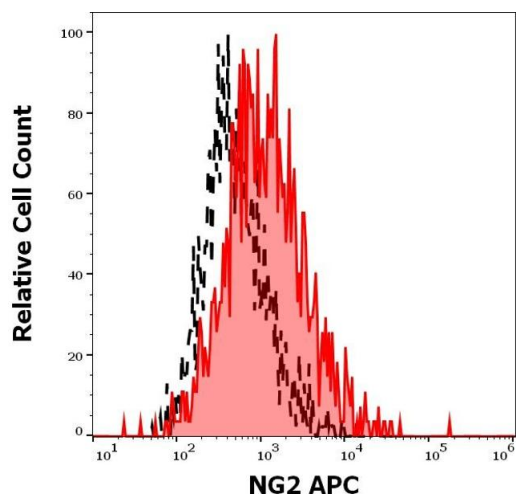
Alternative Name:	NG2 ( <a href="#">MCSP Products</a> )
Background:	Chondroitin sulfate proteoglycan 4,NG2 / chondroitin sulfate proteoglycan 4 is expressed on glial cell populations, but not on normal hepatopoietic cells. It is an integral membrane chondroitin sulfate proteoglycan expressed by human malignant melanoma cells, where it plays role in stabilizing cell-substratum interactions during early events of melanoma cell spreading on endothelial basement membranes, and supports signaling pathways important for tumor invasion and growth. NG2 also serves as an AML blast tumor marker associated with poor prognosis.,Chondroitin sulfate proteoglycan 4, MSK16, CSPG4, MCSP
Gene ID:	1464
UniProt:	<a href="#">Q6UVK1</a>
Pathways:	<a href="#">Glycosaminoglycan Metabolic Process</a>

## Application Details

Application Notes:	Flow cytometry: The reagent is designed for analysis of human blood cells using 10 µL reagent / 100 µL of whole blood or 10 <sup>6</sup> cells in a suspension. The content of a vial (1 ml) is sufficient for 100 tests.
Restrictions:	For Research Use only

## Handling

Buffer:	Stabilizing phosphate buffered saline (PBS), pH 7.4, 15 mM sodium azide
Preservative:	Sodium azide
Precaution of Use:	This product contains Sodium azide: a POISONOUS AND HAZARDOUS SUBSTANCE which should be handled by trained staff only.
Storage:	4 °C
Storage Comment:	Store at 2-8°C. Protect from prolonged exposure to light. Do not freeze.



### Flow Cytometry

**Image 1.** Separation of SK-MEL-30 cells stained using anti-human NG2 (7.1) APC antibody (10  $\mu$ L reagent per million cells in 100  $\mu$ L of cell suspension, red-filled) from SK-MEL-30 cells stained using mouse IgG1 isotype control (MOPC-21) APC antibody (concentration in sample 3  $\mu$ g/mL, same as NG2 APC concentration, black-dashed) in flow cytometry analysis (surface staining) of REH cell suspension.