

Datasheet for ABIN7506011

**anti-SIGLEC8 antibody (Extracellular Domain) (PE)**[Go to Product page](#)**1** Image

## Overview

Quantity:	100 tests
Target:	SIGLEC8
Binding Specificity:	Extracellular Domain
Reactivity:	Human
Host:	Mouse
Clonality:	Monoclonal
Conjugate:	This SIGLEC8 antibody is conjugated to PE
Application:	Flow Cytometry (FACS)

## Product Details

Purpose:	Anti-Hu SIGLEC8 PE
Immunogen:	Extracellular domain of human SIGLEC8 fused with Fc fragment of human IgG1
Clone:	7C9
Isotype:	IgG1
Specificity:	The mouse monoclonal antibody 7C9 recognizes an extracellular epitope of SIGLEC8, an eosinophil marker, expressed e.g. in lymph nodes and spleen.
Purification:	Purified antibody is conjugated with R-phycoerythrin (PE) under optimum conditions. Unconjugated antibody and free fluorochrome are removed by size-exclusion chromatography.

## Target Details

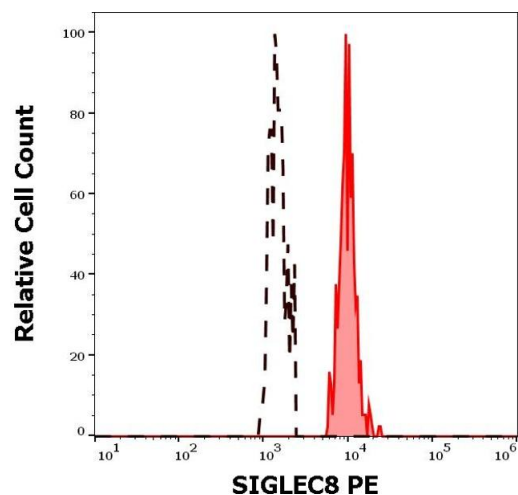
Target:	SIGLEC8
Alternative Name:	SIGLEC8 ( <a href="#">SIGLEC8 Products</a> )
Background:	Sialic acid binding Ig like lectin 8, SIGLEC8 is a sialic acid binding lectin similar to CD33. In its cytoplasmic domain it contains an immunoreceptor tyrosine-based inhibitory motif (ITIM), and a motive similar to a binding site for SLAM-associated protein. SIGLEC8 is expressed e.g. in lymph nodes and spleen. It is an eosinophil marker, although it can be found also on the surface of mast cells. Crosslinking of SIGLEC8 leads to apoptosis. Soluble form of SIGLEC8 can be found in human serum, especially in case of eosinophil-associated diseases., SAF2
Gene ID:	27181
UniProt:	<a href="#">Q9NYZ4</a>

## Application Details

Application Notes:	Flow cytometry: The reagent is designed for analysis of human blood cells using 10 µL reagent / 100 µL of whole blood or 10 <sup>6</sup> cells in a suspension. The content of a vial (1 ml) is sufficient for 100 tests.
Restrictions:	For Research Use only

## Handling

Buffer:	Stabilizing phosphate buffered saline (PBS), pH 7.4, 15 mM sodium azide
Preservative:	Sodium azide
Precaution of Use:	This product contains Sodium azide: a POISONOUS AND HAZARDOUS SUBSTANCE which should be handled by trained staff only.
Storage:	4 °C
Storage Comment:	Store at 2-8°C. Protect from prolonged exposure to light. Do not freeze.



### Flow Cytometry

**Image 1.** Separation of human SIGLEC8 positive eosinophil granulocytes (red-filled) from eosinophil granulocytes (black-dashed) stained using mouse IgG1 isotype control (MOPC-21) PE antibody (concentration in sample 1,7  $\mu$ g/mL, same as SIGLEC8 PE concentration, black-dashed) in flow cytometry analysis (surface staining) of human peripheral whole blood stained using anti-human SIGLEC8 (7C9) APC antibody (10  $\mu$ L reagent / 100  $\mu$ L of peripheral whole blood).