



[Go to Product page](#)

Datasheet for ABIN7506014

anti-TCR gamma/delta antibody (APC)

3 Images

Overview

Quantity:	100 tests
Target:	TCR gamma/delta
Reactivity:	Human
Host:	Mouse
Clonality:	Monoclonal
Conjugate:	This TCR gamma/delta antibody is conjugated to APC
Application:	Flow Cytometry (FACS)

Product Details

Purpose:	Anti-Hu TCR gamma/delta APC
Immunogen:	Purified CD3 antigen complex
Clone:	11F2
Isotype:	IgG1
Specificity:	The mouse monoclonal antibody 11F2 recognizes an extracellular epitope in all molecular forms of the TCR gamma/delta.
Purification:	Purified antibody is conjugated with activated allophycocyanin (APC) under optimum conditions and unconjugated antibody and free fluorochrome are removed by size-exclusion chromatography.
Endotoxin Level:	Low Endotoxin

Target Details

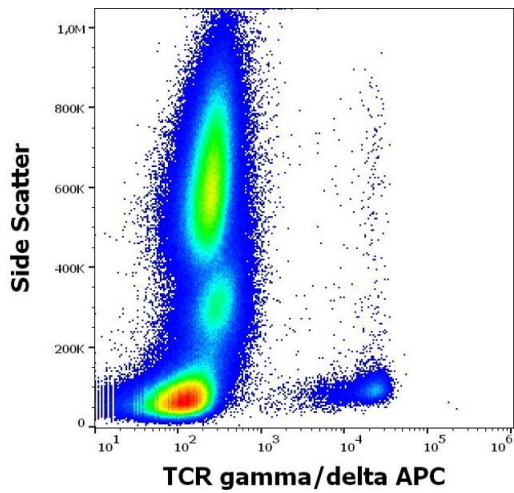
Target:	TCR gamma/delta
Alternative Name:	TCR gamma/delta (TCR gamma/delta Products)
Background:	The antigen-specific T cell receptor (TCR) is composed of either alpha and beta subunit, or gamma and delta subunit. Majority of T cells present in the blood, lymph and secondary lymphoid organs express TCR alpha/beta heterodimers, whereas the T cells expressing TCR gamma/delta heterodimers are localized mainly in epithelial tissues and at the sites of infection. The subunits of TCR heterodimers are covalently bonded and in the endoplasmic reticulum they associate with CD3 subunits to form functional TCR-CD3 complex. Lack of expression of any of the chains is sufficient to stop cell surface expression.,TCRG/D

Application Details

Application Notes:	Flow cytometry: The reagent is designed for analysis of human blood cells using 10 µL reagent / 100 µL of whole blood or 10 ⁶ cells in a suspension. The content of a vial (1 ml) is sufficient for 100 tests.
Restrictions:	For Research Use only

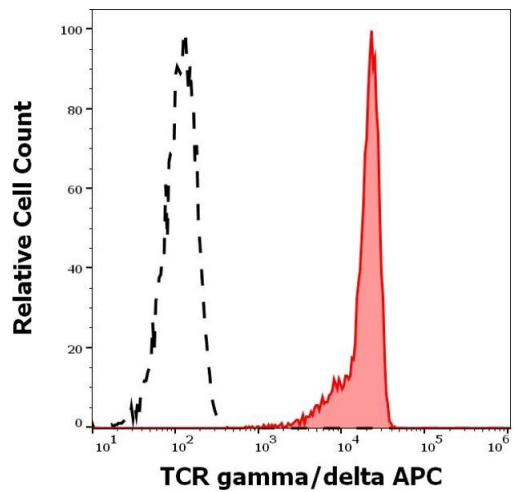
Handling

Buffer:	Stabilizing phosphate buffered saline (PBS), pH 7.4, 15 mM sodium azide
Preservative:	Sodium azide
Precaution of Use:	This product contains Sodium azide: a POISONOUS AND HAZARDOUS SUBSTANCE which should be handled by trained staff only.
Storage:	4 °C
Storage Comment:	Store at 2-8°C. Protect from prolonged exposure to light. Do not freeze.



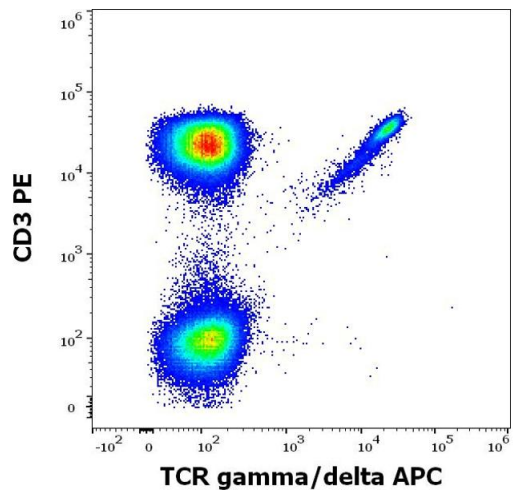
Flow Cytometry

Image 1. Flow cytometry surface staining pattern of human peripheral whole blood stained using anti-human TCR gamma/delta (11F2) APC antibody (10 μ L reagent / 100 μ L of peripheral whole blood).



Flow Cytometry

Image 2. Separation of human CD3 positive TCR gamma/delta positive lymphocytes (red-filled) from CD3 negative TCR gamma/delta negative lymphocytes (black-dashed) in flow cytometry analysis (surface staining) of human peripheral whole blood stained using anti-human TCR gamma/delta (11F2) APC antibody (10 μ L reagent / 100 μ L of peripheral whole blood).



Flow Cytometry

Image 3. Flow cytometry multicolor surface staining pattern of human lymphocytes stained using anti-human CD3 (UCHT1) PE antibody (20 μ L reagent / 100 μ L of peripheral whole blood) and anti-human TCR gamma/delta (11F2) APC antibody (10 μ L reagent / 100 μ L of peripheral whole blood).