

Datasheet for ABIN7506015
anti-TCR gamma/delta antibody (FITC)



[Go to Product page](#)

3 Images

Overview

| | |
|--------------|---|
| Quantity: | 100 tests |
| Target: | TCR gamma/delta |
| Reactivity: | Human |
| Host: | Mouse |
| Clonality: | Monoclonal |
| Conjugate: | This TCR gamma/delta antibody is conjugated to FITC |
| Application: | Flow Cytometry (FACS) |

Product Details

| | |
|------------------|---|
| Purpose: | Anti-Hu TCR gamma/delta FITC |
| Immunogen: | Purified CD3 antigen complex |
| Clone: | 11F2 |
| Isotype: | IgG1 |
| Specificity: | The mouse monoclonal antibody 11F2 recognizes an extracellular epitope in all molecular forms of the TCR gamma/delta. |
| Purification: | Purified antibody is conjugated with fluorescein isothiocyanate (FITC) under optimum conditions and unconjugated antibody and free fluorochrome are removed by size-exclusion chromatography. |
| Endotoxin Level: | Low Endotoxin |

Target Details

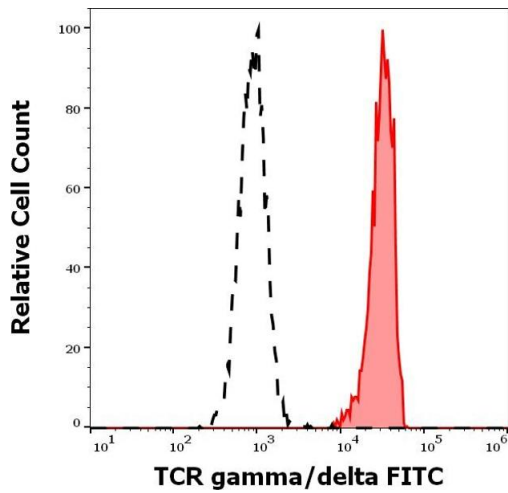
| | |
|-------------------|--|
| Target: | TCR gamma/delta |
| Alternative Name: | TCR gamma/delta (TCR gamma/delta Products) |
| Background: | The antigen-specific T cell receptor (TCR) is composed of either alpha and beta subunit, or gamma and delta subunit. Majority of T cells present in the blood, lymph and secondary lymphoid organs express TCR alpha/beta heterodimers, whereas the T cells expressing TCR gamma/delta heterodimers are localized mainly in epithelial tissues and at the sites of infection. The subunits of TCR heterodimers are covalently bonded and in the endoplasmic reticulum they associate with CD3 subunits to form functional TCR-CD3 complex. Lack of expression of any of the chains is sufficient to stop cell surface expression.,TCRG/D |

Application Details

| | |
|--------------------|--|
| Application Notes: | Flow cytometry: The reagent is designed for analysis of human blood cells using 4 µL reagent / 100 µL of whole blood or 10 ⁶ cells in a suspension. The content of a vial (0.4 ml) is sufficient for 100 tests. |
| Restrictions: | For Research Use only |

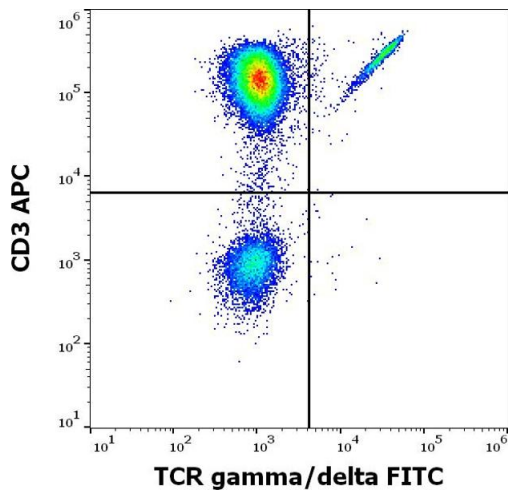
Handling

| | |
|--------------------|--|
| Buffer: | Stabilizing phosphate buffered saline (PBS), pH 7.4, 15 mM sodium azide |
| Preservative: | Sodium azide |
| Precaution of Use: | This product contains Sodium azide: a POISONOUS AND HAZARDOUS SUBSTANCE which should be handled by trained staff only. |
| Storage: | 4 °C |
| Storage Comment: | Store at 2-8°C. Protect from prolonged exposure to light. Do not freeze. |



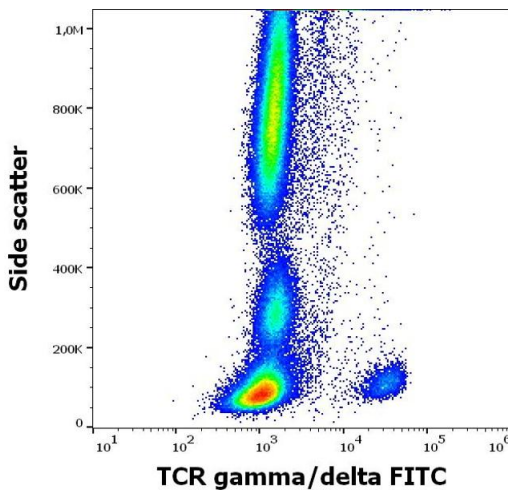
Flow Cytometry

Image 1. Separation of human TCR gamma/delta positive lymphocytes (red-filled) from TCR gamma/delta negative lymphocytes (black-dashed) in flow cytometry analysis (surface staining) of human peripheral whole blood stained using anti-human TCR gamma/delta (11F2) FITC antibody (4 μ L reagent / 100 μ L of peripheral whole blood).



Flow Cytometry

Image 2. Flow cytometry multicolor surface staining of human lymphocytes stained using anti-human TCR gamma/delta (11F2) FITC antibody (4 μ L reagent / 100 μ L of peripheral whole blood) and anti-human CD3(UCHT1) APC antibody (10 μ L reagent / 100 μ L of peripheral whole blood).



Flow Cytometry

Image 3. Flow cytometry surface staining pattern of human peripheral whole blood stained using anti-human TCR gamma/delta (11F2) FITC antibody (4 μ L reagent / 100 μ L of peripheral whole blood).