

Datasheet for ABIN7506039

PFN1 Protein**3** Images[Go to Product page](#)

Overview

Quantity:	0.1 mg
Target:	PFN1
Origin:	Birch
Source:	Escherichia coli (E. coli)
Protein Type:	Recombinant
Application:	ELISA, Flow Cytometry (FACS)

Product Details

Purpose:	rBet v 1 (Betula verrucosa 1.0101)
Characteristics:	Recombinant protein rBet v 1 is expressed in Escherichia coli. DNA sequence encoding 172 AAs was fused with Strep-tag at the N-terminus. A calculated molecular mass of recombinant protein is 19 kDa.
Purification:	Purified by sequential steps of ion exchange and affinity chromatography.

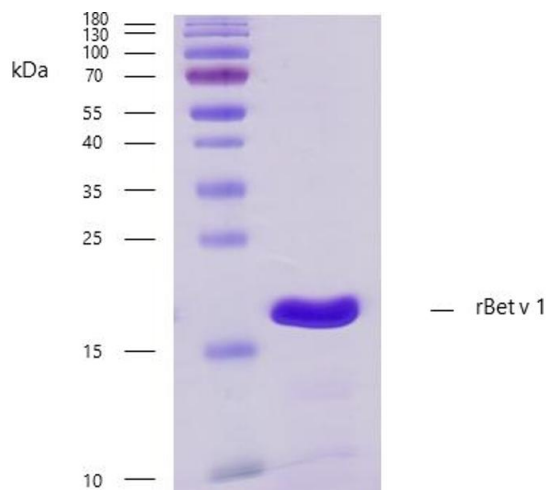
Target Details

Target:	PFN1
Alternative Name:	Profilin 1 (PFN1 Products)
UniProt:	P15494
Pathways:	Regulation of Actin Filament Polymerization , Tube Formation , Maintenance of Protein Location

Application Details

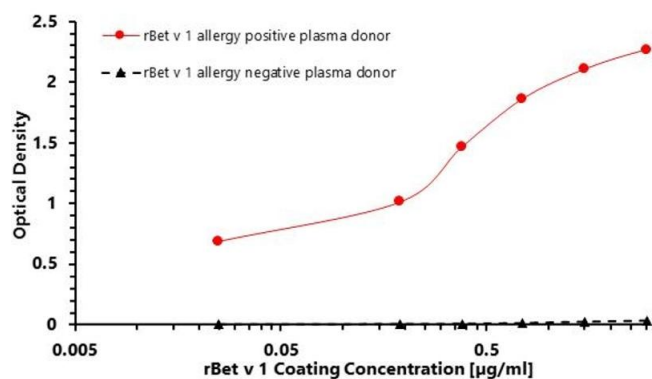
Application Notes:	Optimal working dilution should be determined by the investigator.
Restrictions:	For Research Use only
Handling	
Format:	Lyophilized
Buffer:	Lyophilized from a 0.2 µm filtered solution in Storage buffer (100 mM Tris, 150 mM NaCl, 0.01 % Tween 20, pH 8.0).
Preservative:	Azide free
Storage:	4 °C
Storage Comment:	Store at -20°C to -80°C. Reconstitute in sterile deionized water. Use reconstituted product immediately or aliquot for further storage at -20°C to -80°C.

Images



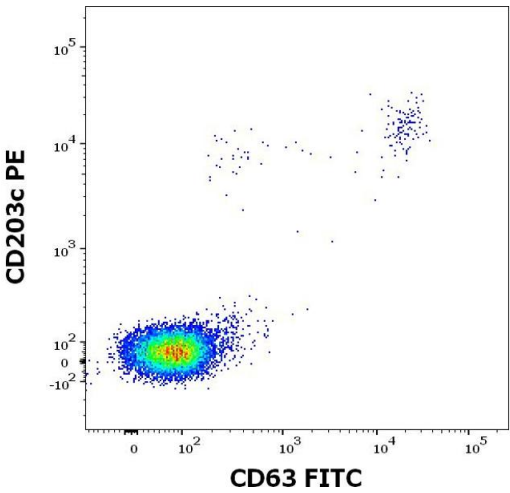
SDS-PAGE

Image 1. Recombinant allergen rBet v 1 purity verification. 5 µg of rBet v 1 with > 95 % purity checked by Coomassie Brilliant Blue stained SDS-PAGE.



ELISA

Image 2. ELISA (enzyme-linked immunosorbent assay) test was designed to prove the bond between the coated target recombinant allergen rBet v 1 and allergen-specific human plasma IgG4 antibodies of Betula verrucosa positive donor. A measurable signal was subsequently generated by the addition of biotin labeled anti-human IgG4 (detection) antibody, Streptavidin-HRP and substrate solution (TMB). The intensity of the signal is proportional to the amount of



coated rBet v 1.

Flow Cytometry

Image 3. Flow cytometry dot-plot staining pattern of rBet v 1 recombinant allergen stimulated human peripheral whole blood lymphocytes and basophils of a proven allergic donor stained using anti-human CD63 (MEM-259) FITC and anti-human CD203c (NP4D6) PE antibodies .