

Datasheet for ABIN7506043

PPIL1 Protein**3** Images[Go to Product page](#)

Overview

Quantity:	0.1 mg
Target:	PPIL1
Origin:	Birch
Source:	Escherichia coli (E. coli)
Protein Type:	Recombinant
Application:	ELISA, Western Blotting (WB), Flow Cytometry (FACS)

Product Details

Purpose:	rBet v 7 (Betula verrucosa 7.0101)
Characteristics:	Recombinant protein rBet v 7 is expressed in Escherichia coli. DNA sequence encoding 186 AAs was fused with Strep-tag at the N-terminus. A calculated molecular mass of recombinant protein is 19,7 kDa.
Purification:	Purified by sequential steps of ion exchange and affinity chromatography.

Target Details

Target:	PPIL1
Alternative Name:	Peptidyl-prolyl cis-trans isomerase (PPIL1 Products)
UniProt:	P81531

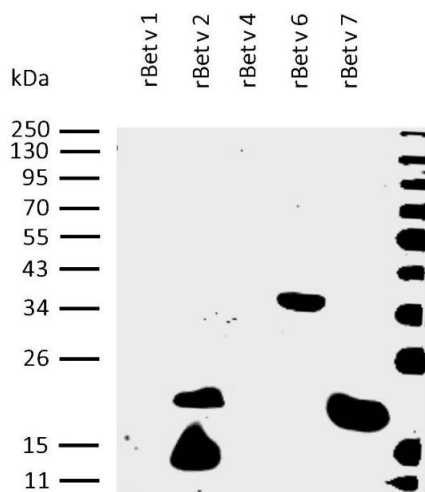
Application Details

Application Notes:	Optimal working dilution should be determined by the investigator.
--------------------	--

Application Details

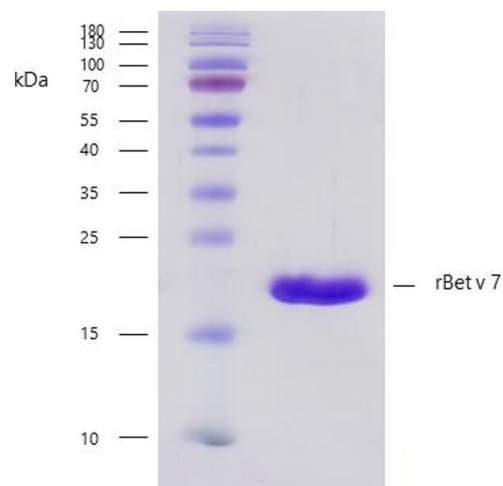
Restrictions:	For Research Use only
Handling	
Format:	Lyophilized
Buffer:	Lyophilized from a 0.2 µm filtered solution in Storage buffer (100 mM Tris, 150 mM NaCl, 0.01 % Tween 20, pH 8.0).
Preservative:	Azide free
Storage:	4 °C
Storage Comment:	Store at -20°C to -80°C. Reconstitute in sterile deionized water. Use reconstituted product immediately or aliquot for further storage at -20°C to -80°C.

Images



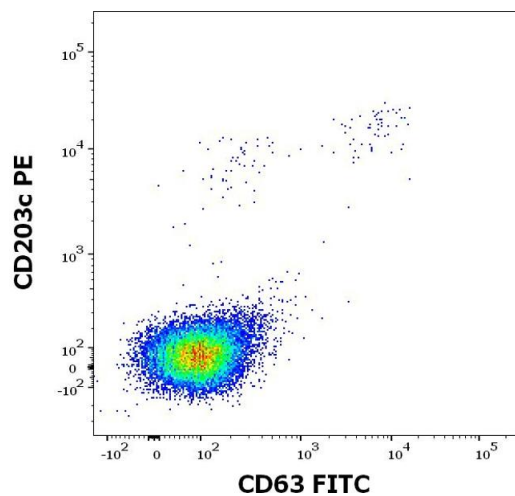
Western Blotting

Image 1. Presence of sIgE antibodies specific to recombinant allergens Bet v 1, Bet v 2, Bet v 4, Bet v 6, and Bet v 7 was analysed in plasma of a patient with confirmed presence (routine clinical test) of specific IgE antibodies to birch pollen allergen extract. Western blotting analysis was performed on recombinant allergens rBet v 1, rBet v 2, rBet v 4, rBet v 6, and rBet v 7 mixed and heated (100 °C, 5 min) with reducing SDS loading buffer. Samples were resolved using 12 % Tris-glycine gel electrophoresis. Nitrocellulose membrane blot was incubated with plasma of an allergic patient (1:10). Captured sIgE antibodies were detected by biotinylated anti-human IgE secondary antibody (2 µg/mL) followed by IRDye 800CW Streptavidin (1:5000). The analysed patient plasma contained sIgE antibodies specific to Bet v 2, Bet v 6, Bet v 7.



SDS-PAGE

Image 2. Recombinant allergen rBet v 7 purity verification. 5 µg of rBet v 7 with > 95 % purity checked by Coomassie Brilliant Blue stained SDS-PAGE.



Flow Cytometry

Image 3. Flow cytometry dot-plot staining pattern of rBet v 7 recombinant allergen stimulated human peripheral whole blood lymphocytes and basophils of a proven allergic donor stained using anti-human CD63 (MEM-259) FITC and anti-human CD203c (NP4D6) PE antibodies .