

Datasheet for ABIN7506044
Lipocalin 1 Protein (LCN1)[Go to Product page](#)

4 Images

Overview

Quantity:	0.1 mg
Target:	Lipocalin 1 (LCN1)
Origin:	Dog
Source:	Escherichia coli (E. coli)
Protein Type:	Recombinant
Application:	Western Blotting (WB), ELISA, Flow Cytometry (FACS)

Product Details

Purpose:	rCan f 1 (Canis familiaris 1.0101)
Characteristics:	Recombinant protein rCan f 1 is expressed in Escherichia coli. DNA sequence encoding 169 AAs was fused with Strep-tag at the N-terminus. A calculated molecular mass of recombinant protein is 18,8 kDa.
Purification:	Purified by sequential steps of ion exchange and affinity chromatography.

Target Details

Target:	Lipocalin 1 (LCN1)
Alternative Name:	Major allergen Can f 1 (LCN1 Products)
UniProt:	018873

Application Details

Application Notes:	Optimal working dilution should be determined by the investigator.
--------------------	--

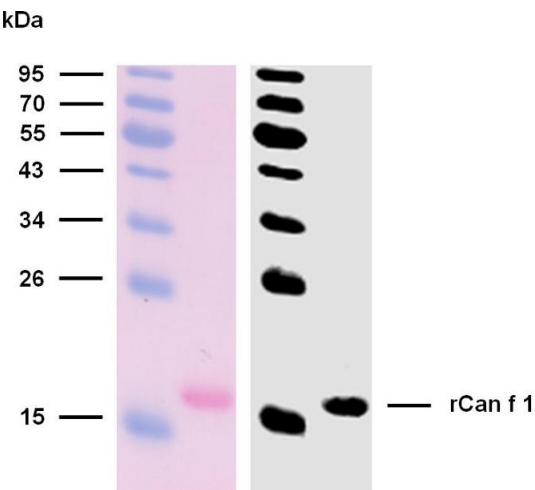
Application Details

Restrictions: For Research Use only

Handling

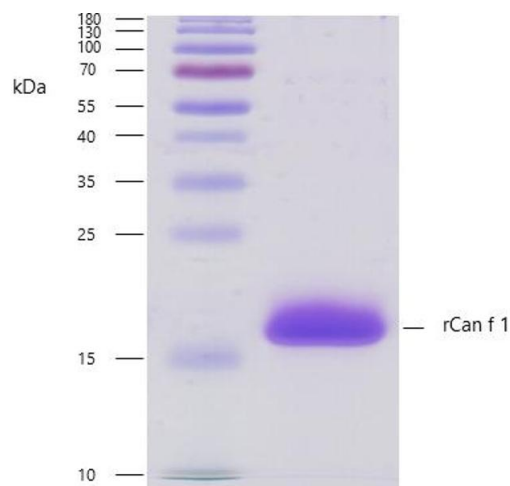
Format:	Lyophilized
Buffer:	Lyophilized from a 0.2 µm filtered solution in Storage buffer (100 mM Tris, 150 mM NaCl, 0.01 % Tween 20, pH 8.0).
Preservative:	Azide free
Storage:	4 °C
Storage Comment:	Store at -20°C to -80°C. Reconstitute in sterile deionized water. Use reconstituted product immediately or aliquot for further storage at -20°C to -80°C.

Images



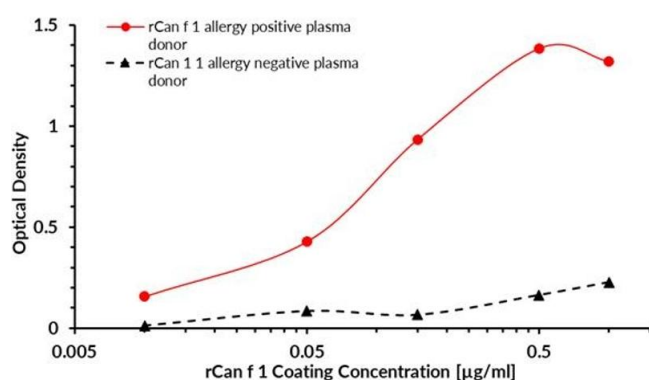
Western Blotting

Image 1. Reactivity of rCan f 1 with sIgE antibodies in plasma of a patient with confirmed presence (routine clinical test) of specific IgE antibodies to dog epithelium allergen extract. Western blotting analysis was performed on recombinant allergen rCan f 1 mixed and heated (100 °C, 5 min) with reducing SDS loading buffer. Sample was resolved using 15 % Tris-glycine gel electrophoresis. Nitrocellulose membrane blot was stained with Ponceau S to verify protein transfer. After thorough washing and blocking steps, the membrane was incubated with plasma of an allergic patient (1:10). Captured rCan f 1 sIgE antibodies were detected by biotinylated anti-human IgE secondary antibody (2 µg/mL) followed by IRDye 800CW Streptavidin (1:5000).



SDS-PAGE

Image 2. Recombinant allergen rCan f 1 purity verification. 5 µg of rCan f 1 with > 95 % purity checked by Coomassie Brilliant Blue stained SDS-PAGE.



ELISA

Image 3. ELISA (enzyme-linked immunosorbent assay) test was designed to prove the bond between the coated target recombinant allergen rCan f 1 and allergen-specific human plasma IgG4 antibodies of Canis familiaris positive donor. A measurable signal was subsequently generated by the addition of biotin labeled anti-human IgG4 (detection) antibody, Streptavidin-HRP and substrate solution (TMB). The intensity of the signal is proportional to the amount of coated rCan f 1.

Please check the [product details page](#) for more images. Overall 4 images are available for ABIN7506044.