

Datasheet for ABIN750733  
**anti-Cyclic GMP antibody**

## 2 Images

[Go to Product page](#)

## Overview

Quantity:	100 µL
Target:	Cyclic GMP (cGMP)
Reactivity:	Please inquire
Host:	Rabbit
Clonality:	Polyclonal
Conjugate:	This Cyclic GMP antibody is un-conjugated
Application:	Immunofluorescence (Paraffin-embedded Sections) (IF (p)), Immunofluorescence (Cultured Cells) (IF (cc)), ELISA, Immunohistochemistry (Frozen Sections) (IHC (fro)), Immunohistochemistry (Paraffin-embedded Sections) (IHC (p))

## Product Details

Immunogen:	OVA conjugated cGMP
Isotype:	IgG
Specificity:	Due to the fact that BSA is used as the carrier, this antibody will cross-react with Albumin.
Cross-Reactivity:	Rat
Cross-Reactivity (Details):	cGMP
Purification:	Purified by Protein A.

## Target Details

Target:	Cyclic GMP (cGMP)
---------	-------------------

## Target Details

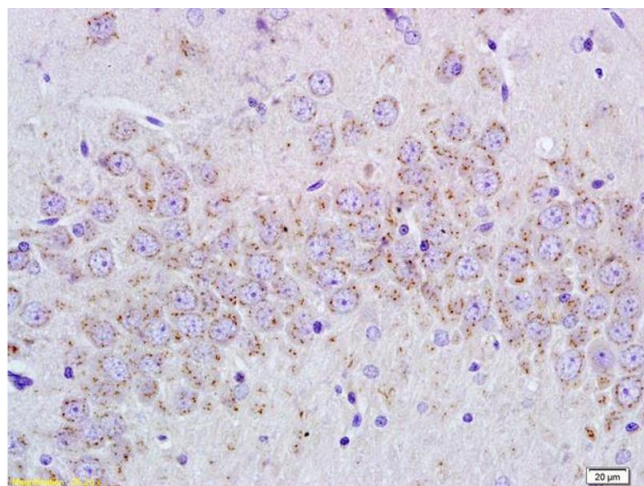
Alternative Name:	Cgmp ( <a href="#">cGMP Products</a> )
Target Type:	Chemical
Background:	<p>Synonyms: Cyclic GMP, Cyclic guanosine monophosphate, Guanosine 3 5 Cyclic Monophosphate.</p> <p>Background: Cyclic guanosine monophosphate (cGMP) serves as a second messenger in a manner similar to that observed with cAMP. Peptide hormones, such as the natriuretic factors, activate receptors that are associated with membrane-bound guanylate cyclase (GC). Receptor activation of GC leads to the conversion of GTP to cGMP. Nitric oxide (NO) also stimulates cGMP production by activating soluble GC, perhaps by binding to the heme moiety of the enzyme. Similar to cAMP, cGMP mediates most of its intracellular effects through the activation of specific cGMP dependent protein kinases (PKG).</p>

## Application Details

Application Notes:	IHC-P 1:100-500 IF(IHC-P) 1:50-200
Restrictions:	For Research Use only

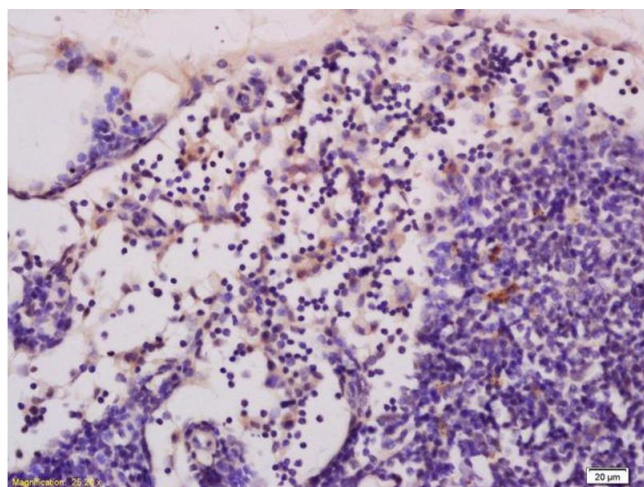
## Handling

Format:	Liquid
Concentration:	1 µg/µL
Buffer:	0.01M TBS( pH 7.4) with 1 % BSA, 0.02 % Proclin300 and 50 % Glycerol.
Preservative:	Sodium azide
Precaution of Use:	This product contains Sodium azide: a POISONOUS AND HAZARDOUS SUBSTANCE, which should be handled by trained staff only.
Storage:	4 °C,-20 °C
Storage Comment:	Shipped at 4°C. Store at -20°C for one year. Avoid repeated freeze/thaw cycles.
Expiry Date:	12 months



#### Immunohistochemistry

**Image 1.** Formalin-fixed and paraffin embedded rat brain tissue labeled with Anti-cGMP Polyclonal Antibody, Unconjugated (ABIN750733) at 1:400, followed by conjugation to the secondary antibody and DAB staining



#### Immunohistochemistry

**Image 2.** Formalin-fixed and paraffin embedded rat pancreas tissue labeled with Anti-cGMP Polyclonal Antibody, Unconjugated (ABIN750733) at 1:400, followed by conjugation to the secondary antibody and DAB staining