



[Go to Product page](#)

Datasheet for ABIN750763
anti-SULF2 antibody (AA 651-750)

2 Images

Overview

Quantity:	100 µL
Target:	SULF2
Binding Specificity:	AA 651-750
Reactivity:	Rat
Host:	Rabbit
Clonality:	Polyclonal
Conjugate:	This SULF2 antibody is un-conjugated
Application:	Western Blotting (WB), ELISA, Immunofluorescence (Cultured Cells) (IF (cc)), Immunofluorescence (Paraffin-embedded Sections) (IF (p)), Immunohistochemistry (Paraffin-embedded Sections) (IHC (p)), Immunohistochemistry (Frozen Sections) (IHC (fro))

Product Details

Immunogen:	KLH conjugated synthetic peptide derived from human Sulfatase 2
Isotype:	IgG
Cross-Reactivity:	Rat
Predicted Reactivity:	Human,Mouse,Dog,Cow,Pig,Chicken,Rabbit
Purification:	Purified by Protein A.

Target Details

Target:	SULF2
---------	-------

Target Details

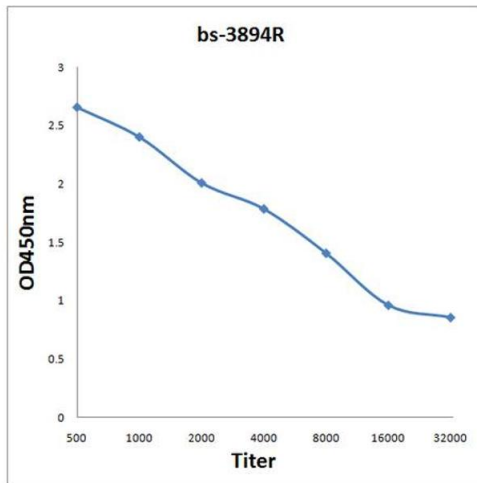
Alternative Name:	Sulfatase 2 (SULF2 Products)
Background:	Synonyms: HSULF-2, Extracellular sulfatase Sulf-2, SULF2, KIAA1247, UNQ559/PRO1120 Background: Exhibits arylsulfatase activity and highly specific endoglucosamine-6-sulfatase activity. It can remove sulfate from the C-6 position of glucosamine within specific subregions of intact heparin.
Gene ID:	55959
UniProt:	Q8IWU5

Application Details

Application Notes:	WB 1:300-5000 ELISA 1:500-1000 IHC-P 1:200-400 IHC-F 1:100-500 IF(IHC-P) 1:50-200 IF(IHC-F) 1:50-200 IF(ICC) 1:50-200
Restrictions:	For Research Use only

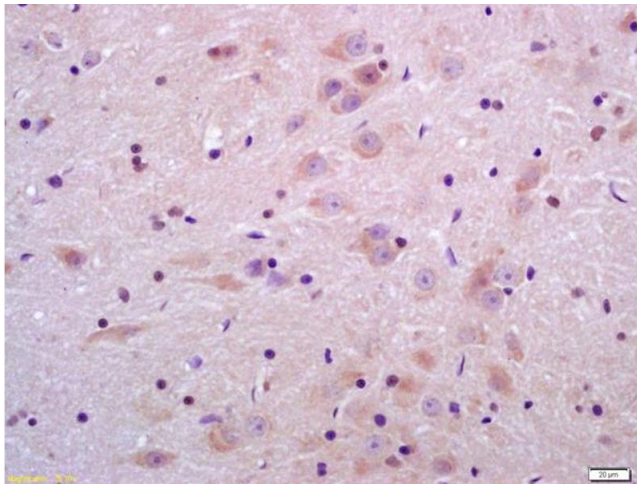
Handling

Format:	Liquid
Concentration:	1 µg/µL
Buffer:	0.01M TBS(pH 7.4) with 1 % BSA, 0.02 % Proclin300 and 50 % Glycerol.
Preservative:	ProClin
Precaution of Use:	This product contains ProClin: a POISONOUS AND HAZARDOUS SUBSTANCE, which should be handled by trained staff only.
Storage:	4 °C,-20 °C
Storage Comment:	Shipped at 4°C. Store at -20°C for one year. Avoid repeated freeze/thaw cycles.
Expiry Date:	12 months



ELISA

Image 1. Antigen: 0.2 µg/100 µL Primary: Antiserum, 1:500, 1:1000, 1:2000, 1:4000, 1:8000, 1:16000, 1:32000; Secondary: HRP conjugated Goat-Anti-Rabbit IgG at 1: 5000; TMB staining; Read the data in MicroplateReader by 450



Immunohistochemistry

Image 2. Formalin-fixed and paraffin embedded rat brain labeled with Anti-Sulfatase 2 Polyclonal Antibody, Unconjugated (ABIN750763) at 1:200 followed by conjugation to the secondary antibody and DAB staining