

Datasheet for ABIN751108
anti-WIF1 antibody (AA 51-150)[Go to Product page](#)

1 Image

Overview

Quantity:	100 µL
Target:	WIF1
Binding Specificity:	AA 51-150
Reactivity:	Rat
Host:	Rabbit
Clonality:	Polyclonal
Conjugate:	This WIF1 antibody is un-conjugated
Application:	Western Blotting (WB), ELISA, Immunohistochemistry (Paraffin-embedded Sections) (IHC (p)), Immunofluorescence (Cultured Cells) (IF (cc)), Immunofluorescence (Paraffin-embedded Sections) (IF (p)), Immunohistochemistry (Frozen Sections) (IHC (fro))

Product Details

Immunogen:	KLH conjugated synthetic peptide derived from human WIF1
Isotype:	IgG
Cross-Reactivity:	Rat
Predicted Reactivity:	Human, Mouse, Dog, Cow, Pig, Horse, Chicken
Purification:	Purified by Protein A.

Target Details

Target:	WIF1
---------	------

Target Details

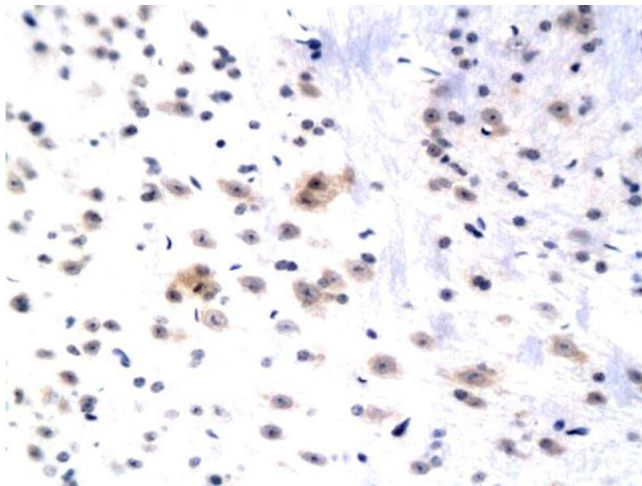
Alternative Name:	WIF1 (WIF1 Products)
Background:	Synonyms: WIF-1, Wnt inhibitory factor 1, WIF1, UNQ191/PRO217 Background: Binds to WNT proteins and inhibits their activities. May be involved in mesoderm segmentation.
Gene ID:	11197
UniProt:	Q9Y5W5
Pathways:	WNT Signaling, Positive Regulation of fat Cell Differentiation

Application Details

Application Notes:	WB 1:300-5000 ELISA 1:500-1000 IHC-P 1:200-400 IHC-F 1:100-500 IF(IHC-P) 1:50-200 IF(IHC-F) 1:50-200 IF(ICC) 1:50-200
Restrictions:	For Research Use only

Handling

Format:	Liquid
Concentration:	1 µg/µL
Buffer:	0.01M TBS(pH 7.4) with 1 % BSA, 0.02 % Proclin300 and 50 % Glycerol.
Preservative:	ProClin
Precaution of Use:	This product contains ProClin: a POISONOUS AND HAZARDOUS SUBSTANCE, which should be handled by trained staff only.
Storage:	4 °C,-20 °C
Storage Comment:	Shipped at 4°C. Store at -20°C for one year. Avoid repeated freeze/thaw cycles.
Expiry Date:	12 months



Immunohistochemistry

Image 1. Formalin-fixed and paraffin embedded rat hippocampus labeled with Anti WIF1 Polyclonal Antibody, Unconjugated (ABIN751108) followed by conjugation to the secondary antibody and DAB staining