



[Go to Product page](#)

Datasheet for ABIN751198

anti-ADCY6 antibody (AA 760-819)

2 Images

1 Publication

Overview

Quantity:	100 µL
Target:	ADCY6
Binding Specificity:	AA 760-819
Reactivity:	Human, Rat
Host:	Rabbit
Clonality:	Polyclonal
Conjugate:	This ADCY6 antibody is un-conjugated
Application:	Western Blotting (WB), ELISA, Immunocytochemistry (ICC), Immunofluorescence (Cultured Cells) (IF (cc)), Immunofluorescence (Paraffin-embedded Sections) (IF (p)), Immunohistochemistry (Paraffin-embedded Sections) (IHC (p)), Immunohistochemistry (Frozen Sections) (IHC (fro))

Product Details

Immunogen:	KLH conjugated synthetic peptide derived from human ADCY6
Isotype:	IgG
Specificity:	This antibody may also work in Rat, but has not yet been tested.
Cross-Reactivity:	Human, Rat
Predicted Reactivity:	Mouse,Cow,Sheep,Pig,Horse
Purification:	Purified by Protein A.

Target Details

Target:	ADCY6
Alternative Name:	ADCY6 (ADCY6 Products)
Background:	Synonyms: AC6, LCCS8, Adenylate cyclase type 6, ATP pyrophosphate-lyase 6, Adenylate cyclase type VI, Adenylyl cyclase 6, Ca(2+)-inhibitable adenylyl cyclase, ADCY6, KIAA0422 Background: Membrane-bound, calcium-inhibitable adenylyl cyclase.
Gene ID:	112
UniProt:	O43306
Pathways:	EGFR Signaling Pathway , Neurotrophin Signaling Pathway , Thyroid Hormone Synthesis , cAMP Metabolic Process , Myometrial Relaxation and Contraction , G-protein mediated Events , Interaction of EGFR with phospholipase C-gamma

Application Details

Application Notes:	WB 1:300-5000 ELISA 1:500-1000 IHC-P 1:200-400 IHC-F 1:100-500 IF(IHC-P) 1:50-200 IF(IHC-F) 1:50-200 IF(ICC) 1:50-200 ICC 1:100-500
Restrictions:	For Research Use only

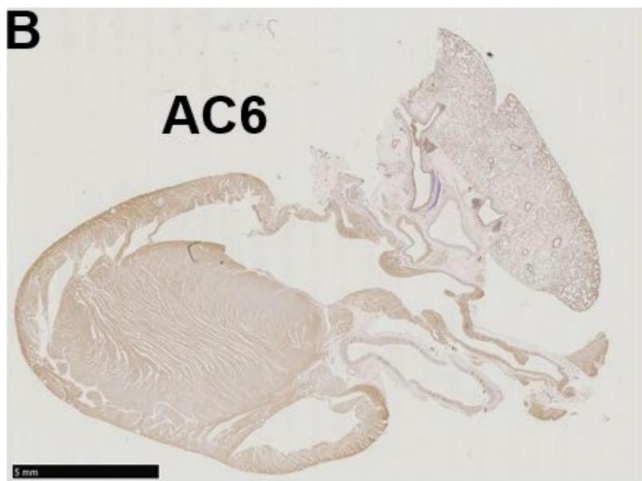
Handling

Format:	Liquid
Concentration:	1 µg/µL
Buffer:	0.01M TBS(pH 7.4) with 1 % BSA, 0.02 % Proclin300 and 50 % Glycerol.
Preservative:	ProClin
Precaution of Use:	This product contains ProClin: a POISONOUS AND HAZARDOUS SUBSTANCE, which should be handled by trained staff only.
Storage:	4 °C,-20 °C
Storage Comment:	Shipped at 4°C. Store at -20°C for one year. Avoid repeated freeze/thaw cycles.

Publications

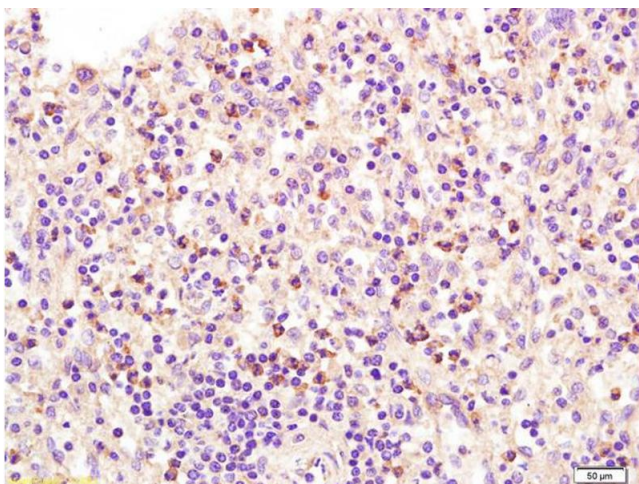
Product cited in: Okamoto, Aung, Tanaka, Takeda, Takagi, Igarashi, Ishii, Yamakawa, Ono: "Preferential Expression of Ca²⁺-Stimulable Adenylyl Cyclase III in the Supraventricular Area, including Arrhythmogenic Pulmonary Vein of the Rat Heart." in: **Biomolecules**, Vol. 12, Issue 5, (2022) ([PubMed](#)).

Images



Immunohistochemistry

Image 1. Immunohistochemistry of a left-sided rat heart for adenylyl cyclase AC6. AC6 is known as a heart subtype of AC and presents a positive control with solid staining (brown). Source: PMID35625651



Immunohistochemistry

Image 2. Formalin-fixed and paraffin embedded human spleen labeled with Anti ADCY6 Polyclonal Antibody, Unconjugated (ABIN751198) at 1:200 followed by conjugation to the secondary antibody and DAB staining