

Datasheet for ABIN751528

anti-Glucagon Receptor antibody (AA 11-110)

4 Images

1 Publication

[Go to Product page](#)

Overview

Quantity:	100 µL
Target:	Glucagon Receptor (GCGR)
Binding Specificity:	AA 11-110
Reactivity:	Human, Rat, Mouse
Host:	Rabbit
Clonality:	Polyclonal
Conjugate:	This Glucagon Receptor antibody is un-conjugated
Application:	ELISA, Western Blotting (WB), Immunohistochemistry (Paraffin-embedded Sections) (IHC (p)), Flow Cytometry (FACS), Immunofluorescence (Cultured Cells) (IF (cc)), Immunofluorescence (Paraffin-embedded Sections) (IF (p)), Immunohistochemistry (Frozen Sections) (IHC (fro))

Product Details

Immunogen:	KLH conjugated synthetic peptide derived from human Glucagon Receptor
Isotype:	IgG
Cross-Reactivity:	Human, Mouse, Rat
Predicted Reactivity:	Dog,Cow,Pig,Chicken,Guinea Pig
Purification:	Purified by Protein A.

Target Details

Target:	Glucagon Receptor (GCGR)
---------	--------------------------

Target Details

Alternative Name:	Glucagon Receptor (GCGR Products)
Background:	<p>Synonyms: GGR, GL-R, Glucagon receptor, GCGR</p> <p>Background: G-protein coupled receptor for glucagon that plays a central role in the regulation of blood glucose levels and glucose homeostasis. Regulates the rate of hepatic glucose production by promoting glycogen hydrolysis and gluconeogenesis. Plays an important role in mediating the responses to fasting. Ligand binding causes a conformation change that triggers signaling via guanine nucleotide-binding proteins (G proteins) and modulates the activity of down-stream effectors, such as adenylate cyclase. Promotes activation of adenylate cyclase. Besides, plays a role in signaling via a phosphatidylinositol-calcium second messenger system.</p>
Gene ID:	2642
UniProt:	P47871
Pathways:	Carbohydrate Homeostasis , Regulation of Carbohydrate Metabolic Process

Application Details

Application Notes:	<p>WB 1:300-5000</p> <p>ELISA 1:500-1000</p> <p>FCM 1:20-100</p> <p>IHC-P 1:200-400</p> <p>IHC-F 1:100-500</p> <p>IF(IHC-P) 1:50-200</p> <p>IF(IHC-F) 1:50-200</p> <p>IF(ICC) 1:50-200</p>
Restrictions:	For Research Use only

Handling

Format:	Liquid
Concentration:	1 µg/µL
Buffer:	0.01M TBS(pH 7.4) with 1 % BSA, 0.02 % Proclin300 and 50 % Glycerol.
Preservative:	ProClin
Precaution of Use:	This product contains ProClin: a POISONOUS AND HAZARDOUS SUBSTANCE, which should be handled by trained staff only.

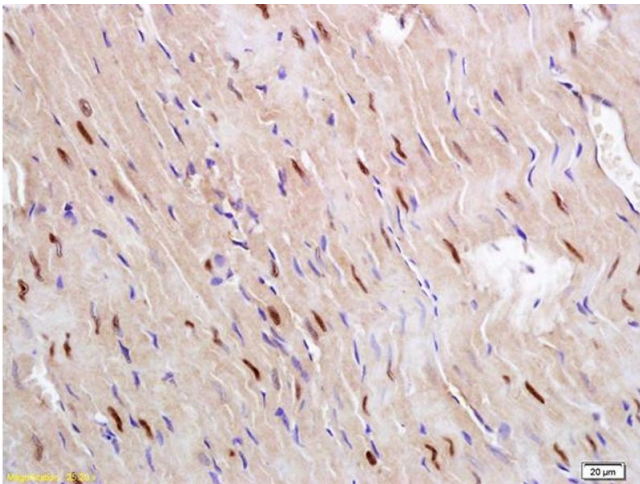
Handling

Storage:	4 °C,-20 °C
Storage Comment:	Shipped at 4°C. Store at -20°C for one year. Avoid repeated freeze/thaw cycles.
Expiry Date:	12 months

Publications

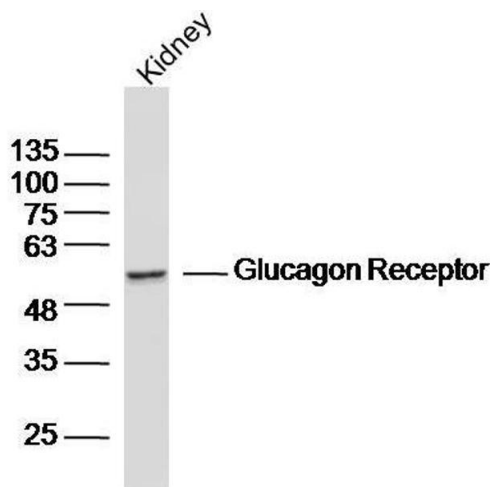
Product cited in:	Rafacho, Gonçalves-Neto, Santos-Silva, Alonso-Magdalena, Merino, Taboga, Carneiro, Boschero, Nadal, Quesada: "Pancreatic alpha-cell dysfunction contributes to the disruption of glucose homeostasis and compensatory insulin hypersecretion in glucocorticoid-treated rats." in: PLoS ONE , Vol. 9, Issue 4, pp. e93531, (2014) (PubMed).
-------------------	---

Images



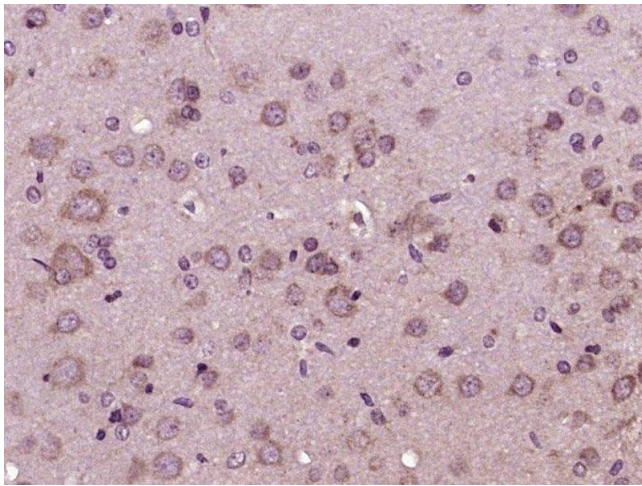
Immunohistochemistry

Image 1. Formalin-fixed and paraffin embedded rat heart labeled with Anti Glucagon Receptor Polyclonal Antibody, Unconjugated (ABIN751528) followed by conjugation to the secondary antibody and DAB staining



Western Blotting

Image 2. Mouse kidney lysates probed with Glucagon Receptor Polyclonal Antibody, unconjugated at 1:300 overnight at 4°C followed by a conjugated secondary antibody for 60 minutes at 37°C.



Immunohistochemistry (Paraffin-embedded Sections)

Image 3. Paraformaldehyde-fixed, paraffin embedded rat brain tissue, Antigen retrieval by boiling in sodium citrate buffer (pH6.0) for 15min, Block endogenous peroxidase by 3% hydrogen peroxide for 20 minutes, Blocking buffer (normal goat serum) at 37°C for 30min, Antibody incubation with Glucagon Receptor Polyclonal Antibody, Unconjugated (bs-3945R) at 1:400 overnight at 4°C, followed by a conjugated secondary antibody and DAB staining.

Please check the [product details page](#) for more images. Overall 4 images are available for ABIN751528.