

Datasheet for ABIN751648
anti-COX1 antibody (AA 401-500)[Go to Product page](#)

2 Images

1 Publication

Overview

Quantity:	100 µL
Target:	COX1
Binding Specificity:	AA 401-500
Reactivity:	Mouse, Rat
Host:	Rabbit
Clonality:	Polyclonal
Conjugate:	This COX1 antibody is un-conjugated
Application:	Western Blotting (WB), ELISA, Immunocytochemistry (ICC), Immunofluorescence (Cultured Cells) (IF (cc)), Immunofluorescence (Paraffin-embedded Sections) (IF (p)), Immunohistochemistry (Paraffin-embedded Sections) (IHC (p)), Immunohistochemistry (Frozen Sections) (IHC (fro))

Product Details

Immunogen:	KLH conjugated synthetic peptide derived from human COX1
Isotype:	IgG
Cross-Reactivity:	Mouse, Rat
Predicted Reactivity:	Human,Dog,Cow,Pig,Horse,Chicken,Rabbit
Purification:	Purified by Protein A.

Target Details

Target:	COX1
---------	------

Target Details

Alternative Name:	COX1/MTCO1 (COX1 Products)
Background:	<p>Synonyms: COI, COX I, COXI, Cytochrome c oxidase polypeptide I, Cytochrome C Oxidase subunit I, Mitochondrially encoded cytochrome c oxidase I, MT CO1, MTCO 1, MTCO1, MT-CO1, MTCO1, Cytochrome c oxidase subunit 1, COX1_HUMAN.</p> <p>Background: Cytochrome c oxidase is the component of the respiratory chain that catalyzes the reduction of oxygen to water. Subunits 1-3 form the functional core of the enzyme complex. CO I is the catalytic subunit of the enzyme. Electrons originating in cytochrome c are transferred via the copper A center of subunit 2 and heme A of subunit 1 to the bimetallic center formed by heme A3 and copper B. This protein is involved in the pathway oxidative phosphorylation, which is part of Energy metabolism.</p>
Gene ID:	4512
UniProt:	P00395
Pathways:	Proton Transport

Application Details

Application Notes:	WB 1:300-5000 ELISA 1:500-1000 IHC-P 1:200-400 IHC-F 1:100-500 IF(IHC-P) 1:50-200 IF(IHC-F) 1:50-200 IF(ICC) 1:50-200 ICC 1:100-500
Restrictions:	For Research Use only

Handling

Format:	Liquid
Concentration:	1 µg/µL
Buffer:	0.01M TBS(pH 7.4) with 1 % BSA, 0.02 % Proclin300 and 50 % Glycerol.
Preservative:	ProClin
Precaution of Use:	This product contains ProClin: a POISONOUS AND HAZARDOUS SUBSTANCE, which should be handled by trained staff only.

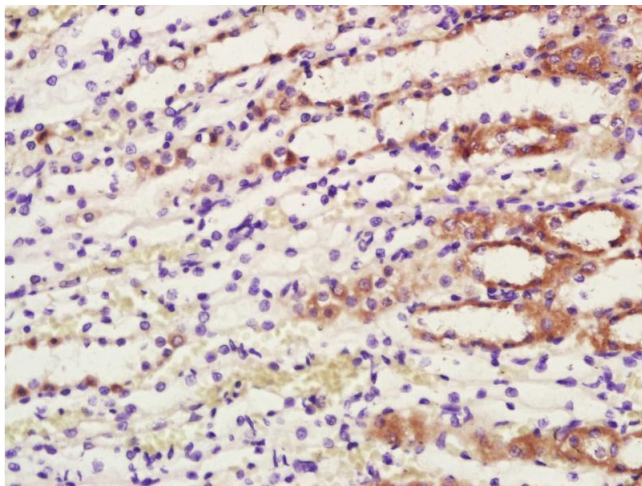
Handling

Storage:	4 °C,-20 °C
Storage Comment:	Shipped at 4°C. Store at -20°C for one year. Avoid repeated freeze/thaw cycles.
Expiry Date:	12 months

Publications

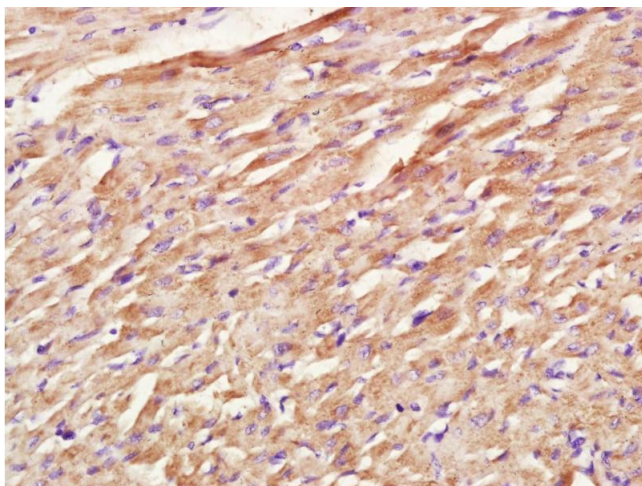
Product cited in:	Hui, Lu, Han, Zhou, Liu, Li, Jin: "Resveratrol improves mitochondrial function in the remnant kidney from 5/6 nephrectomized rats." in: Acta histochemica , Vol. 119, Issue 4, pp. 392-399, (2017) (PubMed).
-------------------	---

Images



Immunohistochemistry (Paraffin-embedded Sections)

Image 1. Paraformaldehyde-fixed, paraffin embedded rat kidney; Antigen retrieval by boiling in sodium citrate buffer (pH6.0) for 15min; Block endogenous peroxidase by 3% hydrogen peroxide for 20 minutes; Blocking buffer (normal goat serum) at 37°C for 30min; Antibody incubation with COX1/MTCO1 Polyclonal Antibody, Unconjugated (bs-3953R) at 1:400 overnight at 4°C, followed by a conjugated secondary antibody for 20 minutes and DAB staining.



Immunohistochemistry (Paraffin-embedded Sections)

Image 2. Paraformaldehyde-fixed, paraffin embedded rat heart; Antigen retrieval by boiling in sodium citrate buffer (pH6.0) for 15min; Block endogenous peroxidase by 3% hydrogen peroxide for 20 minutes; Blocking buffer (normal goat serum) at 37°C for 30min; Antibody incubation with COX1/MTCO1 Polyclonal Antibody, Unconjugated (bs-3953R) at 1:400 overnight at 4°C, followed by a conjugated secondary antibody for 20 minutes and DAB staining.