

## Datasheet for ABIN751678 anti-MT-ND6 antibody (AA 51-150)



[Go to Product page](#)

3 Images

1 Publication

### Overview

Quantity:	100 µL
Target:	MT-ND6
Binding Specificity:	AA 51-150
Reactivity:	Human, Rat
Host:	Rabbit
Clonality:	Polyclonal
Conjugate:	This MT-ND6 antibody is un-conjugated
Application:	ELISA, Immunofluorescence (Cultured Cells) (IF (cc)), Immunofluorescence (Paraffin-embedded Sections) (IF (p)), Immunohistochemistry (Paraffin-embedded Sections) (IHC (p)), Immunohistochemistry (Frozen Sections) (IHC (fro))

### Product Details

Immunogen:	KLH conjugated synthetic peptide derived from human MTND6
Isotype:	IgG
Cross-Reactivity:	Human, Rat
Predicted Reactivity:	Mouse,Dog,Cow,Sheep,Horse
Purification:	Purified by Protein A.

### Target Details

Target:	MT-ND6
---------	--------

## Target Details

Alternative Name:	MT-ND6 ( <a href="#">MT-ND6 Products</a> )
Background:	<p>Synonyms: MTND6, NADH-ubiquinone oxidoreductase chain 6, NADH dehydrogenase subunit 6, MT-ND6, NADH6, ND6</p> <p>Background: Core subunit of the mitochondrial membrane respiratory chain NADH dehydrogenase (Complex I) that is believed to belong to the minimal assembly required for catalysis. Complex I functions in the transfer of electrons from NADH to the respiratory chain. The immediate electron acceptor for the enzyme is believed to be ubiquinone (By similarity).</p>
Gene ID:	4541
UniProt:	<a href="#">P03923</a>

## Application Details

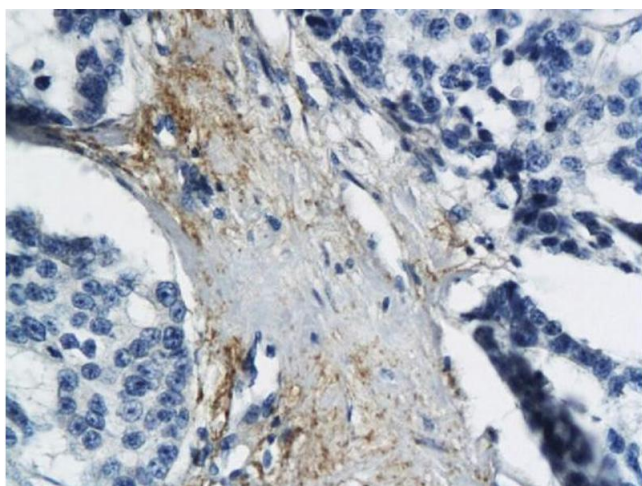
Application Notes:	ELISA 1:500-1000 IHC-P 1:200-400 IHC-F 1:100-500 IF(IHC-P) 1:50-200 IF(IHC-F) 1:50-200 IF(ICC) 1:50-200
Restrictions:	For Research Use only

## Handling

Format:	Liquid
Concentration:	1 µg/µL
Buffer:	0.01M TBS( pH 7.4) with 1 % BSA, 0.02 % Proclin300 and 50 % Glycerol.
Preservative:	ProClin
Precaution of Use:	This product contains ProClin: a POISONOUS AND HAZARDOUS SUBSTANCE, which should be handled by trained staff only.
Storage:	4 °C,-20 °C
Storage Comment:	Shipped at 4°C. Store at -20°C for one year. Avoid repeated freeze/thaw cycles.
Expiry Date:	12 months

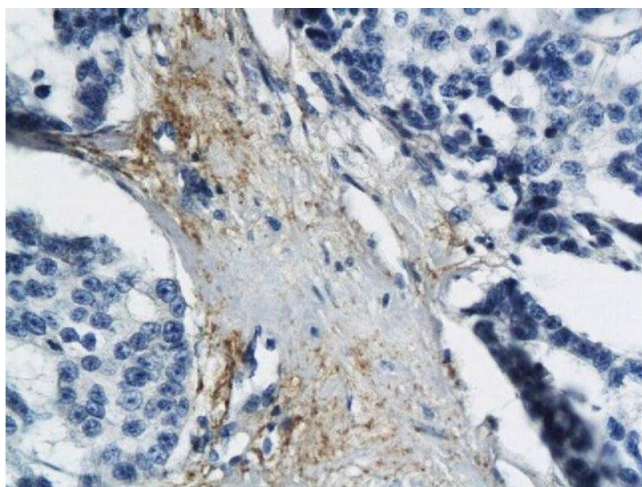
Product cited in: Wu, Zhang, Nickerson, Gao, Sun, Chen, Zhang, Zhang, Gao, Chen, Luo, Wang, Sun: "Cumulative mtDNA damage and mutations contribute to the progressive loss of RGCs in a rat model of glaucoma." in: **Neurobiology of disease**, Vol. 74, pp. 167-79, (2015) ([PubMed](#)).

## Images



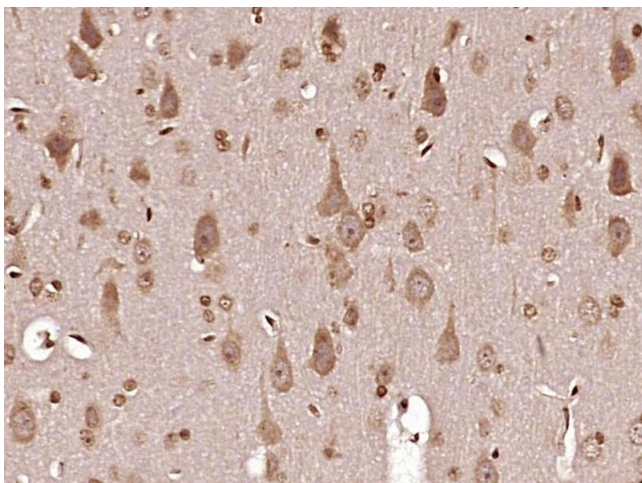
### Immunohistochemistry

**Image 1.** Formalin-fixed and paraffin embedded human breast cancer labeled with Anti MT-ND6 Polyclonal Antibody, Unconjugated (ABIN751678) followed by conjugation to the secondary antibody and DAB staining



### Immunohistochemistry (Paraffin-embedded Sections)

**Image 2.** Formalin-fixed and paraffin embedded human breast cancer labeled with Anti MT-ND6 Polyclonal Antibody, Unconjugated followed by conjugation to the secondary antibody and DAB staining



### Immunohistochemistry (Paraffin-embedded Sections)

**Image 3.** Paraformaldehyde-fixed, paraffin embedded Rat brain Antigen retrieval by boiling in sodium citrate buffer (pH6.0) for 15min Block endogenous peroxidase by 3% hydrogen peroxide for 20 minutes Blocking buffer (normal goat serum) at 37°C for 30min Antibody incubation with MT-ND6 Polyclonal Antibody, Unconjugated at 1:400 overnight at 4°C, DAB staining.