



Datasheet for ABIN7517588

anti-CCL11 antibody



[Go to Product page](#)

1 Image

Overview

Quantity:	100 µg
Target:	CCL11
Reactivity:	Mouse
Host:	Mouse
Clonality:	Monoclonal
Conjugate:	This CCL11 antibody is un-conjugated
Application:	Flow Cytometry (FACS)

Product Details

Clone:	L402H11
Isotype:	IgG2a
Purification:	Affinity purified.

Target Details

Target:	CCL11
Alternative Name:	CCL11 (CCL11 Products)
Background:	<p>CCL11 selectively recruits eosinophils through binding to the chemokine receptor CCR3 during allergic response. CCL11 production is upregulated in response to several proinflammatory cytokines, such as IL-4, IL-13, TNF-α, and IFN-α, produced by mast cells and Th2 lymphocytes. CCL11 has been reported to stimulate eosinophil release from bone marrow, resulting in an elevated level of circulating eosinophils.</p>

Target Details

Pathways: [Regulation of Actin Filament Polymerization](#), [The Global Phosphorylation Landscape of SARS-CoV-2 Infection](#)

Application Details

Application Notes: Optimal working dilution should be determined by the investigator.

Restrictions: For Research Use only

Handling

Concentration: 0.5 mg/mL

Buffer: phosphate-buffered solution, pH 7.2, containing 0.09 % sodium azide.

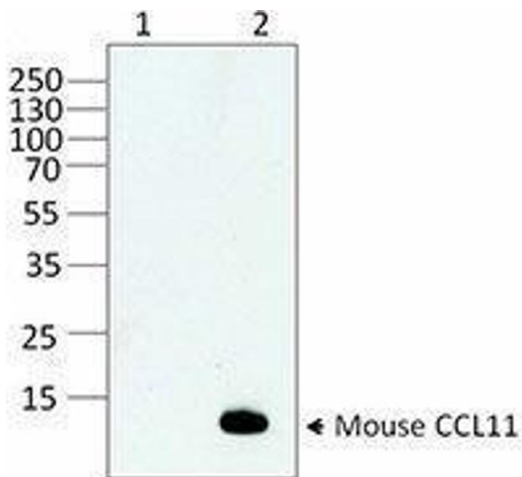
Preservative: Sodium azide

Precaution of Use: This product contains Sodium azide: a POISONOUS AND HAZARDOUS SUBSTANCE which should be handled by trained staff only.

Storage: 4 °C

Storage Comment: Upon receipt, store undiluted between 2°C and 8°C.

Images



Western Blotting

Image 1.