



[Go to Product page](#)

Datasheet for ABIN751903  
**anti-SDHA antibody (AA 561-664)**

1 Image

### Overview

Quantity:	100 µL
Target:	SDHA
Binding Specificity:	AA 561-664
Reactivity:	Human, Mouse
Host:	Rabbit
Clonality:	Polyclonal
Conjugate:	This SDHA antibody is un-conjugated
Application:	Western Blotting (WB), ELISA, Immunofluorescence (Cultured Cells) (IF (cc)), Immunofluorescence (Paraffin-embedded Sections) (IF (p)), Immunohistochemistry (Paraffin-embedded Sections) (IHC (p)), Immunohistochemistry (Frozen Sections) (IHC (fro))

### Product Details

Immunogen:	KLH conjugated synthetic peptide derived from human SDHA
Isotype:	IgG
Cross-Reactivity:	Human, Mouse
Predicted Reactivity:	Rat
Purification:	Purified by Protein A.

### Target Details

Target:	SDHA
---------	------

## Target Details

---

Alternative Name:	SDHA ( <a href="#">SDHA Products</a> )
Background:	Synonyms: FP, PGL5, SDH1, SDH2, SDHF, CMD1GG, Succinate dehydrogenase [ubiquinone] flavoprotein subunit, mitochondrial, Flavoprotein subunit of complex II, SDHA Background: Flavoprotein (FP) subunit of succinate dehydrogenase (SDH) that is involved in complex II of the mitochondrial electron transport chain and is responsible for transferring electrons from succinate to ubiquinone (coenzyme Q). Can act as a tumor suppressor.
Gene ID:	6389
UniProt:	<a href="#">P31040</a>

## Application Details

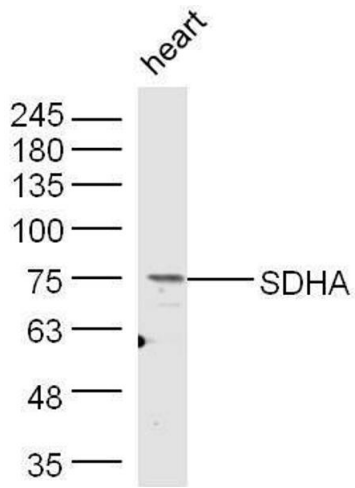
---

Application Notes:	WB 1:300-5000 ELISA 1:500-1000 IHC-P 1:200-400 IHC-F 1:100-500 IF(IHC-P) 1:50-200 IF(IHC-F) 1:50-200 IF(ICC) 1:50-200
Restrictions:	For Research Use only

## Handling

---

Format:	Liquid
Concentration:	1 µg/µL
Buffer:	0.01M TBS( pH 7.4) with 1 % BSA, 0.02 % Proclin300 and 50 % Glycerol.
Preservative:	ProClin
Precaution of Use:	This product contains ProClin: a POISONOUS AND HAZARDOUS SUBSTANCE, which should be handled by trained staff only.
Storage:	4 °C,-20 °C
Storage Comment:	Shipped at 4°C. Store at -20°C for one year. Avoid repeated freeze/thaw cycles.
Expiry Date:	12 months



### Western Blotting

**Image 1.** Mouse heart lysates probed with Rabbit Anti-SDHA Polyclonal Antibody, Unconjugated at 1:500 for 90 min at 37°C.