



Datasheet for ABIN752038  
**anti-ENO3 antibody (AA 341-434)**



[Go to Product page](#)

2 Images

Overview

Quantity:	100 µL
Target:	ENO3
Binding Specificity:	AA 341-434
Reactivity:	Human, Mouse, Rat
Host:	Rabbit
Clonality:	Polyclonal
Conjugate:	This ENO3 antibody is un-conjugated
Application:	Immunohistochemistry (Paraffin-embedded Sections) (IHC (p))

Product Details

Immunogen:	KLH conjugated synthetic peptide derived from human ENO3
Isotype:	IgG
Cross-Reactivity:	Human, Mouse, Rat
Predicted Reactivity:	Cow,Sheep,Pig,Horse,Chicken
Purification:	Purified by Protein A.

Target Details

Target:	ENO3
Alternative Name:	ENO3 ( <a href="#">ENO3 Products</a> )
Background:	Synonyms: MSE, GSD13, Beta-enolase, 2-phospho-D-glycerate hydro-lyase, Enolase 3, Muscle-

## Target Details

---

specific enolase, Skeletal muscle enolase, ENO3

Background: ENO3 is also known as beta enolase, one of the three enolase isoenzymes found in mammals. A switch from alpha enolase to beta enolase occurs in muscle tissue during development and ENO3, a homodimer, is found in skeletal muscle cells in the adult and appears to have a function in striated muscle development and regeneration. Mutations can result in decreased stability of the enzyme and be associated with a glycogen storage myopathy. This results in exercise-induced myalgias, generalized muscle weakness and fatigability.

---

Gene ID: 2027

---

UniProt: [P13929](#)

## Application Details

---

Application Notes: IHC-P 1:200-400

---

Restrictions: For Research Use only

## Handling

---

Format: Liquid

---

Concentration: 1 µg/µL

---

Buffer: 0.01M TBS( pH 7.4) with 1 % BSA, 0.02 % Proclin300 and 50 % Glycerol.

---

Preservative: ProClin

---

Precaution of Use: This product contains ProClin: a POISONOUS AND HAZARDOUS SUBSTANCE, which should be handled by trained staff only.

---

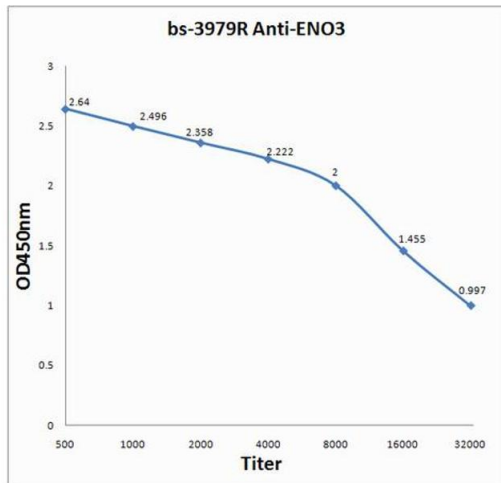
Storage: 4 °C,-20 °C

---

Storage Comment: Shipped at 4°C. Store at -20°C for one year. Avoid repeated freeze/thaw cycles.

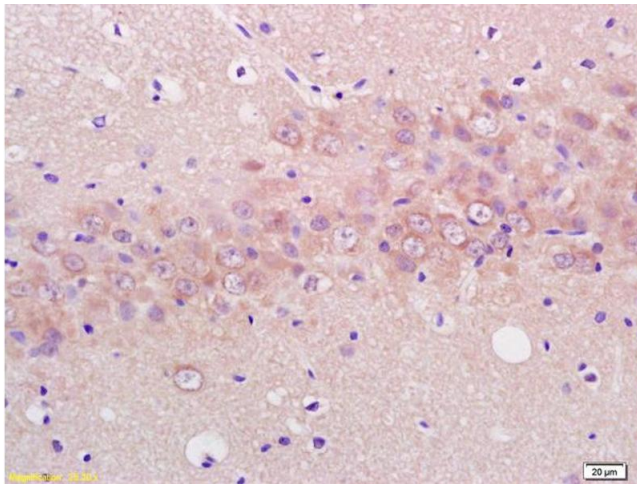
---

Expiry Date: 12 months



### ELISA

**Image 1.** Antigen: 0.2 µg/100 µL Primary: Antiserum, 1:500, 1:1000, 1:2000, 1:4000, 1:8000, 1:16000, 1:32000; Secondary: HRP conjugated Goat-Anti-Rabbit IgG at 1: 5000; TMB staining; Read the data in MicroplateReader by 450



### Immunohistochemistry

**Image 2.** Formalin-fixed and paraffin embedded rat brain labeled with Anti ENO3 Polyclonal Antibody (ABIN752038), Unconjugated at 1:200, followed by conjugation to the secondary antibody and DAB staining