

Datasheet for ABIN752293

**anti-SLC25A10 antibody (AA 201-287)**[Go to Product page](#)**3** Images

## Overview

Quantity:	100 µL
Target:	SLC25A10
Binding Specificity:	AA 201-287
Reactivity:	Human
Host:	Rabbit
Clonality:	Polyclonal
Conjugate:	This SLC25A10 antibody is un-conjugated
Application:	Western Blotting (WB), ELISA, Immunofluorescence (Cultured Cells) (IF (cc)), Immunofluorescence (Paraffin-embedded Sections) (IF (p)), Immunohistochemistry (Paraffin-embedded Sections) (IHC (p)), Immunohistochemistry (Frozen Sections) (IHC (fro))

## Product Details

Immunogen:	KLH conjugated synthetic peptide derived from human SLC25A10
Isotype:	IgG
Cross-Reactivity:	Human
Predicted Reactivity:	Mouse,Rat,Dog,Horse
Purification:	Purified by Protein A.

## Target Details

Target:	SLC25A10
---------	----------

## Target Details

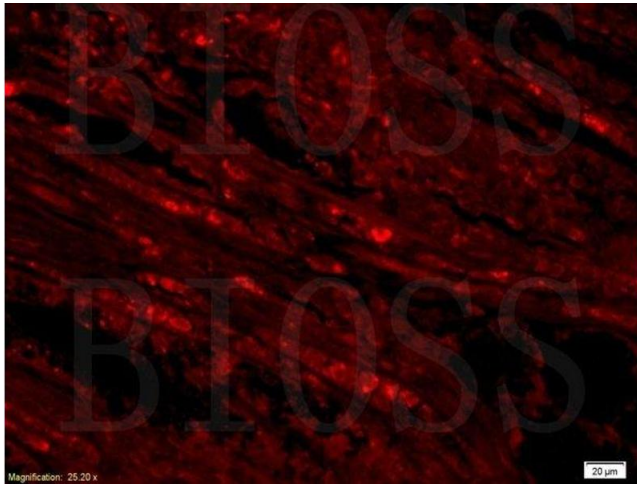
Alternative Name:	SLC25A10 ( <a href="#">SLC25A10 Products</a> )
Background:	Synonyms: DIC, Mitochondrial dicarboxylate carrier, Solute carrier family 25 member 10, SLC25A10  Background: Involved in translocation of malonate, malate and succinate in exchange for phosphate, sulfate, sulfite or thiosulfate across mitochondrial inner membrane.
Gene ID:	1468
UniProt:	<a href="#">Q9UBX3</a>
Pathways:	<a href="#">Monocarboxylic Acid Catabolic Process</a> , <a href="#">Dicarboxylic Acid Transport</a>

## Application Details

Application Notes:	WB 1:300-5000 ELISA 1:500-1000 IHC-P 1:200-400 IHC-F 1:100-500 IF(IHC-P) 1:50-200 IF(IHC-F) 1:50-200 IF(ICC) 1:50-200
Restrictions:	For Research Use only

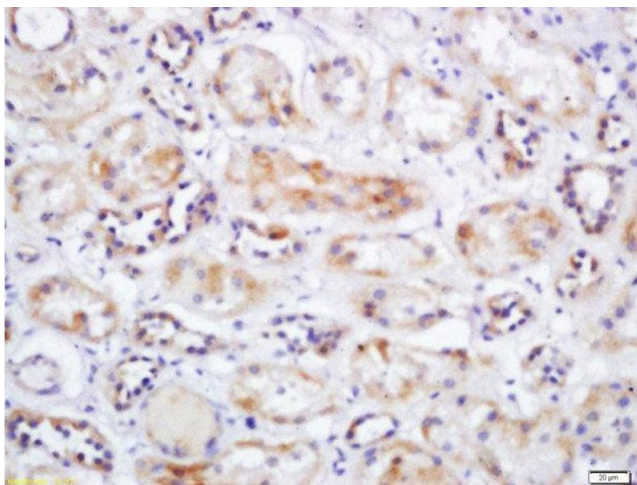
## Handling

Format:	Liquid
Concentration:	1 µg/µL
Buffer:	0.01M TBS( pH 7.4) with 1 % BSA, 0.02 % Proclin300 and 50 % Glycerol.
Preservative:	ProClin
Precaution of Use:	This product contains ProClin: a POISONOUS AND HAZARDOUS SUBSTANCE, which should be handled by trained staff only.
Storage:	4 °C,-20 °C
Storage Comment:	Shipped at 4°C. Store at -20°C for one year. Avoid repeated freeze/thaw cycles.
Expiry Date:	12 months



#### Immunohistochemistry (Paraffin-embedded Sections)

**Image 1.** Formalin-fixed and paraffin embedded human gastric carcinoma labeled with Anti SLC25A10 Polyclonal Antibody, Unconjugated followed by conjugation to the secondary antibody



#### Immunohistochemistry (Paraffin-embedded Sections)

**Image 2.** Formalin-fixed and paraffin embedded human kidney labeled with Rabbit Anti-SLC25A10 Polyclonal Antibody, Unconjugated at 1:200 followed by conjugation to the secondary antibody and DAB staining



#### Immunofluorescence

**Image 3.** Formalin-fixed and paraffin embedded human gastric carcinoma labeled with Anti SLC25A10 Polyclonal Antibody, Unconjugated (ABIN752293) followed by conjugation to the secondary antibody