

Datasheet for ABIN752788

anti-Pancreatic Amylase antibody (AA 151-250)**2** Images[Go to Product page](#)

Overview

Quantity:	100 µL
Target:	Pancreatic Amylase
Binding Specificity:	AA 151-250
Reactivity:	Human, Mouse, Rat
Host:	Rabbit
Clonality:	Polyclonal
Conjugate:	This Pancreatic Amylase antibody is un-conjugated
Application:	Immunofluorescence (Cultured Cells) (IF (cc)), Immunofluorescence (Paraffin-embedded Sections) (IF (p)), Western Blotting (WB), ELISA, Immunohistochemistry (Paraffin-embedded Sections) (IHC (p)), Immunohistochemistry (Frozen Sections) (IHC (fro))

Product Details

Immunogen:	KLH conjugated synthetic peptide derived from human Pancreatic Amylase
Isotype:	IgG
Specificity:	This antibody will detect both AMY1A and AMY2A.
Cross-Reactivity:	Human, Mouse, Rat
Predicted Reactivity:	Dog,Cow,Pig,Horse,Rabbit
Purification:	Purified by Protein A.

Target Details

Target:	Pancreatic Amylase
Abstract:	Pancreatic Amylase Products
Background:	<p>Synonyms: PA, AMY2, Pancreatic alpha-amylase, 1,4-alpha-D-glucan glucanohydrolase, AMY2A</p> <p>Background: Pancreatic amylase is a digestive enzyme secreted by the pancreas. It consists of a single polypeptide chain with a molecular weight of 54 kDa. Pancreatic amylase and salivary amylase are the products of separate genes and, although they share 98 % amino acid sequence homology, they differ in molecular size, isoelectric point and antigenic properties.</p> <p>Measurement of amylase concentrations in serum is a diagnostic test for various pancreatic disorders (especially acute and relapsing pancreatitis).</p>
Gene ID:	279
UniProt:	P04746

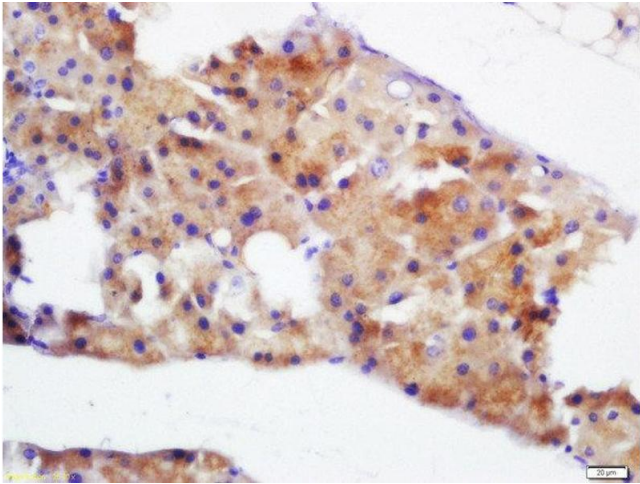
Application Details

Application Notes:	WB 1:300-5000 ELISA 1:500-1000 IHC-P 1:200-400 IHC-F 1:100-500 IF(IHC-P) 1:50-200 IF(IHC-F) 1:50-200 IF(ICC) 1:50-200
Restrictions:	For Research Use only

Handling

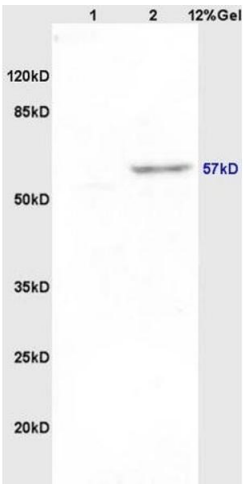
Format:	Liquid
Concentration:	1 µg/µL
Buffer:	0.01M TBS(pH 7.4) with 1 % BSA, 0.02 % Proclin300 and 50 % Glycerol.
Preservative:	ProClin
Precaution of Use:	This product contains ProClin: a POISONOUS AND HAZARDOUS SUBSTANCE, which should be handled by trained staff only.
Storage:	4 °C,-20 °C
Storage Comment:	Shipped at 4°C. Store at -20°C for one year. Avoid repeated freeze/thaw cycles.

Expiry Date: 12 months



Immunohistochemistry (Paraffin-embedded Sections)

Image 1. Formalin-fixed and paraffin embedded mouse pancreas labeled with Rabbit Anti-Pancreatic Amylase Polyclonal Antibody, Unconjugated at 1:200 followed by conjugation to the secondary antibody and DAB staining



SDS-PAGE

Image 2. Lane 1: rat brain lysates Lane 2: rat brain lysates probed with Anti Pancreatic Amylase Polyclonal Antibody, Unconjugated (ABIN752788) at 1:200 in 4 °C. Followed by conjugation to secondary antibody at 1:3000 90min in 37 °C. Predicted band 57kD. Observed band size: 57kD.