

Datasheet for ABIN752893  
**anti-SLC25A11 antibody (AA 35-140)**[Go to Product page](#)

## 2 Images

## Overview

Quantity:	100 µL
Target:	SLC25A11
Binding Specificity:	AA 35-140
Reactivity:	Human
Host:	Rabbit
Clonality:	Polyclonal
Conjugate:	This SLC25A11 antibody is un-conjugated
Application:	ELISA, Immunofluorescence (Cultured Cells) (IF (cc)), Immunofluorescence (Paraffin-embedded Sections) (IF (p)), Immunohistochemistry (Paraffin-embedded Sections) (IHC (p)), Immunohistochemistry (Frozen Sections) (IHC (fro))

## Product Details

Immunogen:	KLH conjugated synthetic peptide derived from human SLC25A11
Isotype:	IgG
Cross-Reactivity:	Human
Predicted Reactivity:	Mouse,Rat,Dog,Cow,Pig,Horse,Rabbit
Purification:	Purified by Protein A.

## Target Details

Target:	SLC25A11
---------	----------

## Target Details

Alternative Name:	SLC25A11 ( <a href="#">SLC25A11 Products</a> )
Background:	<p>Synonyms: Mitochondrial 2 oxoglutarate/malate carrier protein, OGC, OGCP, SLC20A4, Solute carrier family 20 oxoglutarate carrier member 4, Solute carrier family 20 member 4, Solute carrier family 25 mitochondrial carrier oxoglutarate carrier member 11, Solute carrier family 25 member 11.</p> <p>Background: SLC25A11 catalyzes the transport of 2-oxoglutarate across the inner mitochondrial membrane in an electroneutral exchange for malate or other dicarboxylic acids, and plays an important role in several metabolic processes, including the malate-aspartate shuttle, the oxoglutarate/isocitrate shuttle, in gluconeogenesis from lactate, and in nitrogen metabolism.</p>
Gene ID:	8402
Pathways:	<a href="#">Dicarboxylic Acid Transport</a>

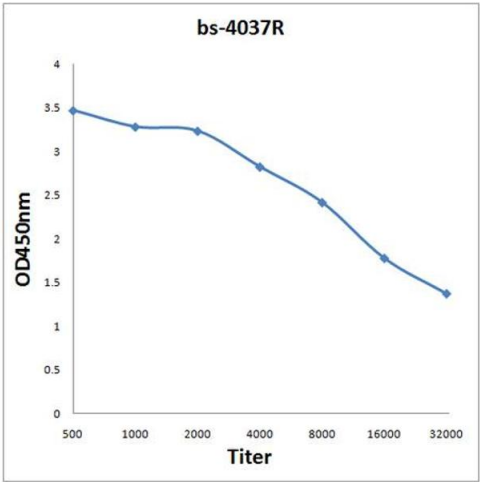
## Application Details

Application Notes:	ELISA 1:500-1000 IHC-P 1:200-400 IHC-F 1:100-500 IF(IHC-P) 1:50-200 IF(IHC-F) 1:50-200 IF(ICC) 1:50-200
Restrictions:	For Research Use only

## Handling

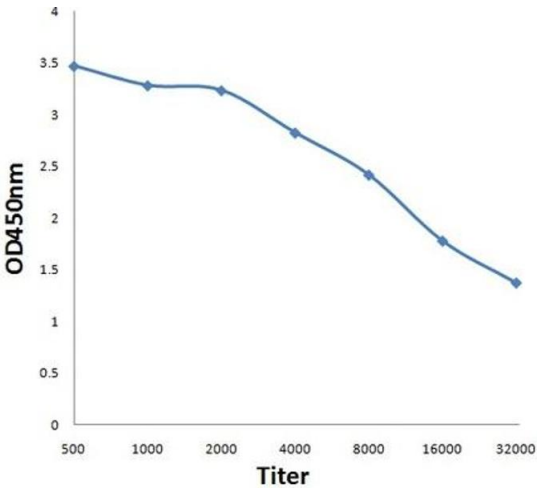
Format:	Liquid
Concentration:	1 µg/µL
Buffer:	0.01M TBS( pH 7.4) with 1 % BSA, 0.02 % Proclin300 and 50 % Glycerol.
Preservative:	ProClin
Precaution of Use:	This product contains ProClin: a POISONOUS AND HAZARDOUS SUBSTANCE, which should be handled by trained staff only.
Storage:	4 °C,-20 °C
Storage Comment:	Shipped at 4°C. Store at -20°C for one year. Avoid repeated freeze/thaw cycles.

Expiry Date: 12 months



ELISA

**Image 1.** Antigen: 0.2 µg/100 µL Primary: Antiserum, 1:500, 1:1000, 1:2000, 1:4000, 1:8000, 1:16000, 1:32000; Secondary: HRP conjugated Goat-Anti-Rabbit IgG at 1: 5000; TMB staining; Read the data in MicroplateReader by 450



ELISA

**Image 2.** Antigen: 0.2ug/100ul, Primary: Antiserum, 1:500, 1:1000, 1:2000, 1:4000, 1:8000, 1:16000, 1:32000, Secondary: HRP conjugated Goat-Anti-Rabbit IgG at 1: 5000, TMB staining, Read the data in MicroplateReader by 450nm