

Datasheet for ABIN7529160

TCP1 alpha/CCTA Protein (AA 1-556) (His tag)[Go to Product page](#)**1** Image

Overview

Quantity:	100 µg
Target:	TCP1 alpha/CCTA (TCP1)
Protein Characteristics:	AA 1-556
Origin:	Human
Source:	Escherichia coli (E. coli)
Protein Type:	Recombinant
Purification tag / Conjugate:	This TCP1 alpha/CCTA protein is labelled with His tag.
Application:	SDS-PAGE (SDS)

Product Details

Characteristics:	TCP1, 1-556aa, Human, His tag, E.coli
Purity:	> 80 % by SDS - PAGE

Target Details

Target:	TCP1 alpha/CCTA (TCP1)
Alternative Name:	TCP1 (TCP1 Products)
Background:	TCP1 is a molecular chaperone that is a member of the chaperonin containing TCP1 complex (CCT), also known as the TCP1 ring complex (TRiC). This protein is found in the cytosol as a subunit of a hetero-oligomeric chaperone. It has an important function in maintaining cellular homeostasis by assisting the folding of many proteins, including the cytoskeletal components actin and tubulin. Recombinant human TCP1 protein, fused to His-tag at N-terminus, was

Target Details

	expressed in E.coli and purified by using conventional chromatography. Synonyms: T-complex protein 1 subunit alpha, CCT-alpha, CCT1, CCT, TCP-1-alpha. NCBI no.: NP_110379
Molecular Weight:	62.5 kDa (576aa) confirmed by MALDI-TOF

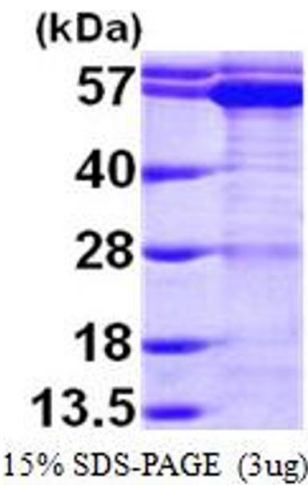
Application Details

Restrictions:	For Research Use only
---------------	-----------------------

Handling

Format:	Liquid
Concentration:	0.5 mg/ml (determined by Bradford assay)
Buffer:	Liquid. In 20 mM Tris-HCl Buffer (pH 8.0) containing 1 mM DTT, 0.1 mM PMSF,10% Glycerol
Storage:	4 °C

Images



SDS-PAGE

Image 1.