



[Go to Product page](#)

Datasheet for ABIN7529163

RAB1A Protein (AA 1-205) (His tag)

1 Image

Overview

Quantity:	100 µg
Target:	RAB1A
Protein Characteristics:	AA 1-205
Origin:	Human
Source:	Escherichia coli (E. coli)
Protein Type:	Recombinant
Purification tag / Conjugate:	This RAB1A protein is labelled with His tag.
Application:	SDS-PAGE (SDS)

Product Details

Characteristics:	RAB1A, 1-205aa, Human, His tag, E.coli
Purity:	> 95 % by SDS - PAGE

Target Details

Target:	RAB1A
Alternative Name:	RAB1A (RAB1A Products)
Background:	<p>RAB1A, also known as ras-related protein Rab-1A, is a member of ras-related superfamily. Rab proteins play an important role for, either in endocytosis or in biosynthetic protein transport. Rab1a protein controls vesicle traffic from the endoplasmic reticulum to the Golgi apparatus. Recombinant human RAB1A protein, fused to His-tag at N-terminus, was expressed in E.coli and purified by using conventional chromatography. Synonyms: Ras-related protein Rab-1A</p>

Target Details

isoform 1, DKFZp564B163, RAB1, YPT1. NCBI no.: NP_004152

Molecular Weight: 24.8 kDa (225aa), confirmed by MALDI-TOF

Pathways: [SARS-CoV-2 Protein Interactome](#)

Application Details

Restrictions: For Research Use only

Handling

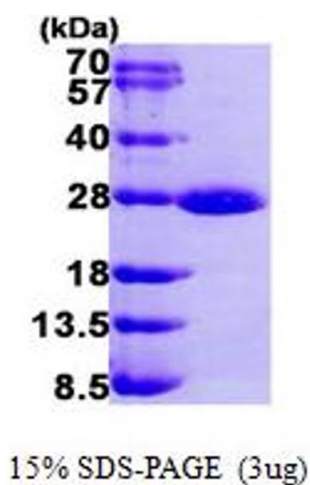
Format: Liquid

Concentration: 0.5 mg/ml (determined by Bradford assay)

Buffer: Liquid. 20mM Tris-HCl buffer (pH8.0) containing 20% glycerol, 0.1M NaCl, 1mM DTT

Storage: 4 °C

Images



SDS-PAGE

Image 1.