

Datasheet for ABIN7529166
RAB21 Protein (AA 18-222) (His tag)



[Go to Product page](#)

1 Image

Overview

Quantity:	100 µg
Target:	RAB21
Protein Characteristics:	AA 18-222
Origin:	Human
Source:	Escherichia coli (E. coli)
Protein Type:	Recombinant
Purification tag / Conjugate:	This RAB21 protein is labelled with His tag.
Application:	SDS-PAGE (SDS)

Product Details

Characteristics:	RAB21, 18-222aa, Human, His tag, E.coli
Purity:	> 90 % by SDS - PAGE

Target Details

Target:	RAB21
Alternative Name:	RAB21 (RAB21 Products)
Background:	Ras-related protein Rab-21, also known as RAB21, is a member of the Ras superfamily of small GTP-binding proteins. Rab21 is integrin-associated protein and positive regulators of integrin traffic. This protein associate with the cytoplasmic domains of alpha-integrin chains and their expression influences the endo/exocytic traffic of integrins. This function of Rab21 is dependent on its GTP/GDP cycle and proper membrane targeting. Recombinant human RAB21

Target Details

protein, fused to His-tag at N-terminus, was expressed in E.coli and purified by using conventional chromatography techniques. Synonyms: Ras-related protein Rab-21, NCBI no.: NP_055814

Molecular Weight: 27.1kDa (242aa), confirmed by MALDI-TOF

Application Details

Restrictions: For Research Use only

Handling

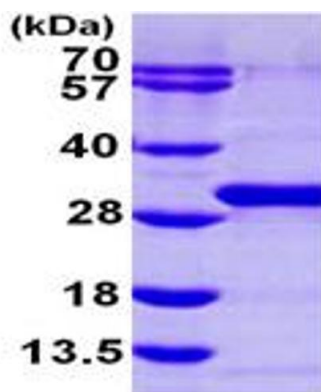
Format: Liquid

Concentration: 0.5mg/ml (determined by Bradford assay)

Buffer: Liquid. 20mM Tris-HCl buffer (pH8.0) containing 10% glycerol, 2mM DTT, 200mM NaCl, 1mM PMSF

Storage: 4 °C

Images



15% SDS-PAGE (3ug)

SDS-PAGE

Image 1.