

Datasheet for ABIN7529187

PSME2 Protein (AA 1-239) (His tag)[Go to Product page](#)**1** Image

Overview

Quantity:	100 µg
Target:	PSME2
Protein Characteristics:	AA 1-239
Origin:	Human
Source:	Escherichia coli (E. coli)
Protein Type:	Recombinant
Purification tag / Conjugate:	This PSME2 protein is labelled with His tag.
Application:	SDS-PAGE (SDS)

Product Details

Characteristics:	PSME2, 1-239aa, Human, His tag E.coli
Purity:	> 95 % by SDS - PAGE

Target Details

Target:	PSME2
Alternative Name:	PSME2 (PSME2 Products)
Background:	PSME2, also known as proteasome (prosome, macropain) activator subunit 2, is an IFN-gamma inducible proteasome activator required for presentation of certain major histocompatibility (MHC) class I antigens. Downregulation of PSME2 results in abnormal proteasome activation and has been implicated in the development of intimal hyperplasia (IH) in animal models. Recombinant human PSME2 protein, fused to His-tag at N-terminus, was

Target Details

	expressed in E.coli and purified by using conventional chromatography. Synonyms: Proteasome (prosome, macropain) activator subunit 2, PA28B, PA28beta, REGbeta. NCBI no.: AAH72025
Molecular Weight:	29.5 kDa (259aa), confirmed by MALDI-TOF
Pathways:	Mitotic G1-G1/S Phases , DNA Replication , Positive Regulation of Endopeptidase Activity , Synthesis of DNA

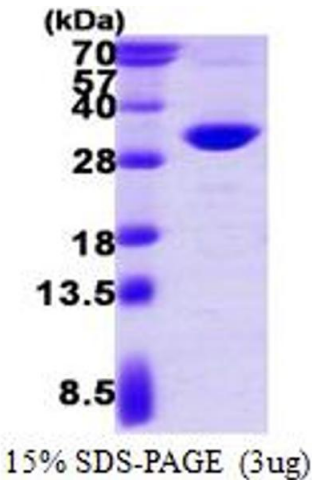
Application Details

Restrictions:	For Research Use only
---------------	-----------------------

Handling

Format:	Liquid
Concentration:	1.0 mg/ml (determined by Bradford assay)
Buffer:	Liquid. 20mM Tris-HCl buffer (pH8.0) containing 20% glycerol, 0.1M NaCl,1mM DTT, 0.1mM PMSF
Storage:	4 °C

Images



SDS-PAGE

Image 1.