

Datasheet for ABIN7529265

ICAM2 Protein (AA 22-223) (His tag)[Go to Product page](#)**1** Image

Overview

Quantity:	100 µg
Target:	ICAM2
Protein Characteristics:	AA 22-223
Origin:	Human
Source:	Escherichia coli (E. coli)
Protein Type:	Recombinant
Purification tag / Conjugate:	This ICAM2 protein is labelled with His tag.
Application:	SDS-PAGE (SDS)

Product Details

Sequence:	SDEKVFE VHVRPKKLAV EPKGSLEVNC STTCNQPEVG GLETSLDKIL LDEQAQWKHY LVSNISHDTV LQCHFTCSGK QESMNSNVSV YQPPRQVILT LQPTLVAVGK SFTIECRVPT VEPLDSLTLF LFRGNETLHY ETFGKAAPAP QEATATFNST ADREDGHRNF SCLAVLDLMS RGGNIFHKHS APKMLEIYEP VSDSQ
Purity:	> 90% by SDS-PAGE

Target Details

Target:	ICAM2
Alternative Name:	ICAM-2/CD102 (ICAM2 Products)
Background:	ICAM2 is a member of the intercellular adhesion molecule (ICAM) family. All ICAM proteins are type I transmembrane glycoproteins, contain 2-9 immunoglobulin-like C2-type domains, and

Target Details

bind to the leukocyte adhesion LFA-1 protein. This protein may play a role in lymphocyte recirculation by blocking LFA-1-dependent cell adhesion. It mediates adhesive interactions important for antigen-specific immune response, NK-cell mediated clearance, lymphocyte recirculation, and other cellular interactions important for immune response and surveillance. Several transcript variants encoding the same protein have been found for this gene. Recombinant human ICAM2 protein, fused to His-tag at N-terminus, was expressed in E. coli and purified by using conventional chromatography techniques.

Molecular Weight: 24.8 kDa (225aa) confirmed by MALDI-TOF

NCBI Accession: [NP_001093259](#)

UniProt: [P13598](#)

Application Details

Application Notes: Optimal working dilution should be determined by the investigator.

Restrictions: For Research Use only

Handling

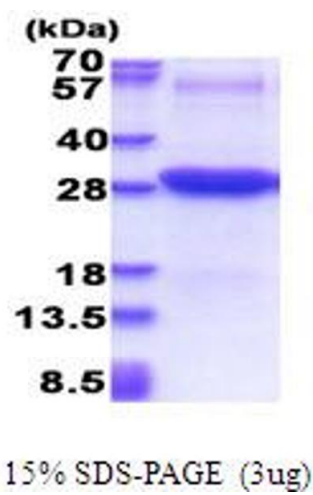
Format: Liquid

Concentration: 0.5 mg/mL

Buffer: Liquid. In 20 mM Tris-HCl buffer (pH 8.0) containing 0.15M NaCl, 10 % glycerol, 1 mM DTT

Storage: 4 °C,-20 °C,-80 °C

Storage Comment: Can be stored at +2°C to +8°C for 1 week. For long term storage, aliquot and store at -20°C to -80°C. Avoid repeated freezing and thawing cycles.



SDS-PAGE
Image 1.