



[Go to Product page](#)

Datasheet for ABIN7530378
anti-TKTL1 antibody (AA 220-340)

1 Image

Overview

Quantity:	20 µL
Target:	TKTL1
Binding Specificity:	AA 220-340
Reactivity:	Human
Host:	Rabbit
Clonality:	Polyclonal
Conjugate:	This TKTL1 antibody is un-conjugated
Application:	Western Blotting (WB)

Product Details

Purpose:	TKTL1 Rabbit pAb
Immunogen:	Recombinant fusion protein containing a sequence corresponding to amino acids 220-340 of human TKTL1 (NP_036385.3).
Sequence:	RGTPSIEDAE SWHAKPMPRE RADAIKILIE SGIQTSRNLDPQPPIEDSPE VNITDVRMTS PPDYRVGDKI ATRKACGLAL AKLGYANNRV VVLDGDTRYSTFSEIFNKEY PERFIECFMA E
Isotype:	IgG
Cross-Reactivity:	Human, Mouse, Rat
Characteristics:	Polyclonal Antibodies
Purification:	Affinity purification

Target Details

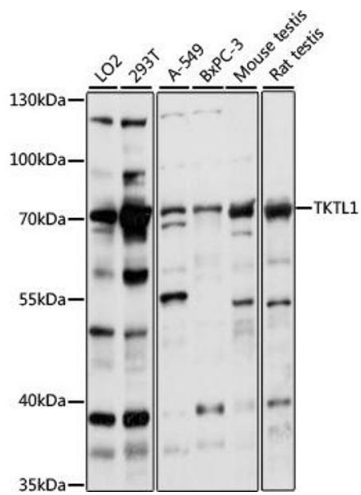
Target:	TKTL1
Alternative Name:	TKTL1 (TKTL1 Products)
Background:	The protein encoded by this gene is a transketolase that acts as a homodimer and catalyzes the conversion of sedoheptulose 7-phosphate and D-glyceraldehyde 3-phosphate to D-ribose 5-phosphate and D-xylulose 5-phosphate. This reaction links the pentose phosphate pathway with the glycolytic pathway. Variations in this gene may be the cause of Wernicke-Korsakoff syndrome. Three transcript variants encoding different isoforms have been found for this gene.,TKTL1,TKR,TKT2,Cancer,Tumor biomarkers,Signal Transduction,Endocrine & Metabolism,TKTL1
Molecular Weight:	59kDa/61kDa/65kDa
Gene ID:	8277
UniProt:	P51854

Application Details

Application Notes:	WB,1:200 - 1:2000
Restrictions:	For Research Use only

Handling

Format:	Liquid
Buffer:	PBS with 0.02 % sodium azide,50 % glycerol, pH 7.3.
Preservative:	Sodium azide
Precaution of Use:	This product contains Sodium azide: a POISONOUS AND HAZARDOUS SUBSTANCE which should be handled by trained staff only.
Storage:	-20 °C
Storage Comment:	Store at -20°C. Avoid freeze / thaw cycles.



Western Blotting

Image 1. Western blot analysis of extracts of various cell lines, using TKTL1 antibody at 1:1000 dilution. Secondary antibody: HRP Goat Anti-Rabbit IgG (H+L) (ABIN1684268 and ABIN3020597) at 1:10000 dilution. Lysates/proteins: 25 µg per lane. Blocking buffer: 3% nonfat dry milk in TBST. Detection: ECL Basic Kit (RM00020). Exposure time: 30s.