

Datasheet for ABIN7531848
anti-LRRK2 antibody (AA 2355-2527)



[Go to Product page](#)

6 Images

Overview

Quantity:	20 µL
Target:	LRRK2
Binding Specificity:	AA 2355-2527
Reactivity:	Human
Host:	Rabbit
Clonality:	Polyclonal
Conjugate:	This LRRK2 antibody is un-conjugated
Application:	Western Blotting (WB), Immunohistochemistry (IHC), Immunofluorescence (IF)

Product Details

Purpose:	LRRK2 Rabbit pAb
Immunogen:	Recombinant fusion protein containing a sequence corresponding to amino acids 2355-2527 of human LRRK2 (NP_940980.3).
Sequence:	ITVWVDTALY IAKQNSPVVE VWDKKTEKLC GLIDCVHFLR EVMVKENKES KHKMSYSGRV KTLCLQKNTA LWIGTGGGHI LLLDLSTRRL IRVIYNFCNS VRVMMTAQLG SLKNVMLVLG YNRKNTGEGTQ KQKEIQSCLT VWDINLPHEV QNLEKHIEVR KELAEMRRT SVE
Isotype:	IgG
Cross-Reactivity:	Human, Mouse, Rat
Characteristics:	Polyclonal Antibodies
Purification:	Affinity purification

Target Details

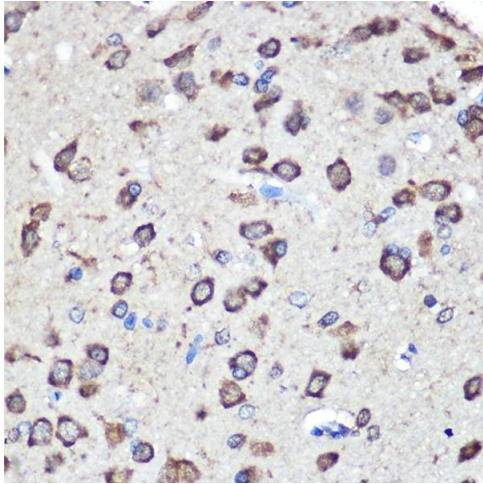
Target:	LRRK2
Alternative Name:	LRRK2 (LRRK2 Products)
Background:	<p>This gene is a member of the leucine-rich repeat kinase family and encodes a protein with an ankryin repeat region, a leucine-rich repeat (LRR) domain, a kinase domain, a DFG-like motif, a RAS domain, a GTPase domain, a MLK-like domain, and a WD40 domain. The protein is present largely in the cytoplasm but also associates with the mitochondrial outer membrane. Mutations in this gene have been associated with Parkinson disease-</p> <p>8.,LRRK2,AURA17,DARDARIN,PARK8,RIPK7,ROCO2,Signal Transduction,Kinase,Cell Biology & Developmental Biology,Autophagy,Neuroscience,Neurodegenerative Diseases,Dopamine Signaling in Parkinson's Disease,Neurodegenerative Diseases Markers,LRRK2</p>
Molecular Weight:	286kDa
Gene ID:	120892
UniProt:	Q5S007
Pathways:	Regulation of G-Protein Coupled Receptor Protein Signaling, Skeletal Muscle Fiber Development

Application Details

Application Notes:	WB,1:500 - 1:2000,IHC,1:50 - 1:200,IF,1:50 - 1:200
Restrictions:	For Research Use only

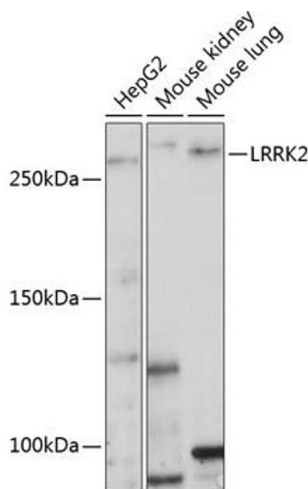
Handling

Format:	Liquid
Buffer:	PBS with 0.02 % sodium azide,50 % glycerol, pH 7.3.
Preservative:	Sodium azide
Precaution of Use:	This product contains Sodium azide: a POISONOUS AND HAZARDOUS SUBSTANCE which should be handled by trained staff only.
Storage:	-20 °C
Storage Comment:	Store at -20°C. Avoid freeze / thaw cycles.



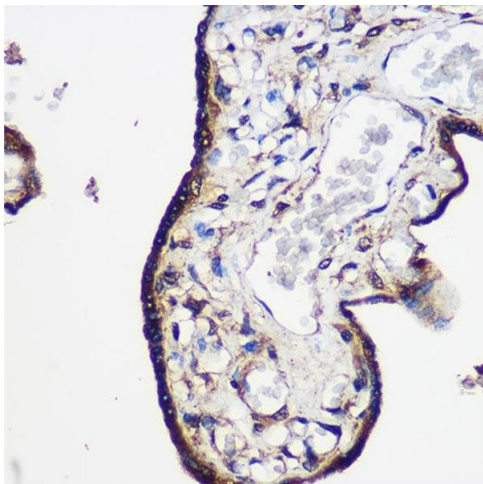
Immunohistochemistry

Image 1. Immunohistochemistry of paraffin-embedded Rat brain using LRRK2 Rabbit pAb at dilution of 1:100 (40x lens). Perform microwave antigen retrieval with 10 mM PBS buffer pH 7.2 before commencing with IHC staining protocol.



Western Blotting

Image 2. Western blot analysis of extracts of various cell lines, using LRRK2 Polyclonal Antibody at 1:1000 dilution. Secondary antibody: HRP Goat Anti-Rabbit IgG (H+L) (ABIN1684268 and ABIN3020597) at 1:10000 dilution. Lysates/proteins: 25 µg per lane. Blocking buffer: 3 % nonfat dry milk in TBST. Detection: ECL Basic Kit (RM00020). Exposure time: 3 min.



Immunohistochemistry

Image 3. Immunohistochemistry of paraffin-embedded Human placenta using LRRK2 Rabbit pAb at dilution of 1:100 (40x lens). Perform microwave antigen retrieval with 10 mM PBS buffer pH 7.2 before commencing with IHC staining protocol.

Please check the [product details page](#) for more images. Overall 6 images are available for ABIN7531848.