

Datasheet for ABIN753268
anti-Glycerol Kinase antibody (AA 21-120)[Go to Product page](#)

1 Image

Overview

Quantity:	100 µL
Target:	Glycerol Kinase (GK)
Binding Specificity:	AA 21-120
Reactivity:	Human
Host:	Rabbit
Clonality:	Polyclonal
Conjugate:	This Glycerol Kinase antibody is un-conjugated
Application:	ELISA, Immunohistochemistry (Paraffin-embedded Sections) (IHC (p)), Immunofluorescence (Cultured Cells) (IF (cc)), Immunofluorescence (Paraffin-embedded Sections) (IF (p)), Immunohistochemistry (Frozen Sections) (IHC (fro))

Product Details

Immunogen:	KLH conjugated synthetic peptide derived from human Glycerol kinase 1
Isotype:	IgG
Specificity:	This antibody will detect GK1 and GK2 due to high sequence similarity.
Cross-Reactivity:	Human
Predicted Reactivity:	Mouse,Rat,Cow,Pig,Horse,Rabbit
Purification:	Purified by Protein A.

Target Details

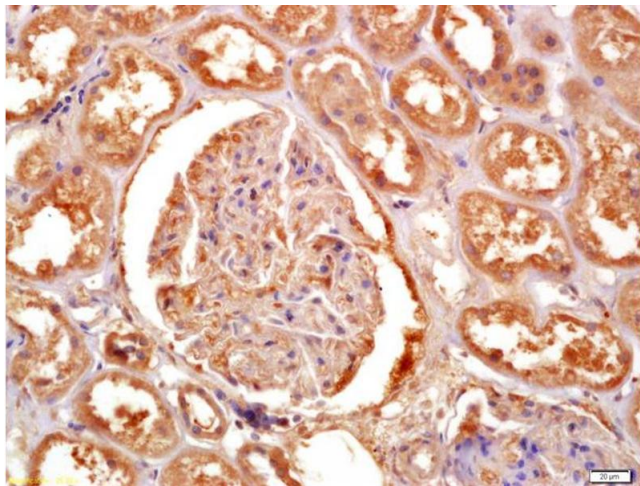
Target:	Glycerol Kinase (GK)
Alternative Name:	Glycerol kinase (GK Products)
Background:	<p>Synonyms: ATP glycerol 3 phosphotransferase, GK, GK1, GK2, GKD, Glycerokinase, Glycerol kinase, Glycerol kinase deficiency, ATP:glycerol 3-phosphotransferase, GLPK_HUMAN.</p> <p>Background: Glycerol kinase catalyzes the formation of glycerol 3 phosphate from ATP and glycerol. Dihydroxyacetone and L glyceraldehyde can also act as acceptors, UTP and, in the case of the yeast enzyme, ITP and GTP can act as donors. It provides a way for glycerol derived from fats or glycerides to enter the glycolytic pathway.</p>
Gene ID:	2710, 2712

Application Details

Application Notes:	ELISA 1:500-1000 IHC-P 1:200-400 IHC-F 1:100-500 IF(IHC-P) 1:50-200 IF(IHC-F) 1:50-200 IF(ICC) 1:50-200
Restrictions:	For Research Use only

Handling

Format:	Liquid
Concentration:	1 µg/µL
Buffer:	0.01M TBS(pH 7.4) with 1 % BSA, 0.02 % Proclin300 and 50 % Glycerol.
Preservative:	ProClin
Precaution of Use:	This product contains ProClin: a POISONOUS AND HAZARDOUS SUBSTANCE, which should be handled by trained staff only.
Storage:	4 °C,-20 °C
Storage Comment:	Shipped at 4°C. Store at -20°C for one year. Avoid repeated freeze/thaw cycles.
Expiry Date:	12 months



Immunohistochemistry

Image 1. Formalin-fixed and paraffin embedded human kidney labeled with Anti-Glycerol kinase Polyclonal Antibody, Unconjugated (ABIN753268) at 1:200 followed by conjugation to the secondary antibody and DAB staining