



Datasheet for ABIN7533426
anti-TRA2B antibody



[Go to Product page](#)

1 Image

Overview

| | |
|--------------|---|
| Quantity: | 100 µL |
| Target: | TRA2B |
| Reactivity: | Human |
| Host: | Rabbit |
| Clonality: | Polyclonal |
| Conjugate: | This TRA2B antibody is un-conjugated |
| Application: | Western Blotting (WB), Immunohistochemistry (IHC) |

Product Details

| | |
|-------------------|-----------------------|
| Immunogen: | Synthetic Peptide |
| Cross-Reactivity: | Human, Mouse (Murine) |

Target Details

| | |
|-------------------|--|
| Target: | TRA2B |
| Alternative Name: | TRA2B (TRA2B Products) |
| Molecular Weight: | 34kDa |
| Gene ID: | 6434 |
| UniProt: | P62995 |

Application Details

Application Notes: Optimal working dilution should be determined by the investigator.

Comment: HIGH QUALITY

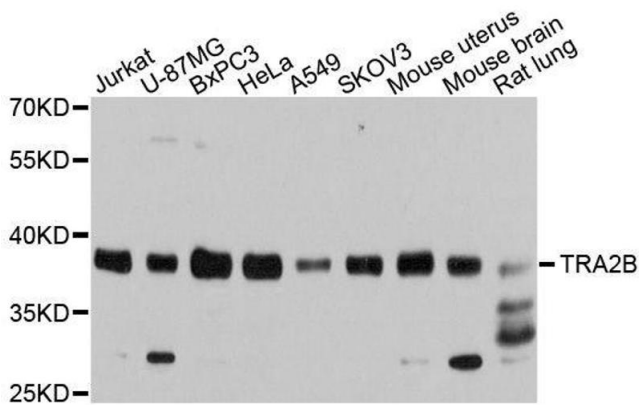
Restrictions: For Research Use only

Handling

Format: Liquid

Storage: -20 °C

Images



Western Blotting

Image 1. Western blot analysis of extracts of various cell lines, using TRA2B antibody.