

Datasheet for ABIN753418  
**anti-CBL antibody (pTyr700)**



[Go to Product page](#)

1 Image

## Overview

Quantity:	100 µL
Target:	CBL
Binding Specificity:	pTyr700
Reactivity:	Human, Rat
Host:	Rabbit
Clonality:	Polyclonal
Conjugate:	This CBL antibody is un-conjugated
Application:	ELISA, Immunofluorescence (Paraffin-embedded Sections) (IF (p)), Immunofluorescence (Cultured Cells) (IF (cc)), Immunohistochemistry (Paraffin-embedded Sections) (IHC (p)), Immunocytochemistry (ICC), Immunohistochemistry (Frozen Sections) (IHC (fro))

## Product Details

Immunogen:	KLH conjugated synthetic phosphopeptide derived from human C CBL around the phosphorylation site of Tyr700
Isotype:	IgG
Cross-Reactivity:	Human, Rat
Predicted Reactivity:	Mouse,Dog,Cow,Pig,Horse
Purification:	Purified by Protein A.

## Target Details

Target:	CBL
---------	-----

## Target Details

Alternative Name:	CBL2 ( <a href="#">CBL Products</a> )
Background:	<p>Synonyms: C CBL Tyr700, CBL2 Tyr700, CBL2 Y700, p-CBL2 Tyr700, p-CBL2 Y700, C CBL, Cas-Br-M murine ecotropic retroviral transforming sequence, Casitas B lineage lymphoma proto oncogene, CBL 2,E3 ubiquitin protein ligase CBL, Oncogene CBL2, Proto oncogene c CBL, RGD1561386, RING finger protein 55, RNF55v Signal transduction protein CBL, 4732447J05Rik, CBL_HUMAN.</p> <p>Background: This gene is a proto-oncogene that encodes a RING finger E3 ubiquitin ligase. The encoded protein is one of the enzymes required for targeting substrates for degradation by the proteasome. This protein mediates the transfer of ubiquitin from ubiquitin conjugating enzymes (E2) to specific substrates. This protein also contains an N-terminal phosphotyrosine binding domain that allows it to interact with numerous tyrosine-phosphorylated substrates and target them for proteasome degradation. As such it functions as a negative regulator of many signal transduction pathways. This gene has been found to be mutated or translocated in many cancers including acute myeloid leukaemia. Mutations in this gene are also the cause of Noonan syndrome-like disorder. [provided by RefSeq, Mar 2012]</p>
Gene ID:	867
Pathways:	<a href="#">TCR Signaling</a> , <a href="#">Interferon-gamma Pathway</a> , <a href="#">EGFR Signaling Pathway</a> , <a href="#">EGFR Downregulation</a> , <a href="#">VEGFR1 Specific Signals</a>

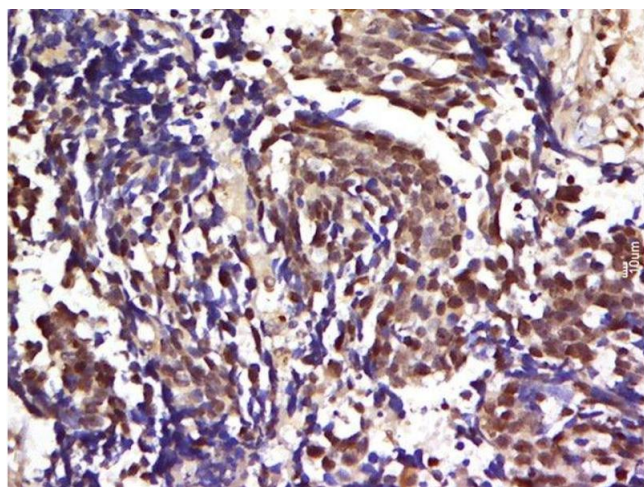
## Application Details

Application Notes:	ELISA 1:500-1000 IHC-P 1:200-400 IHC-F 1:100-500 IF(IHC-P) 1:50-200 IF(IHC-F) 1:50-200 IF(ICC) 1:50-200 ICC 1:100-500
Restrictions:	For Research Use only
Handling	
Format:	Liquid
Concentration:	1 µg/µL
Buffer:	0.01M TBS( pH 7.4) with 1 % BSA, 0.02 % Proclin300 and 50 % Glycerol.

## Handling

Preservative:	ProClin
Precaution of Use:	This product contains ProClin: a POISONOUS AND HAZARDOUS SUBSTANCE, which should be handled by trained staff only.
Storage:	4 °C,-20 °C
Storage Comment:	Shipped at 4°C. Store at -20°C for one year. Avoid repeated freeze/thaw cycles.
Expiry Date:	12 months

## Images



### Immunohistochemistry (Paraffin-embedded Sections)

**Image 1.** Paraformaldehyde-fixed, paraffin embedded human lung carcinoma tissue, Antigen retrieval by boiling in sodium citrate buffer(pH6) for 15min, Block endogenous peroxidase by 3% hydrogen peroxide for 30 minutes, Blocking buffer (normal goat serum) at 37°C for 20min, Antibody incubation with Rabbit Anti-CBL2 (Tyr700) Polyclonal Antibody, Unconjugated at 1:500 overnight at 4°C, followed by a conjugated secondary and DAB staining