

Datasheet for ABIN7536622
DVL1 Protein (AA 1-444) (GST tag)



[Go to Product page](#)

1 Image

Overview

Quantity:	2 µg
Target:	DVL1
Protein Characteristics:	AA 1-444
Origin:	Human
Source:	Wheat germ
Protein Type:	Recombinant
Purification tag / Conjugate:	This DVL1 protein is labelled with GST tag.
Application:	Western Blotting (WB), ELISA, Antibody Array (AA), Affinity Purification (AP)

Product Details

Purpose:	DVL1 (Human) Recombinant Protein (P01)
Sequence:	MAETKIIYHM DEEETPYLVK LPVAPERVTL ADFKNVLSNR PVHAYKFFFK SMDQDFGVVK EEIFDDNAKL PCFN GRV VSW LVLAEGAHS D AGSQG TDSHT DLPPPLERTG GIGDSRPPSF HPNVASSRDG MDNETGTESM VSHRRERARR RNREEAARTN GHPRGD RRRD VGLPPDSAST ALSSELESSS FVDSDE DGST SRLSSSTEQS TSSRLTRKYA SLLKHGFLR HTV NKITFSE QCY YVFGDLC SNL ATLN LNS GSSGTSDQDT LAPLHPAAP WPLGQGY PYQ YPGPPPCFPP AYQDPGFSYG SGSTGSQQSE GSKSSGSTRS SRRAPGREKE RRAAGAGGSG SESDHTAPSG VGSSWRERPA GQLSRGSSPR SQASATAPGL PPPHPTTKAY TVVGGPPGGP PVRELA AVPP ELTGSRQSFQ KAMGNPCEFF VDIM
Characteristics:	Human DVL1 full-length ORF (NP_877580.1, 1 a.a. - 444 a.a.) recombinant protein with GST-tag at N-terminal.

Product Details

Purification: in vitro wheat germ expression system

Target Details

Target: DVL1

Alternative Name: DVL1 ([DVL1 Products](#))

Background: Gene: dishevelled, dsh homolog 1 (Drosophila)
Synonyms: DVL, MGC54245

Gene ID: 1855

NCBI Accession: [NM_182779](#)

Pathways: [WNT Signaling](#), [Synaptic Membrane](#), [Skeletal Muscle Fiber Development](#)

Application Details

Application Notes: Optimal working dilution should be determined by the investigator.

Restrictions: For Research Use only

Handling

Buffer: 50 mM Tris-HCl, 10 mM reduced Glutathione, pH =8.0 in the elution buffer.

Handling Advice: Aliquot to avoid repeated freezing and thawing.

Storage: -80 °C

Storage Comment: Best use within three months from the date of receipt of this protein.

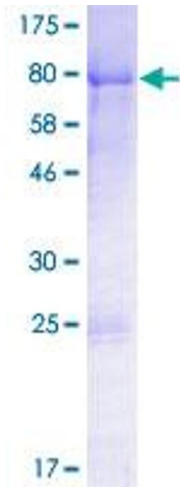


Image 1.