

Datasheet for ABIN7536623

MC1 Receptor Protein (AA 1-317) (GST tag)



[Go to Product page](#)

1 Image

Overview

Quantity:	2 µg
Target:	MC1 Receptor (MC1R)
Protein Characteristics:	AA 1-317
Origin:	Human
Source:	Wheat germ
Protein Type:	Recombinant
Purification tag / Conjugate:	This MC1 Receptor protein is labelled with GST tag.
Application:	ELISA, Western Blotting (WB), Affinity Purification (AP), Antibody Array (AA)

Product Details

Purpose:	MC1R (Human) Recombinant Protein (P01)
Sequence:	MAVQGSQRRL LGSLNSTPTA IPQLGLAANQ TGARCLEVSI SDGLFSLGL VSLVENALVV ATIAKNRNLH SPMYCFICCL ALSDLLVSGS NVLETAVILL LEAGALVARA AVLQQLDNVI DVITCSSMLS SLCFLGAIIV DRYISIFYAL RYHSTVTLPR ARRVAIIWV ASVVFSTLFI AYYDHSVAVLL CLVVFFLAML VLMAVLYVHM LARACQHAQG IARLHKRQRP VHQGFGKGA VTLTILLGIF FLCWGPFFLH LTLIVLCPEH PTCGCIFKNF NLFLALIICN AIIDPLIYAF HSQELRRTLK EVLTCSSW
Characteristics:	Human MC1R full-length ORF (NP_002377.3, 1 a.a. - 317 a.a.) recombinant protein with GST tag at N-terminal.
Purification:	in vitro wheat germ expression system

Target Details

Target:	MC1 Receptor (MC1R)
Alternative Name:	MC1R (MC1R Products)
Background:	Full Gene Name: melanocortin 1 receptor (alpha melanocyte stimulating hormone receptor) Synonyms: MGC14337,MSH-R,SHEP2
Gene ID:	4157
NCBI Accession:	NM_002386
Pathways:	cAMP Metabolic Process , Feeding Behaviour

Application Details

Application Notes:	Optimal working dilution should be determined by the investigator.
Comment:	Preparation method: in vitro, wheat germ expression system Product Quality tested by: 12.5% SDS-PAGE Stained with Coomassie Blue
Restrictions:	For Research Use only

Handling

Buffer:	50 mM Tris-HCl, 10 mM reduced Glutathione, pH =8.0 in the elution buffer.
Handling Advice:	Aliquot to avoid repeated freezing and thawing.
Storage:	-80 °C
Storage Comment:	Best use within three months from the date of receipt of this protein.

Images

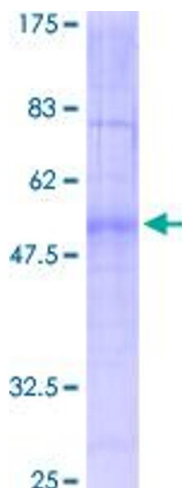


Image 1.