

Datasheet for ABIN7536624
RPL7 Protein (AA 1-248) (GST tag)



[Go to Product page](#)

1 Image

Overview

Quantity:	2 µg
Target:	RPL7
Protein Characteristics:	AA 1-248
Origin:	Human
Source:	Wheat germ
Protein Type:	Recombinant
Purification tag / Conjugate:	This RPL7 protein is labelled with GST tag.
Application:	ELISA, Western Blotting (WB), Affinity Purification (AP), Antibody Array (AA)

Product Details

Purpose:	RPL7 (Human) Recombinant Protein (P01)
Sequence:	MEGVEEKKKE VPAVPETLKK KRRNFAELKI KRLRKKFAQK MLRKARRKLI YEKAKHYHKE YRQMYRTEIR MARMARKAGN FYVPAEPKLA FVIRIRGING VSPKVRKVLQ LLRLRQIFNG TFVKLNKASI NMLRIVEPYI AWGYPNLKSV NELIYKRGYK KINKKRIALT DNALIARSLG KYGIICMEDL IHEIYTVGKR FKEANNFLWP FKLSSPRGGM KKKTTTHFVEG GDAGNREDQI NRLIRRMN
Characteristics:	Human RPL7 full-length ORF (AAH09599.1, 1 a.a. - 248 a.a.) recombinant protein with GST-tag at N-terminal.
Purification:	in vitro wheat germ expression system

Target Details

Target:	RPL7
Alternative Name:	RPL7 (RPL7 Products)
Background:	Full Gene Name: ribosomal protein L7 Synonyms: MGC117326,humL7-1
Gene ID:	6129

Application Details

Application Notes:	Optimal working dilution should be determined by the investigator.
Comment:	Preparation method: in vitro, wheat germ expression system Product Quality tested by: 12.5% SDS-PAGE Stained with Coomassie Blue.
Restrictions:	For Research Use only

Handling

Buffer:	50 mM Tris-HCl, 10 mM reduced Glutathione, pH =8.0 in the elution buffer.
Handling Advice:	Aliquot to avoid repeated freezing and thawing.
Storage:	-80 °C
Storage Comment:	Best use within three months from the date of receipt of this protein.

Images

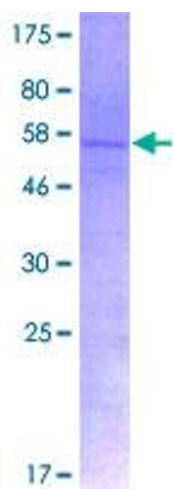


Image 1.